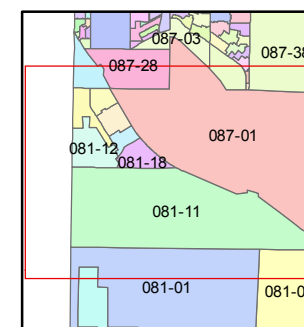
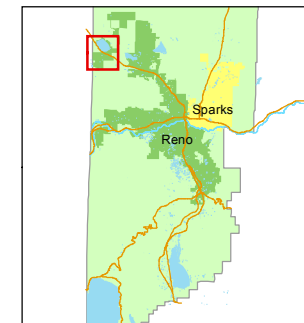


1 inch = 1,320 feet



created by: **KSB 10/14/2011**

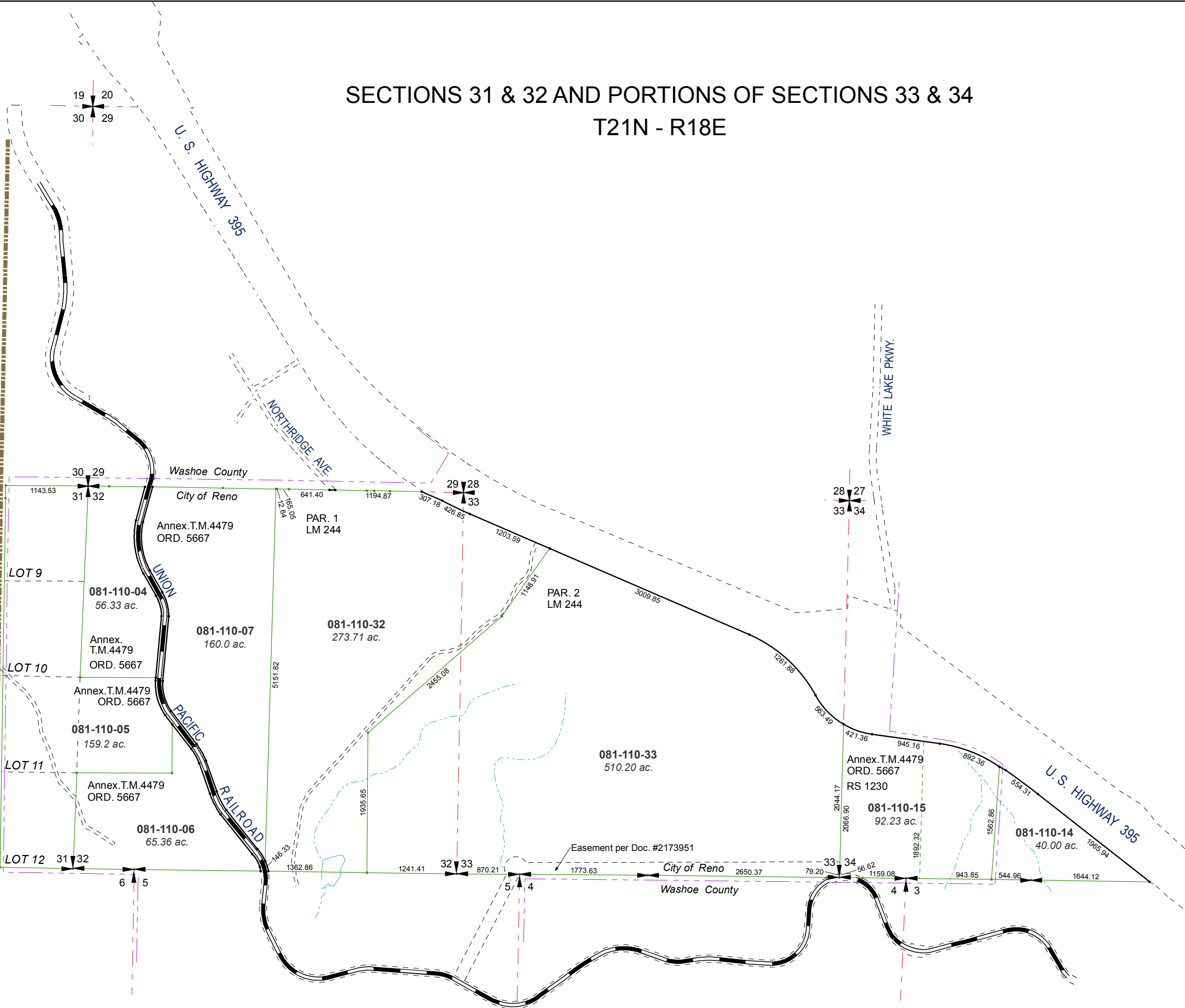
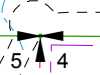
last updated: **CFB 5/11/15 KSB 11/06/15**

area previously shown on map(s)

NOTE: This map was prepared for the use of the Washoe County Assessor for assessment and illustrative purposes only. It does not represent a survey of the premises. No liability is assumed as to the sufficiency or accuracy of the data delineated hereon.

SECTIONS 31 & 32 AND PORTIONS OF SECTIONS 33 & 34 T21N - R18E

CALIFORNIA



T21N - R18E

T20N - R18E

U. S. HIGHWAY 395

NORTH RIDGE AVE

WHITE LAKE PKWY.

UNION PACIFIC RAILROAD

U. S. HIGHWAY 395

LOT 9

LOT 10

LOT 11

LOT 12

081-110-04
56.33 ac.

081-110-05
159.2 ac.

081-110-06
65.36 ac.

081-110-07
160.0 ac.

081-110-32
273.71 ac.

081-110-33
510.20 ac.

081-110-15
92.23 ac.

081-110-14
40.00 ac.

Annex. T.M. 4479
ORD. 5667

Annex. T.M. 4479
ORD. 5667

Annex. T.M. 4479
ORD. 5667

PAR. 1
LM 244

PAR. 2
LM 244

Annex. T.M. 4479
ORD. 5667
RS 1230

Easement per Doc. #2173951

City of Reno

Washoe County

Washoe County

City of Reno

City of Reno

Washoe County