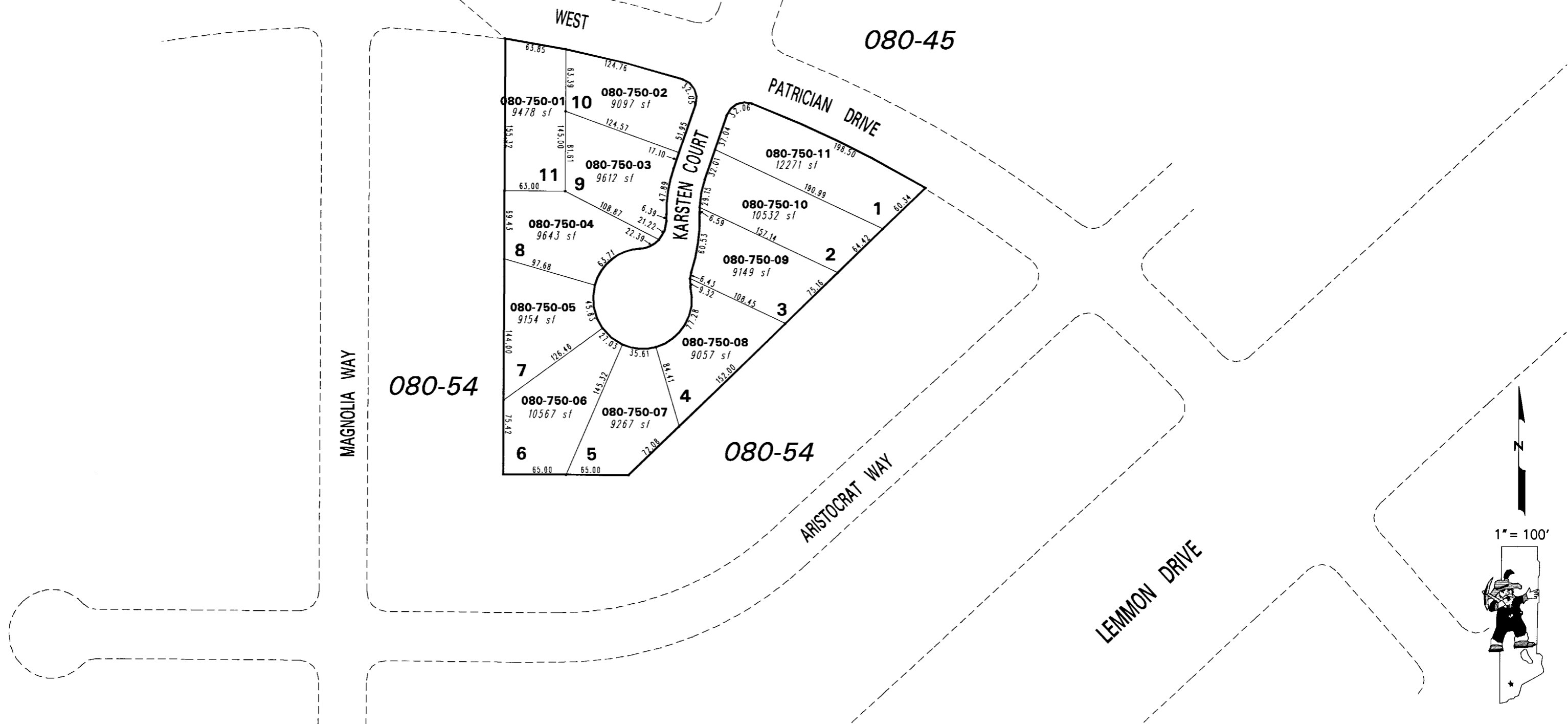


GPS #446
N 14,912,940.610
E 2,269,302.526
S50-15-40E
3371.97'

(#3975)
VALLEY VILLAGE SUBDIVISION #6

PORTION OF THE N 1/2 SECTION 34
T21N - R19E



NOTE: This map is prepared for the use of the Washoe County Assessor for assessment and illustrative purposes only. It does not represent a survey of the premises. No liability is assumed as to the sufficiency or the accuracy of the data delineated hereon.

Office of Washoe County Assessor, Nevada - Robert W. McGowan

This area previously shown on 080-54

NOTE: Areas of parcels which are less than 2 acres are shown in square feet.

Drawn by HCS 8/2/01
Revised HCS 8/7/02 TWT 4/3/06