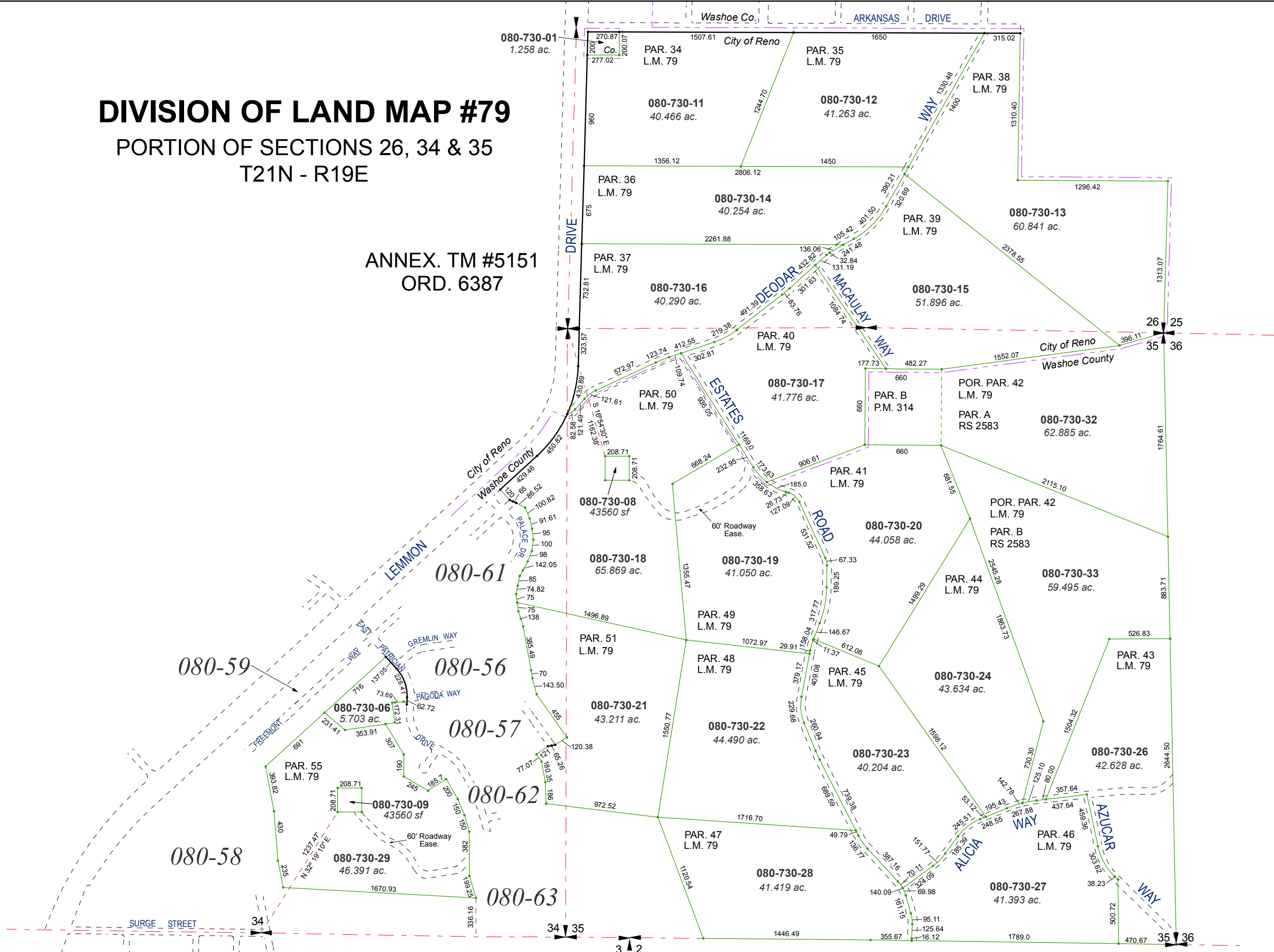


DIVISION OF LAND MAP #79

PORTION OF SECTIONS 26, 34 & 35 T21N - R19E

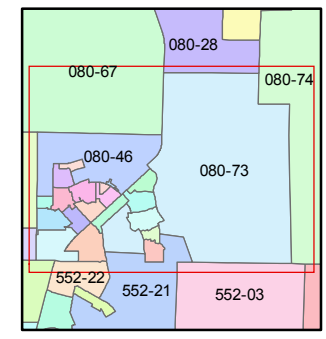
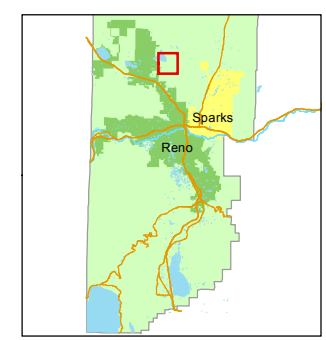
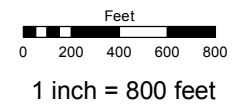
ANNEX. TM #5151
ORD. 6387



Assessor's Map Number
080-73

STATE OF NEVADA
WASHOE COUNTY
ASSESSOR'S OFFICE
Michael E. Clark, Assessor

1001 East Ninth Street
Building D
Reno, Nevada 89512
(775) 328-2231



created by: TWT 9/28/2009
last updated: TWT 3/24/11 KSB 4/15/16
area previously shown on map(s)
080-67

NOTE: This map was prepared for the use of the Washoe County Assessor for assessment and illustrative purposes only. It does not represent a survey of the premises. No liability is assumed as to the sufficiency or accuracy of the data delineated hereon.