

# MAP OF DIVISION INTO LARGE PARCELS #79

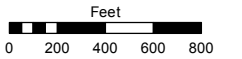
POR. SECTIONS 14, 22 & 23, T21N - R19E

Assessor's Map Number

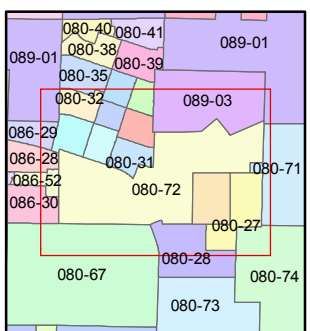
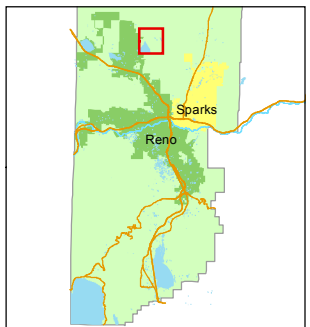
**080-72**

STATE OF NEVADA  
**WASHOE COUNTY**  
ASSESSOR'S OFFICE  
Michael E. Clark, Assessor

1001 East Ninth Street  
Building D  
Reno, Nevada 89512  
(775) 328-2231



1 inch = 800 feet



created by: CFB 12/19/2011

last updated: CFB 7/08/15 KSB 4/15/16

area previously shown on map(s)

080-67

NOTE: This map was prepared for the use of the Washoe County Assessor for assessment and illustrative purposes only. It does not represent a survey of the premises. No liability is assumed as to the sufficiency or accuracy of the data delineated hereon.

