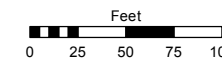
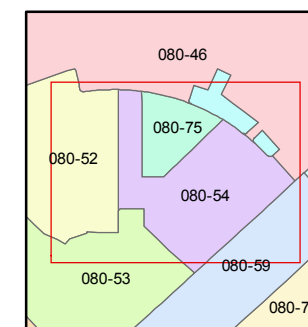
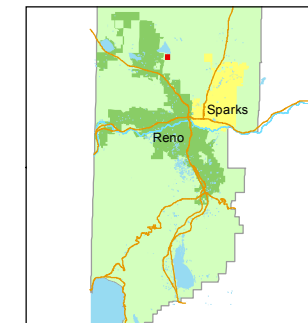


STATE OF NEVADA
WASHOE COUNTY
ASSESSOR'S OFFICE
Joshua G. Wilson, Assessor

1001 East Ninth Street
Building D
Reno, Nevada 89512
(775) 328-2231



1 inch = 100 feet



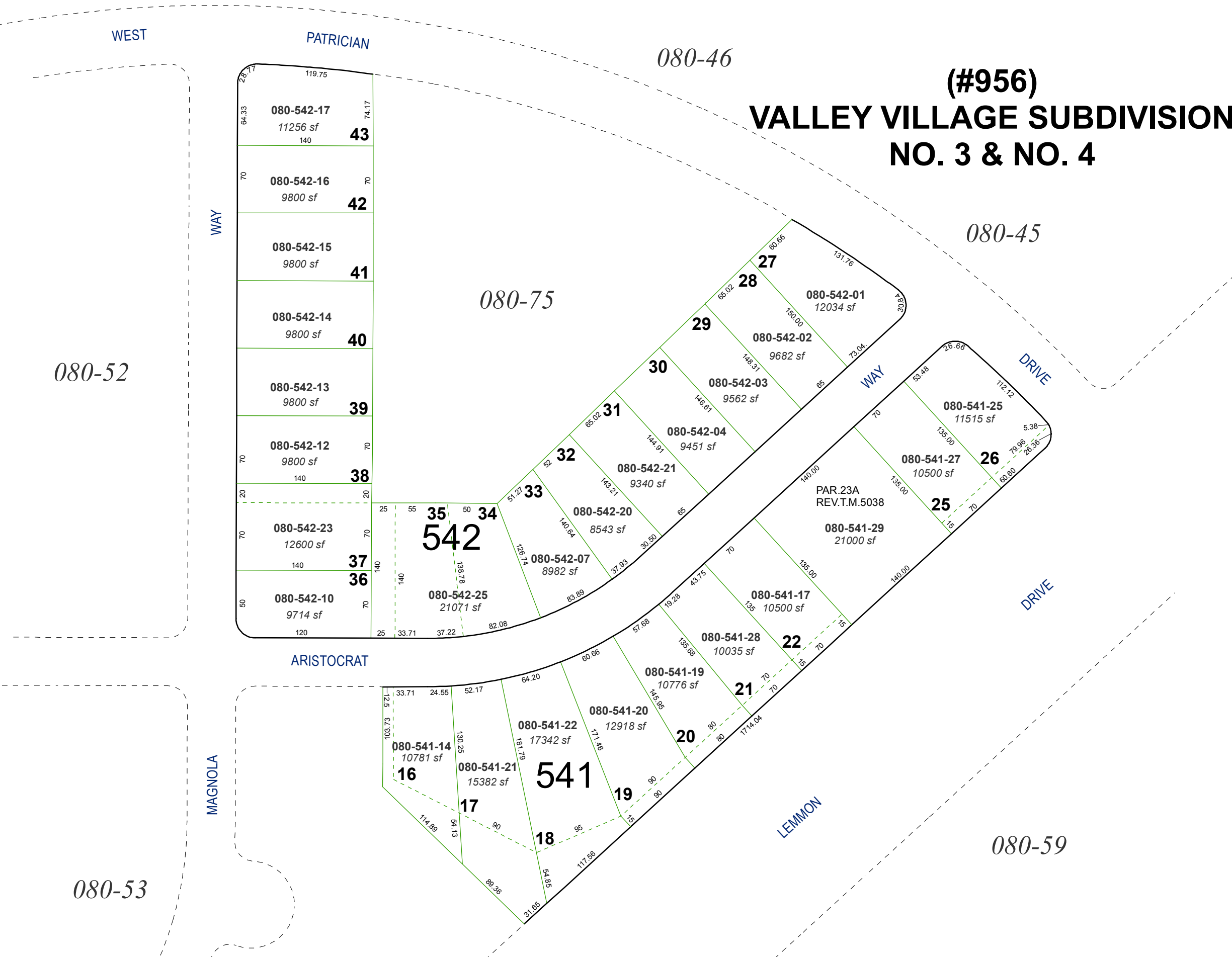
created by: CFB 06/21/2013

last updated: _____

area previously shown on map(s)

NOTE: This map was prepared for the use of the Washoe County Assessor for assessment and illustrative purposes only. It does not represent a survey of the premises. No liability is assumed as to the sufficiency or accuracy of the data delineated herein.

(#956) VALLEY VILLAGE SUBDIVISION NO. 3 & NO. 4



WEST

PATRICIAN

080-46

080-45

080-52

WAY

080-75

WAY

DRIVE

ARISTOCRAT

MAGNOLA

LEMMON

080-59

080-53

Lot #	Assessor's Map #	Area (sf)
16	080-541-14	10781
17	080-541-21	15382
18	080-541-22	17342
19	080-541-20	12918
20	080-541-20	10776
21	080-541-19	10776
22	080-541-17	10500
23	080-541-28	10035
24	080-541-20	12918
25	080-541-29	21000
26	080-541-27	10500
27	080-541-25	11515
28	080-542-03	9562
29	080-542-04	9451
30	080-542-21	9340
31	080-542-07	8982
32	080-542-20	8543
33	080-542-07	8982
34	080-542-25	21071
35	080-542-23	12600
36	080-542-10	9714
37	080-542-23	12600
38	080-542-12	9800
39	080-542-13	9800
40	080-542-14	9800
41	080-542-15	9800
42	080-542-16	9800
43	080-542-17	11256

PAR.23A
REV.T.M.5038