

PORTION OF THE N 1/2 SECTION 34
T21N - R19E

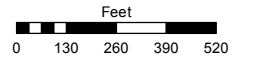
**DIVISION OF
LAND MAP #79**

Assessor's Map Number

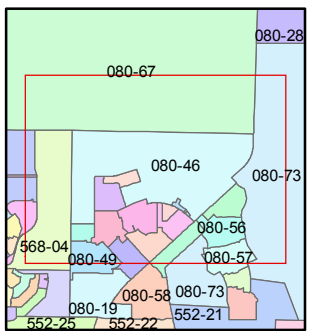
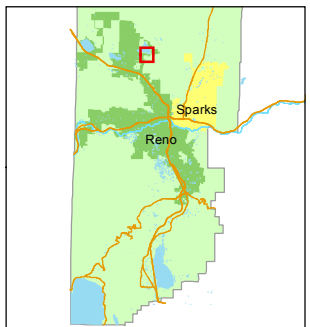
080-46

STATE OF NEVADA
WASHOE COUNTY
ASSESSOR'S OFFICE
Michael E. Clark, Assessor

1001 East Ninth Street
Building D
Reno, Nevada 89512
(775) 328-2231



1 inch = 500 feet



created by: EMG 10/09/2014

last updated: KSB 4/15/16 JMO 10/19/16

area previously shown on map(s)

NOTE: This map was prepared for the use of the Washoe County Assessor for assessment and illustrative purposes only. It does not represent a survey of the premises. No liability is assumed as to the sufficiency or accuracy of the data delineated hereon.

