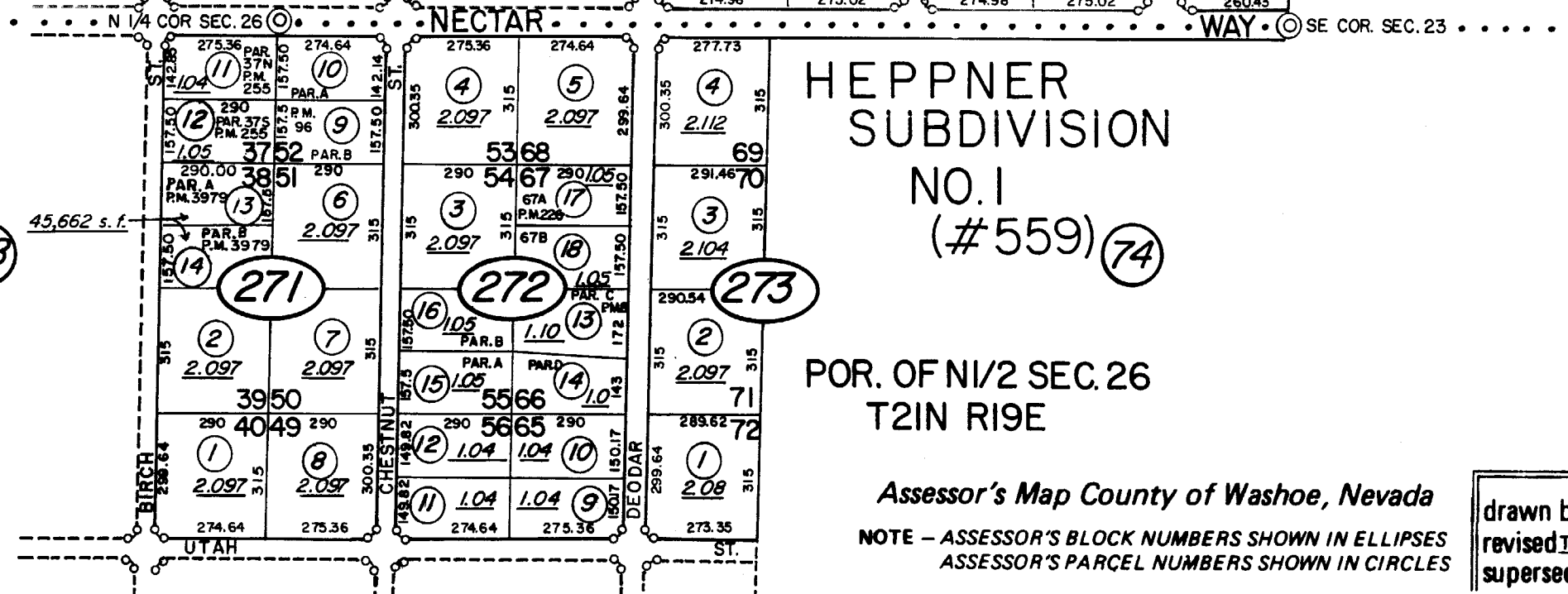


(#560)
HEPPNER
SUBDIVISION
NO.2

POR. OF S1/2 SEC. 23
T2IN R19E



HEPPNER
SUBDIVISION
NO.1
(#559) (74)

POR. OF N1/2 SEC. 26
T2IN R19E

Assessor's Map County of Washoe, Nevada

NOTE - ASSESSOR'S BLOCK NUMBERS SHOWN IN ELLIPSES
ASSESSOR'S PARCEL NUMBERS SHOWN IN CIRCLES

drawn by s
revised TWT 4/4/03, 5/21/09
superseded

NOTE: This Map is prepared for the use of the Washoe County Assessor for Assessment and illustrative purposes only, it does not represent survey of the premises. No liability is assumed as to the sufficiency or accuracy of the data delineated hereon.

1" = 400'