

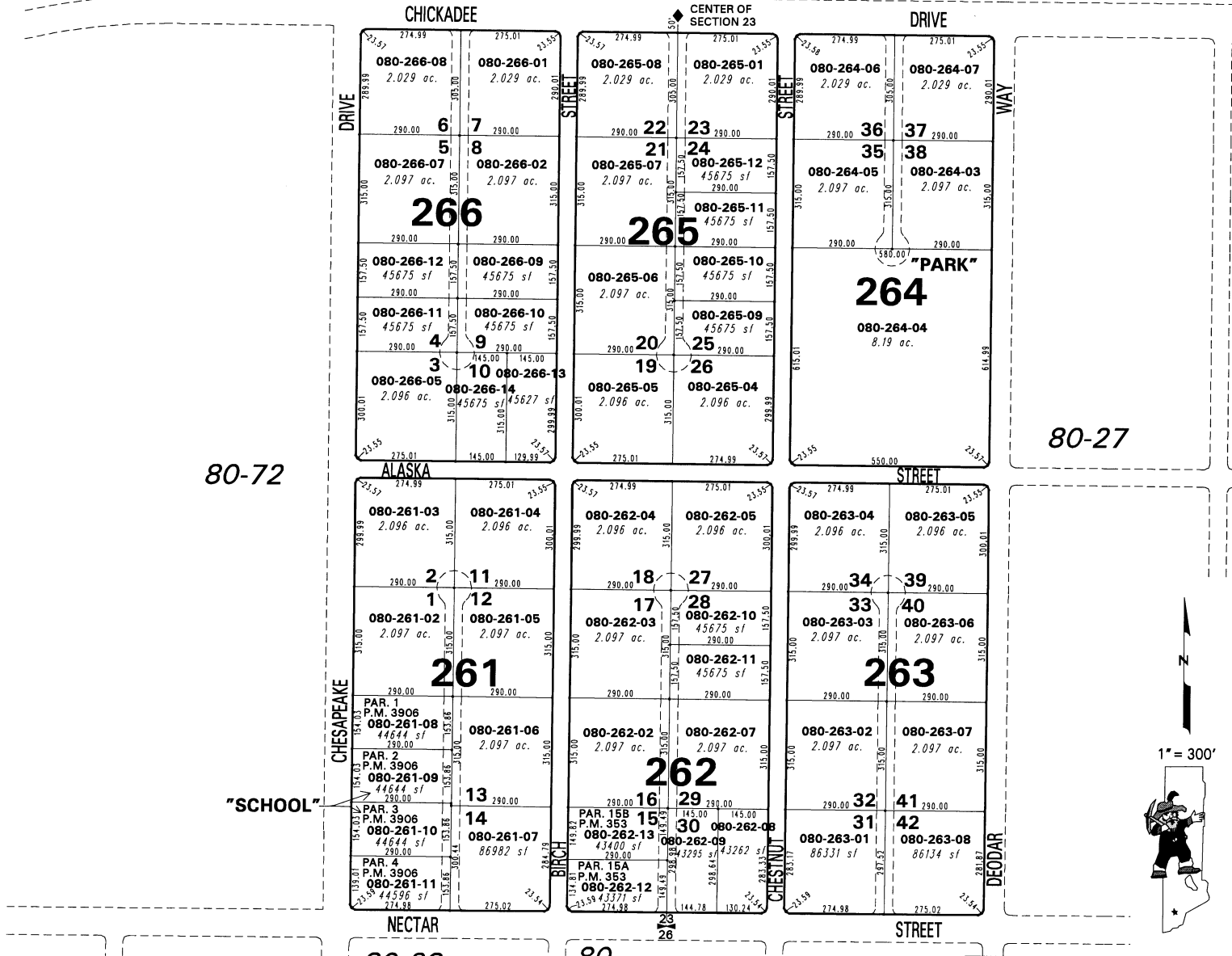
80-72

(#560) HEPPNER SUBDIVISION NO. 2

080-26

PORTION OF S 1/2 OF SECTION 23, T21N - R19E

80-72



NOTE: This map is prepared for the use of the Washoe County Assessor for assessment and illustrative purposes only. It does not represent a survey of the premises. No liability is assumed as to the sufficiency or the accuracy of the data delineated hereon.

Office of Washoe County Assessor, Nevada - Robert W. McGowan

This area previously shown on _____
NOTE: Areas of parcels which are less than 2 acres are shown in square feet.

Drawn by TWT 09/09/02
Revised by _____