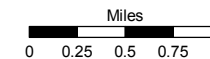


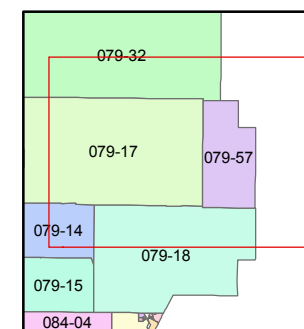
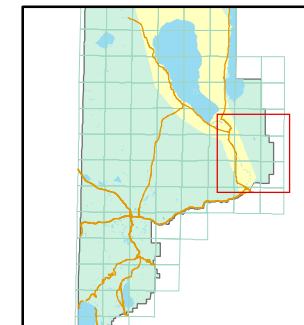
STATE OF NEVADA  
**WASHOE COUNTY**  
**ASSESSOR'S OFFICE**

Joshua G. Wilson, Assessor

1001 East Ninth Street  
Building D  
Reno, Nevada 89512  
(775) 328-2231



1 inch = 5,280 feet



created by: TWT 2/17/2011

last updated: \_\_\_\_\_

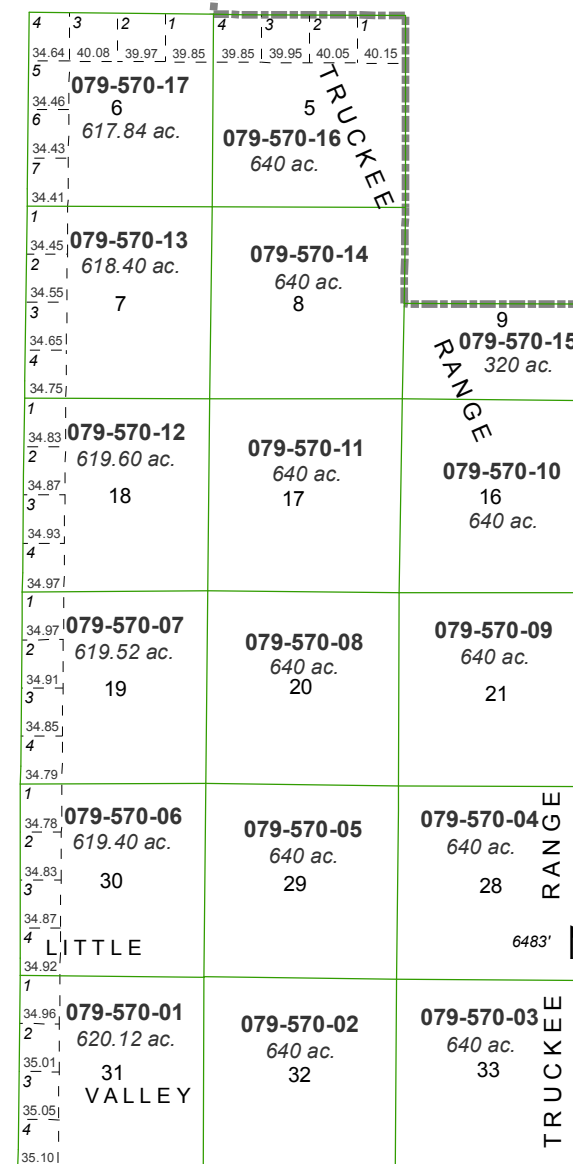
area previously shown on map(s)

079-17

NOTE: This map was prepared for the use of the Washoe County Assessor for assessment and illustrative purposes only. It does not represent a survey of the premises. No liability is assumed as to the sufficiency or accuracy of the data delineated hereon.

**RANGE 25 EAST**

**TOWNSHIP 22 NORTH**



**CHURCHILL COUNTY**