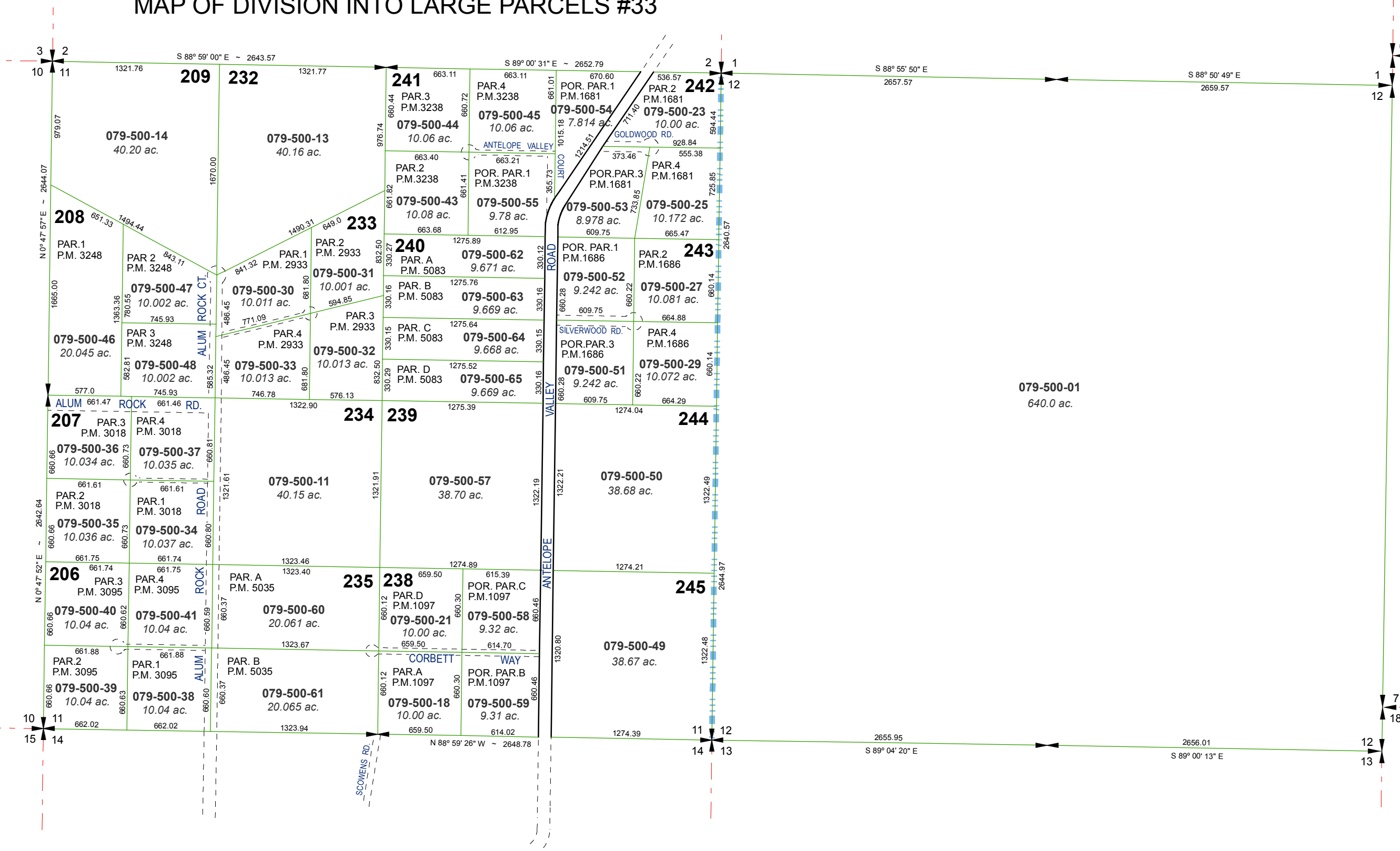


SECTIONS 11 & 12, T22N - R19E

RED ROCK ESTATES

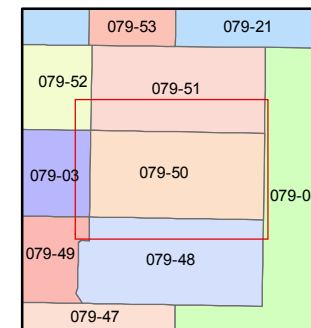
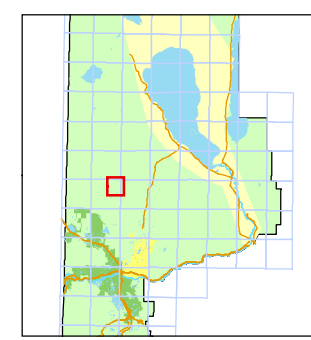
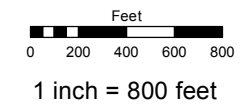
MAP OF DIVISION INTO LARGE PARCELS #33



Assessor's Map Number
079-50

STATE OF NEVADA
WASHOE COUNTY
ASSESSOR'S OFFICE
Joshua G. Wilson, Assessor

1001 East Ninth Street
Building D
Reno, Nevada 89512
(775) 328-2231



created by: KSB 10/07/10
last updated: CFB 8/30/11 KSB 1/11/13

area previously shown on map(s)
079-03, 079-05

NOTE: This map was prepared for the use of the Washoe County Assessor for assessment and illustrative purposes only. It does not represent a survey of the premises. No liability is assumed as to the sufficiency or accuracy of the data delineated hereon.