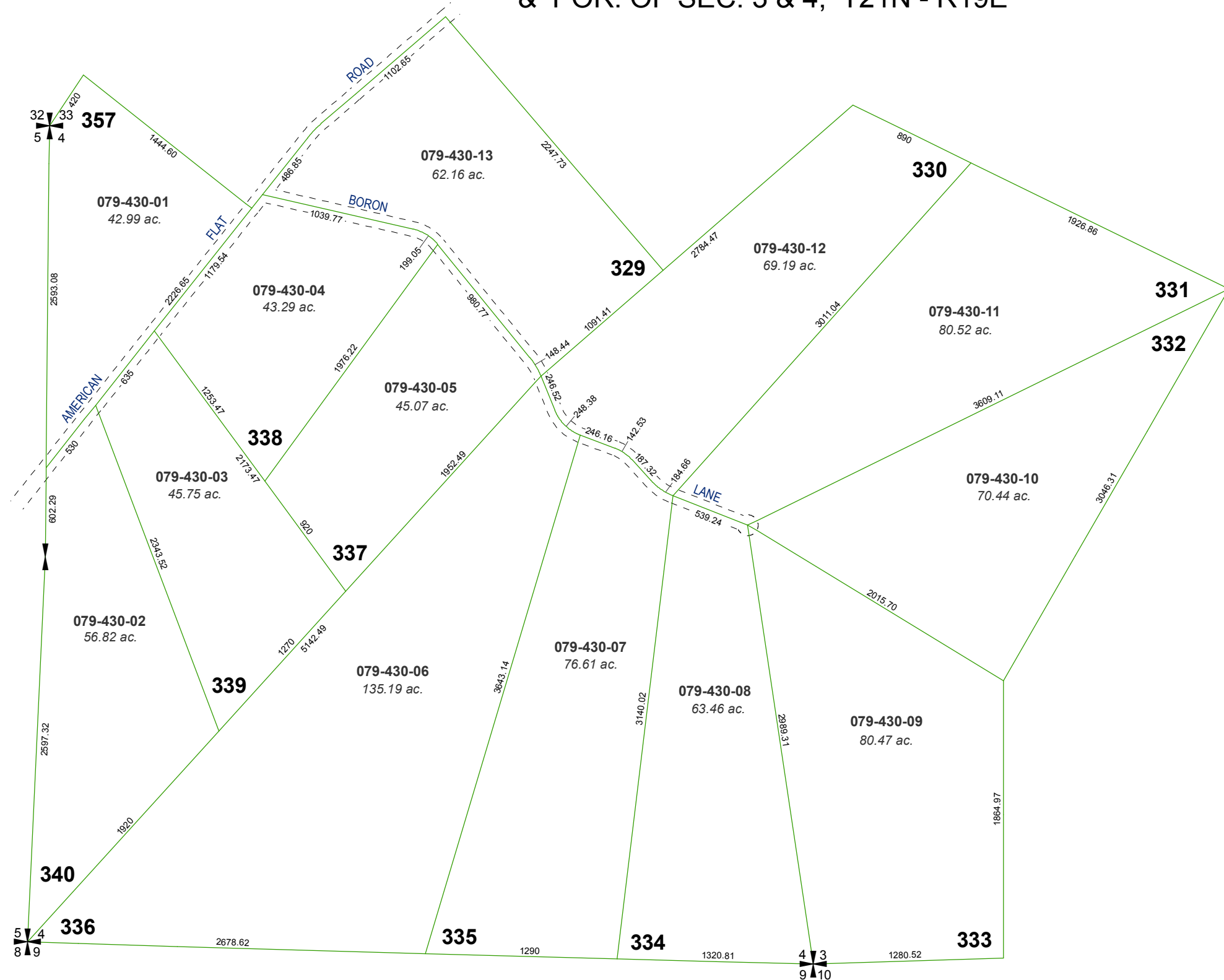


# RED ROCK ESTATES

MAP OF DIVISION INTO LARGE PARCELS #33  
 POR. OF THE S 1/2 OF SEC. 33, T22N - R19E  
 & POR. OF SEC. 3 & 4, T21N - R19E



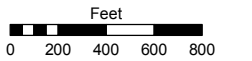
Assessor's Map Number

**079-43**

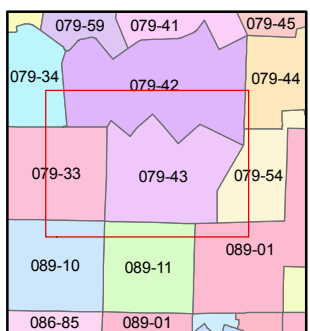
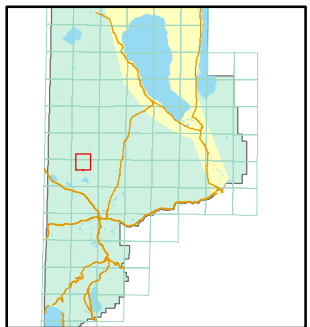
STATE OF NEVADA  
**WASHOE COUNTY**  
**ASSESSOR'S OFFICE**

Joshua G. Wilson, Assessor

1001 East Ninth Street  
 Building D  
 Reno, Nevada 89512  
 (775) 328-2231



1 inch = 800 feet



created by: TWT 3/15/2011

last updated: \_\_\_\_\_

area previously shown on map(s) \_\_\_\_\_

NOTE: This map was prepared for the use of the Washoe County Assessor for assessment and illustrative purposes only. It does not represent a survey of the premises. No liability is assumed as to the sufficiency or accuracy of the data delineated hereon.