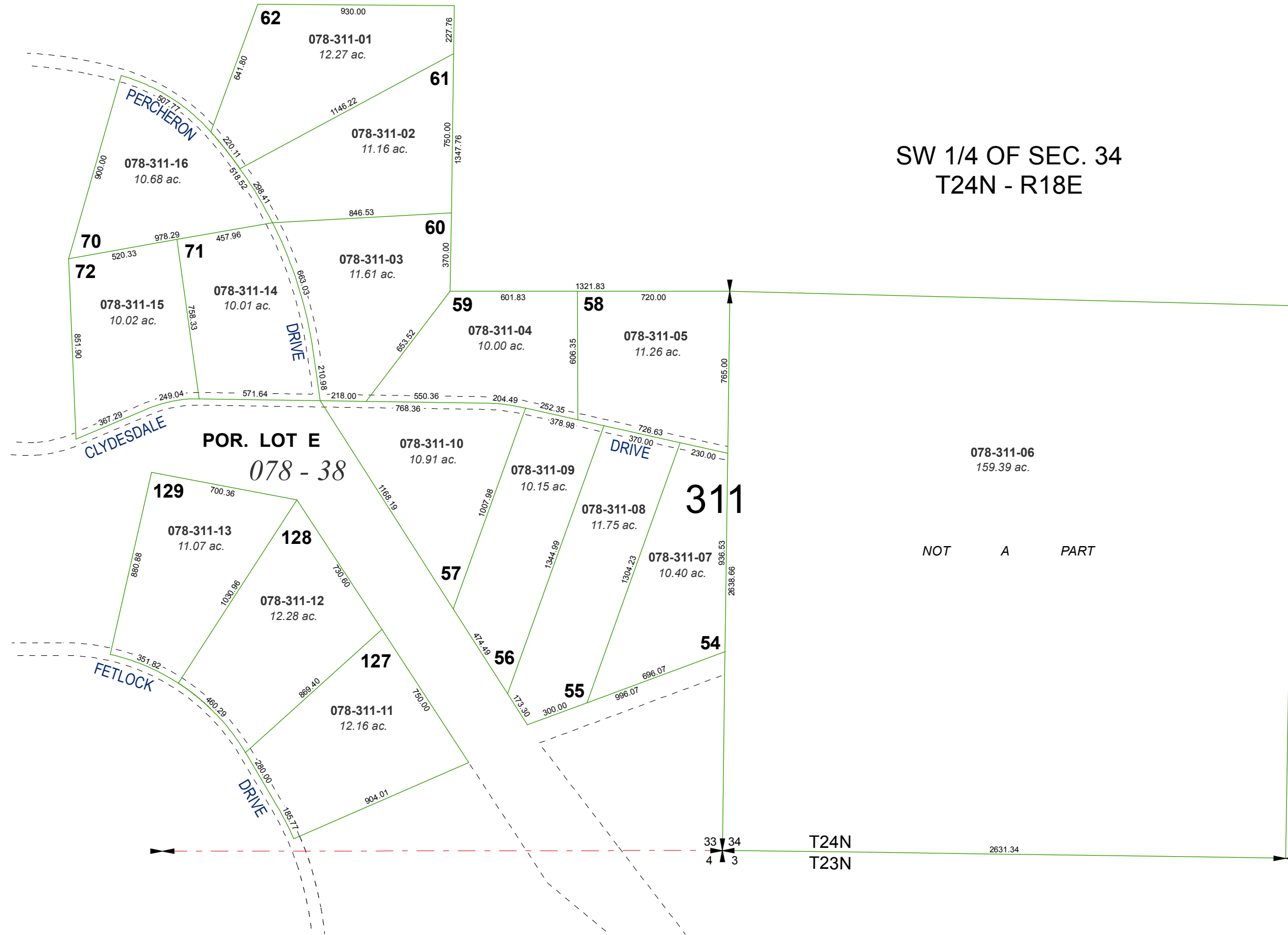


RECORD OF SURVEY # 687

POR. OF SEC. 33
T24N - R18E

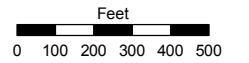
SW 1/4 OF SEC. 34
T24N - R18E



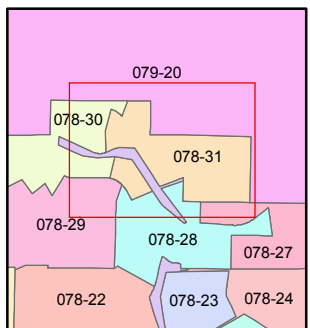
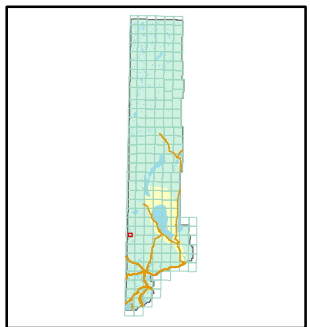
Assessor's Map Number
078-31

STATE OF NEVADA
WASHOE COUNTY
ASSESSOR'S OFFICE
Joshua G. Wilson, Assessor

1001 East Ninth Street
Building D
Reno, Nevada 89512
(775) 328-2231



1 inch = 500 feet



created by: TWT 3/31/2011

last updated: _____

area previously shown on map(s)

NOTE: This map was prepared for the use of the Washoe County Assessor for assessment and illustrative purposes only. It does not represent a survey of the premises. No liability is assumed as to the sufficiency or accuracy of the data delineated hereon.