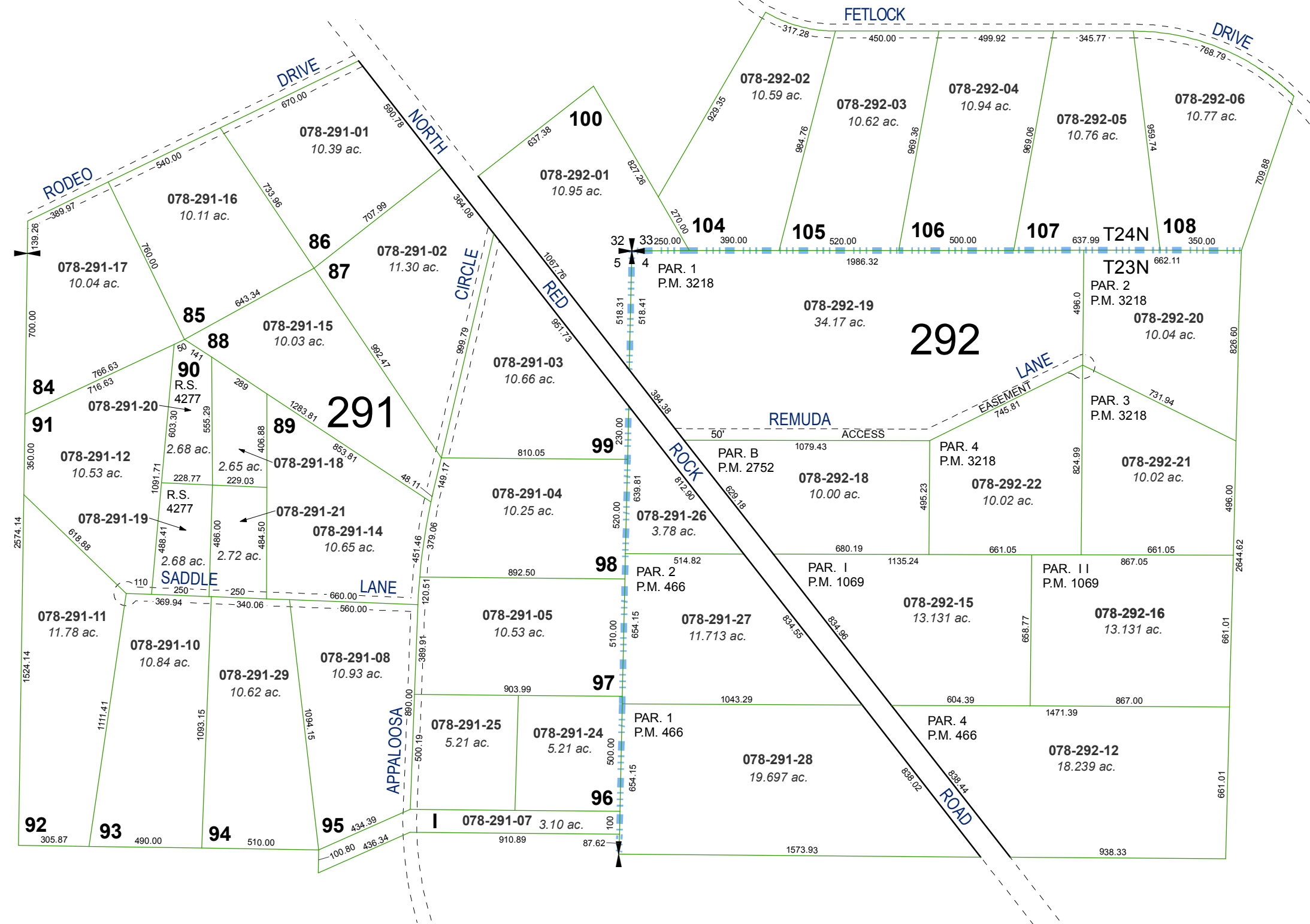


RECORD OF SURVEY # 687

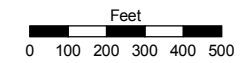
POR. SEC'S. 4 & 5, T23N - R18E
&
POR. SEC'S. 32 & 33, T24N - R18E



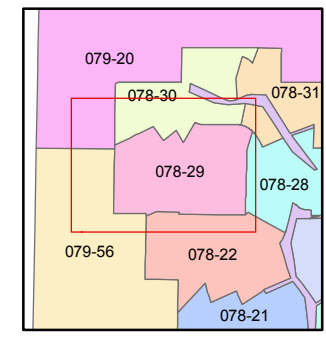
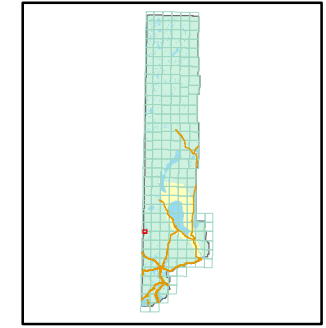
Assessor's Map Number
078-29

STATE OF NEVADA
WASHOE COUNTY
ASSESSOR'S OFFICE
Joshua G. Wilson, Assessor

1001 East Ninth Street
Building D
Reno, Nevada 89512
(775) 328-2231



1 inch = 500 feet



created by: TWT 4/4/2011
last updated: _____
area previously shown on map(s) _____

NOTE: This map was prepared for the use of the Washoe County Assessor for assessment and illustrative purposes only. It does not represent a survey of the premises. No liability is assumed as to the sufficiency or accuracy of the data delineated hereon.