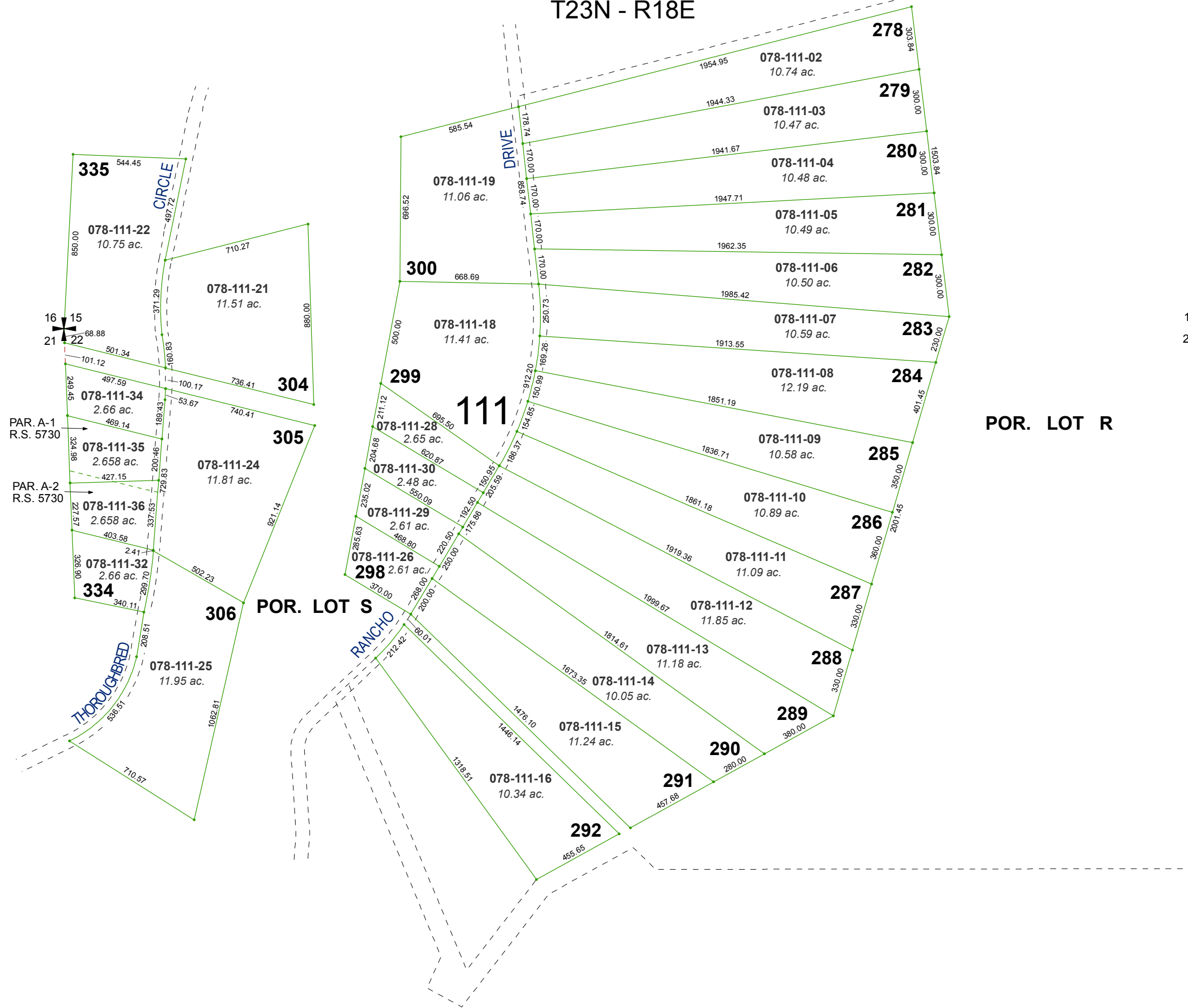


RECORD OF SURVEY # 687

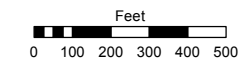
PORTIONS OF SECTIONS 15 21 & 22 T23N - R18E



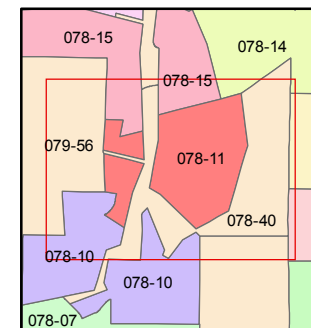
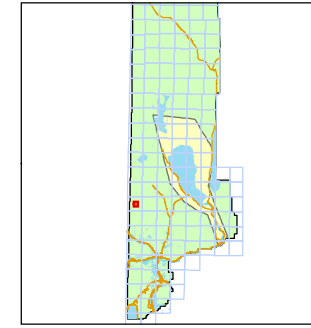
Assessor's Map Number
078-11

STATE OF NEVADA
WASHOE COUNTY
ASSESSOR'S OFFICE
Michael E. Clark, Assessor

1001 East Ninth Street
Building D
Reno, Nevada 89512
(775) 328-2231



1 inch = 500 feet



created by: TWT 04/06/2011

last updated: EMG 4/28/16

area previously shown on map(s)
071-15

NOTE: This map was prepared for the use of the Washoe County Assessor for assessment and illustrative purposes only. It does not represent a survey of the premises. No liability is assumed as to the sufficiency or accuracy of the data delineated hereon.