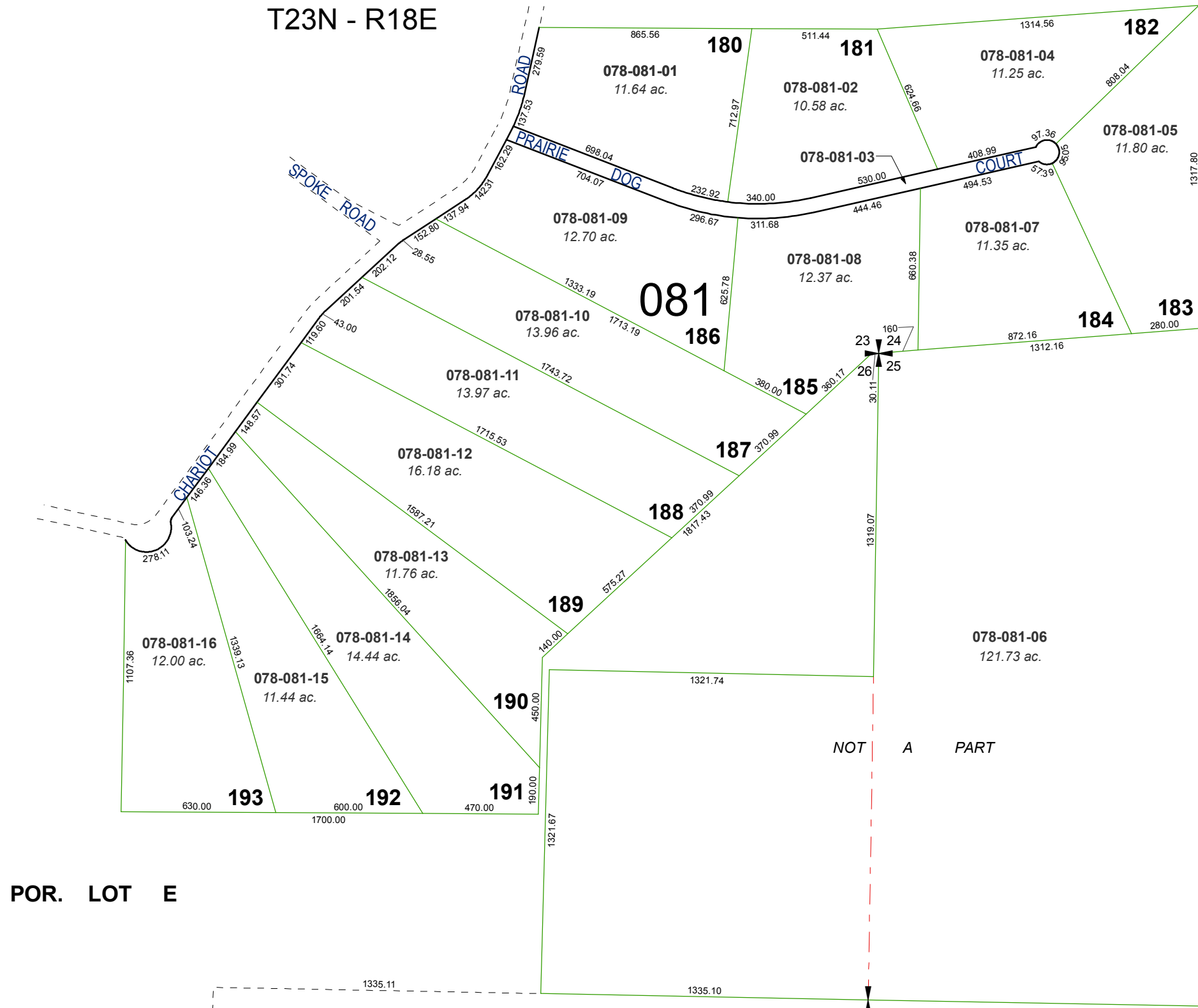


RECORD OF SURVEY # 684 AMENDED RECORD OF SURVEY # 831

POR'S. OF SEC'S. 23, 24, 25 & 26
T23N - R18E



POR. LOT E

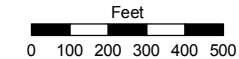
Assessor's Map Number

078-08

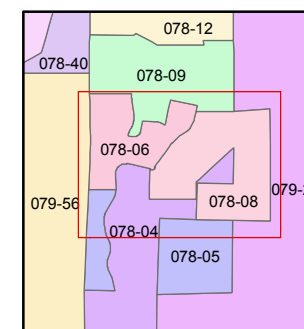
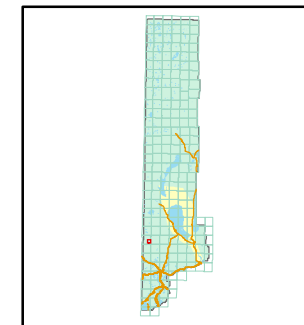
STATE OF NEVADA
WASHOE COUNTY
ASSESSOR'S OFFICE

Joshua G. Wilson, Assessor

1001 East Ninth Street
Building D
Reno, Nevada 89512
(775) 328-2231



1 inch = 500 feet



created by: TWT 4/8/2011

last updated: _____

area previously shown on map(s)

NOTE: This map was prepared for the use of the Washoe County Assessor for assessment and illustrative purposes only. It does not represent a survey of the premises. No liability is assumed as to the sufficiency or accuracy of the data delineated hereon.