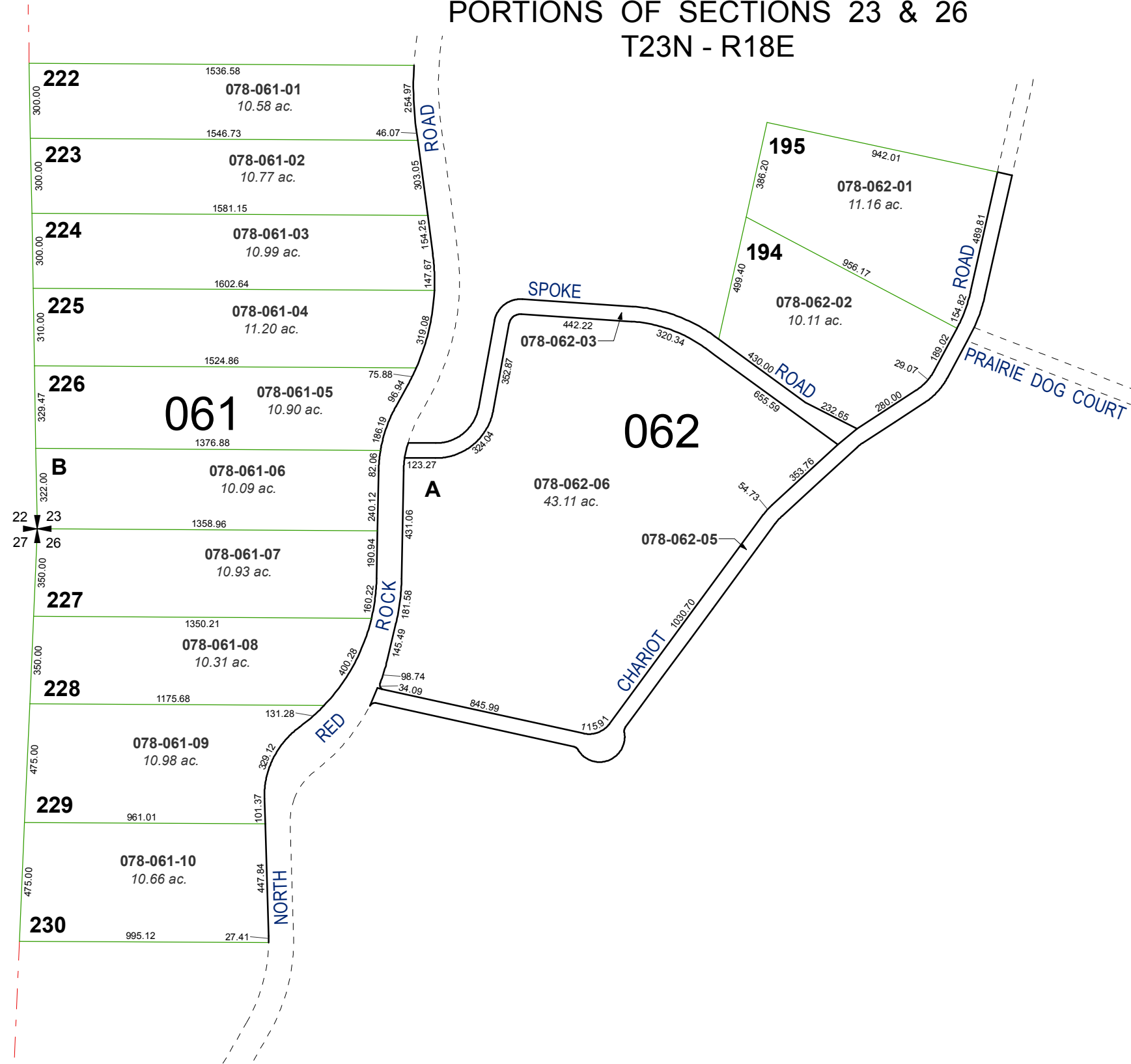


# RECORD OF SURVEY # 684 AMENDED RECORD OF SURVEY # 831

PORTIONS OF SECTIONS 23 & 26  
T23N - R18E

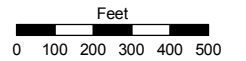


Assessor's Map Number  
**078-06**

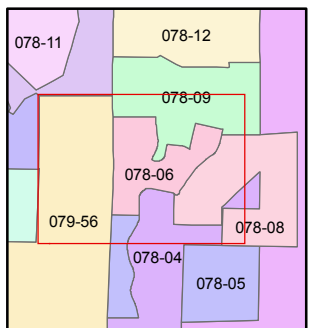
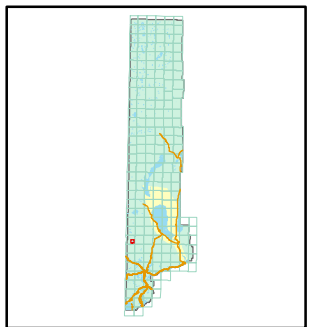
STATE OF NEVADA  
**WASHOE COUNTY**  
ASSESSOR'S OFFICE

Joshua G. Wilson, Assessor

1001 East Ninth Street  
Building D  
Reno, Nevada 89512  
(775) 328-2231



1 inch = 500 feet



created by: TWT 4/8/2011

last updated: \_\_\_\_\_

area previously shown on map(s)  
\_\_\_\_\_

NOTE: This map was prepared for the use of the Washoe County Assessor for assessment and illustrative purposes only. It does not represent a survey of the premises. No liability is assumed as to the sufficiency or accuracy of the data delineated hereon.