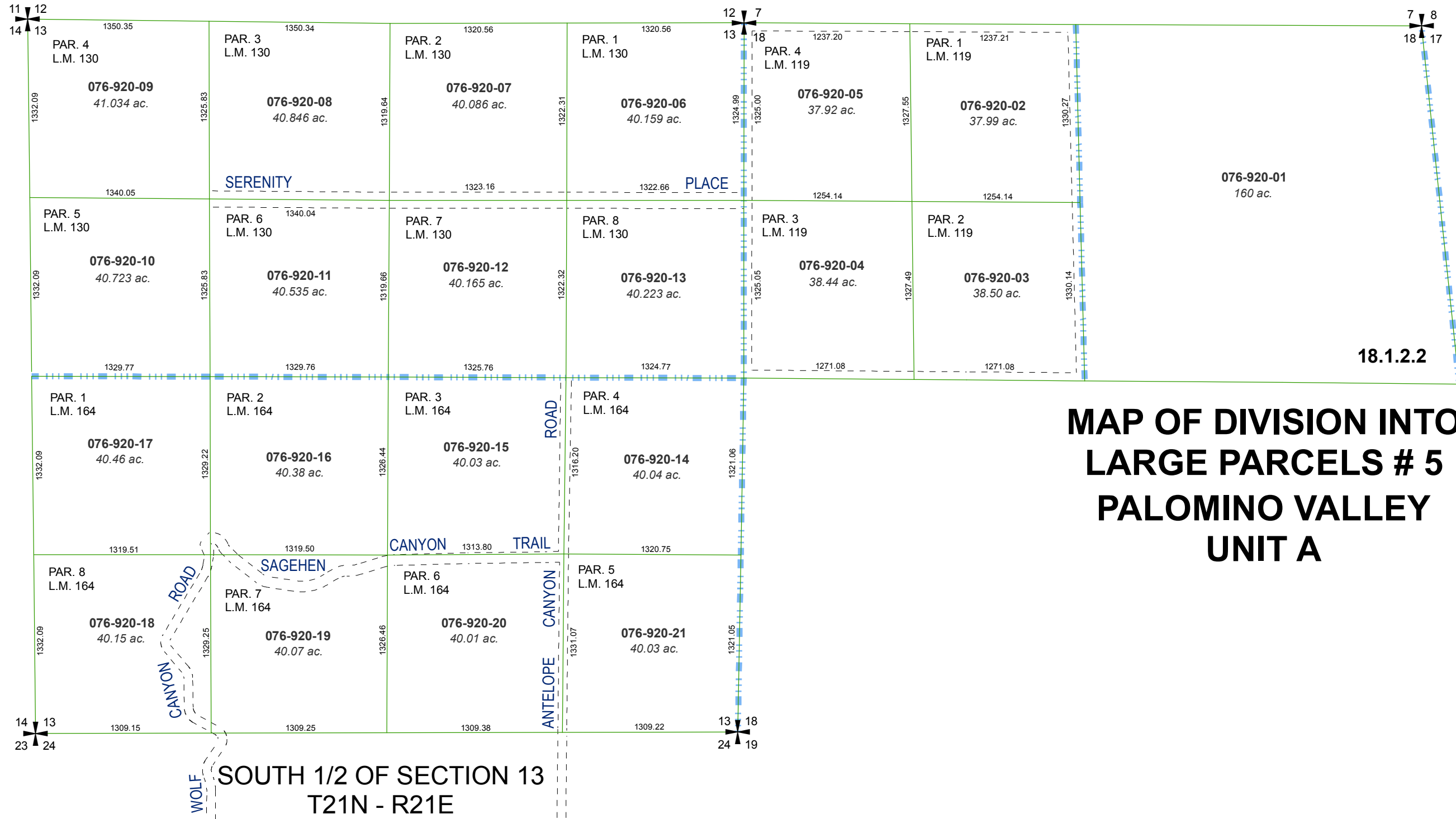


MAP OF DIVISION INTO LARGE PARCELS # 130

NORTH 1/2 OF SECTION 13
T21N - R21E

MAP OF DIVISION INTO LARGE PARCELS # 119

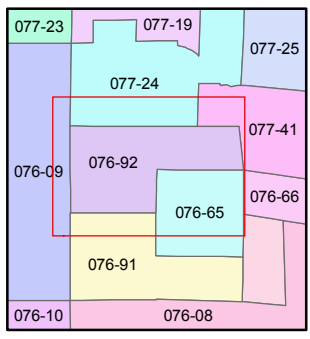
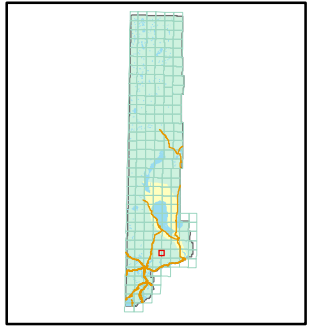
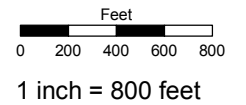
NORTH 1/2 OF SECTION 18
T21N - R22E



MAP OF DIVISION INTO LARGE PARCELS # 164

Assessor's Map Number
076-92

STATE OF NEVADA
WASHOE COUNTY
ASSESSOR'S OFFICE
Joshua G. Wilson, Assessor
1001 East Ninth Street
Building D
Reno, Nevada 89512
(775) 328-2231



created by: TWT 6/15/2011
last updated: _____
area previously shown on map(s)
076-08

NOTE: This map was prepared for the use of the Washoe County Assessor for assessment and illustrative purposes only. It does not represent a survey of the premises. No liability is assumed as to the sufficiency or accuracy of the data delineated hereon.