

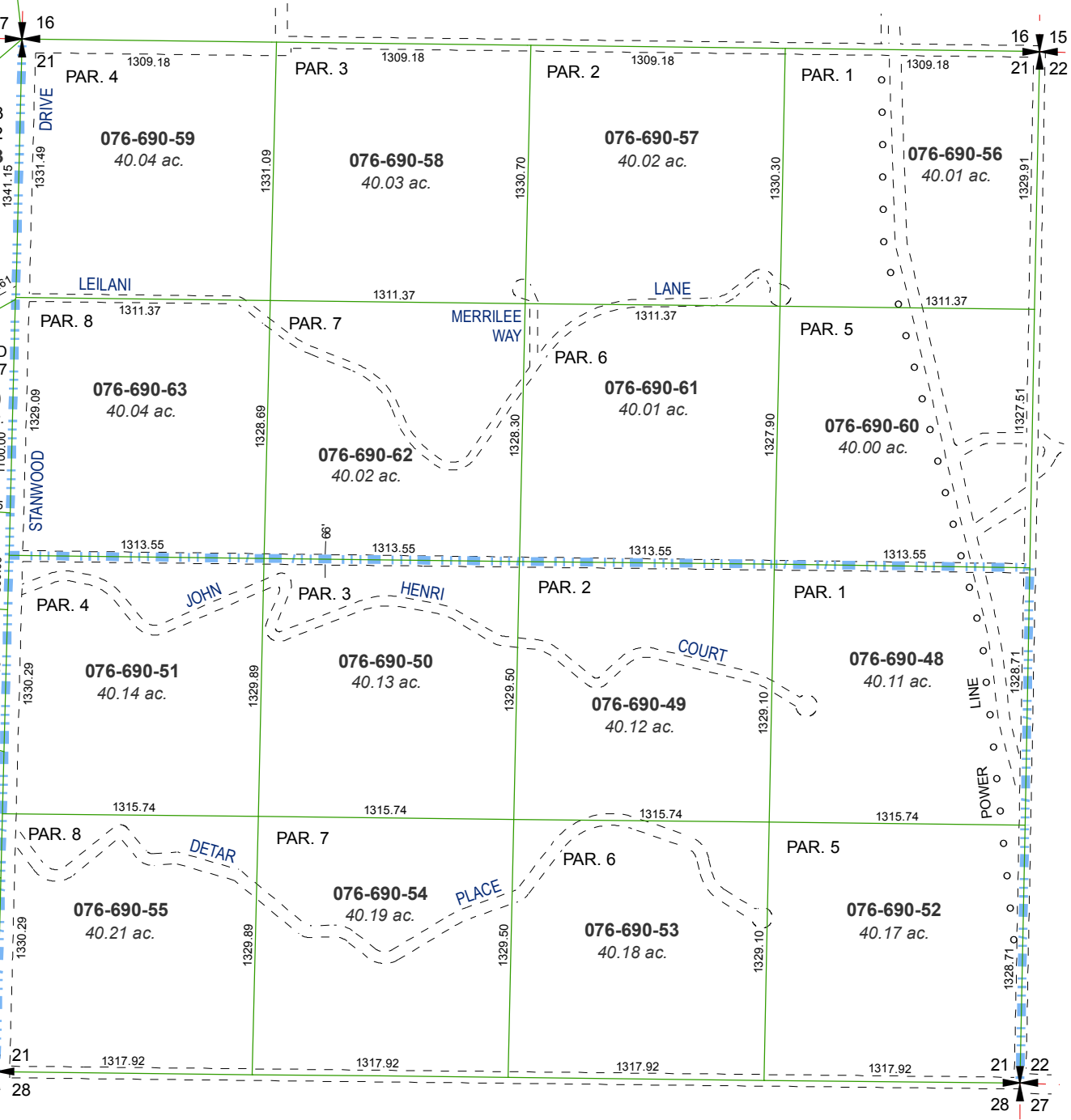
MAP OF DIVISION INTO LARGE PARCELS # 23

SPANISH SPRINGS VALLEY RANCHES - UNIT 2

RECORD OF SURVEY # 1095
 POR. SEC. 17, 18, 19, 20 & 29, T21N - R21E



MAP OF DIVISION INTO LARGE PARCELS # 165

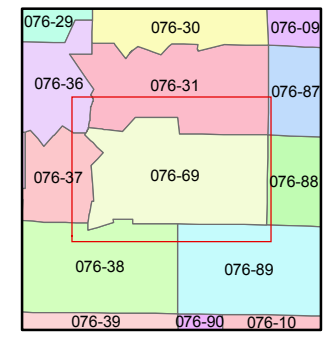
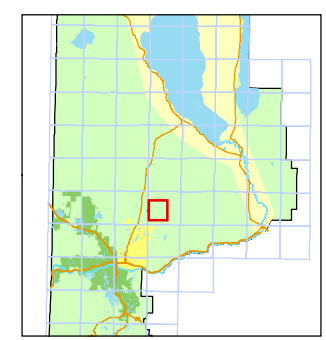
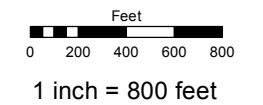


MAP OF DIVISION INTO LARGE PARCELS # 156

Assessor's Map Number
076-69

STATE OF NEVADA
WASHOE COUNTY
 ASSESSOR'S OFFICE
 Joshua G. Wilson, Assessor

1001 East Ninth Street
 Building D
 Reno, Nevada 89512
 (775) 328-2231



created by: TWT 6/24/2011
 last updated: KSB 6/27/12
 area previously shown on map(s)

NOTE: This map was prepared for the use of the Washoe County Assessor for assessment and illustrative purposes only. It does not represent a survey of the premises. No liability is assumed as to the sufficiency or accuracy of the data delineated hereon.