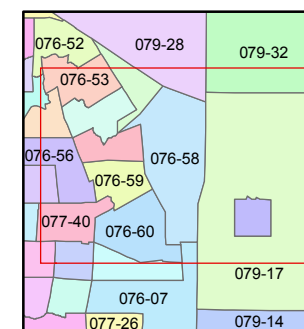
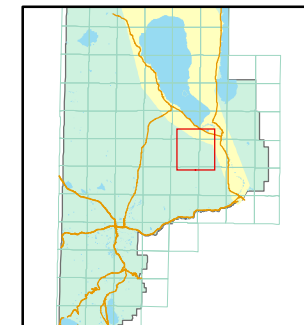


1 inch = 2,640 feet

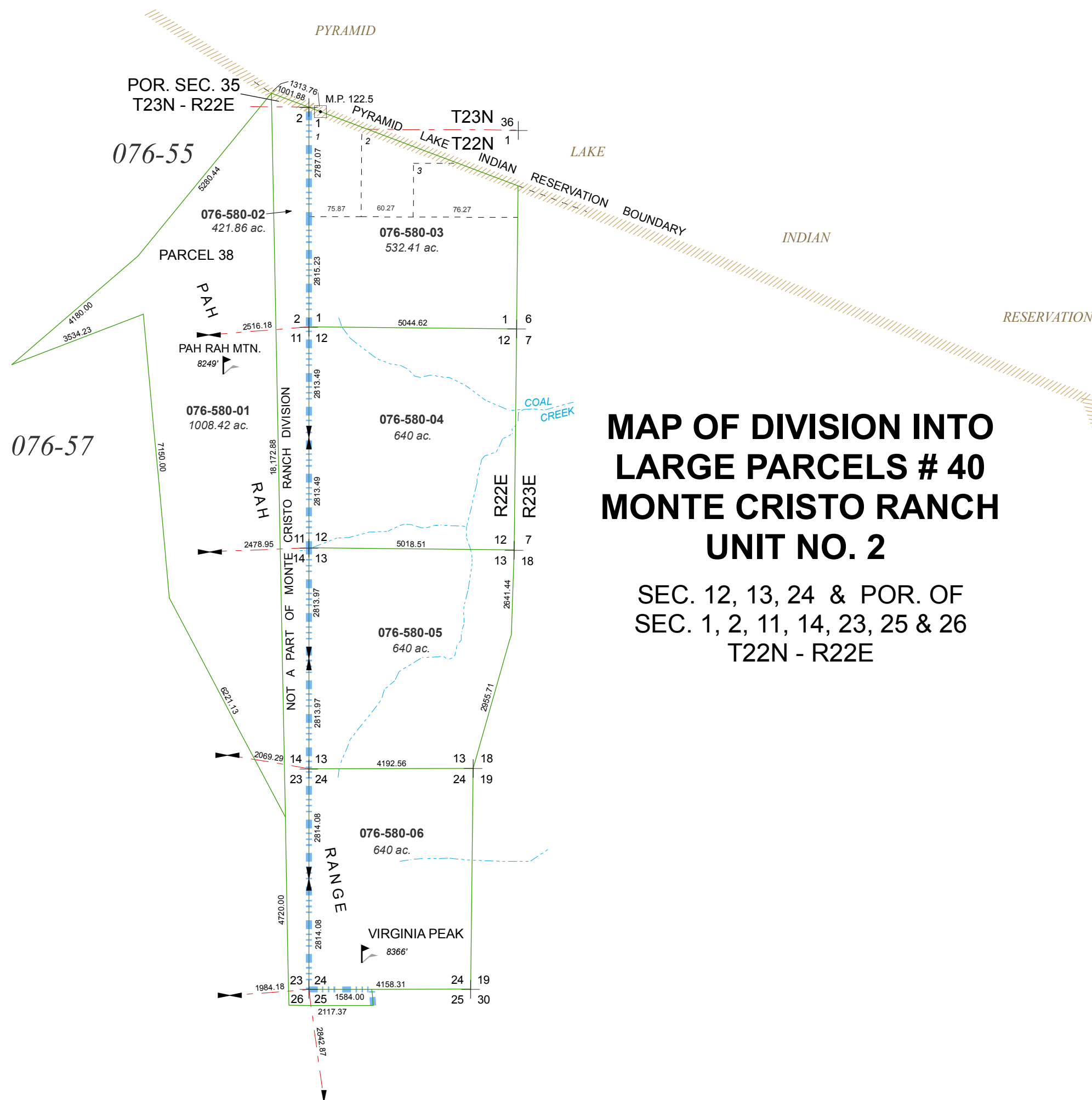


created by: TWT 5/18/2011

last updated: _____

area previously shown on map(s)

NOTE: This map was prepared for the use of the Washoe County Assessor for assessment and illustrative purposes only. It does not represent a survey of the premises. No liability is assumed as to the sufficiency or accuracy of the data delineated hereon.



MAP OF DIVISION INTO LARGE PARCELS # 40 MONTE CRISTO RANCH UNIT NO. 2

SEC. 12, 13, 24 & POR. OF
SEC. 1, 2, 11, 14, 23, 25 & 26
T22N - R22E