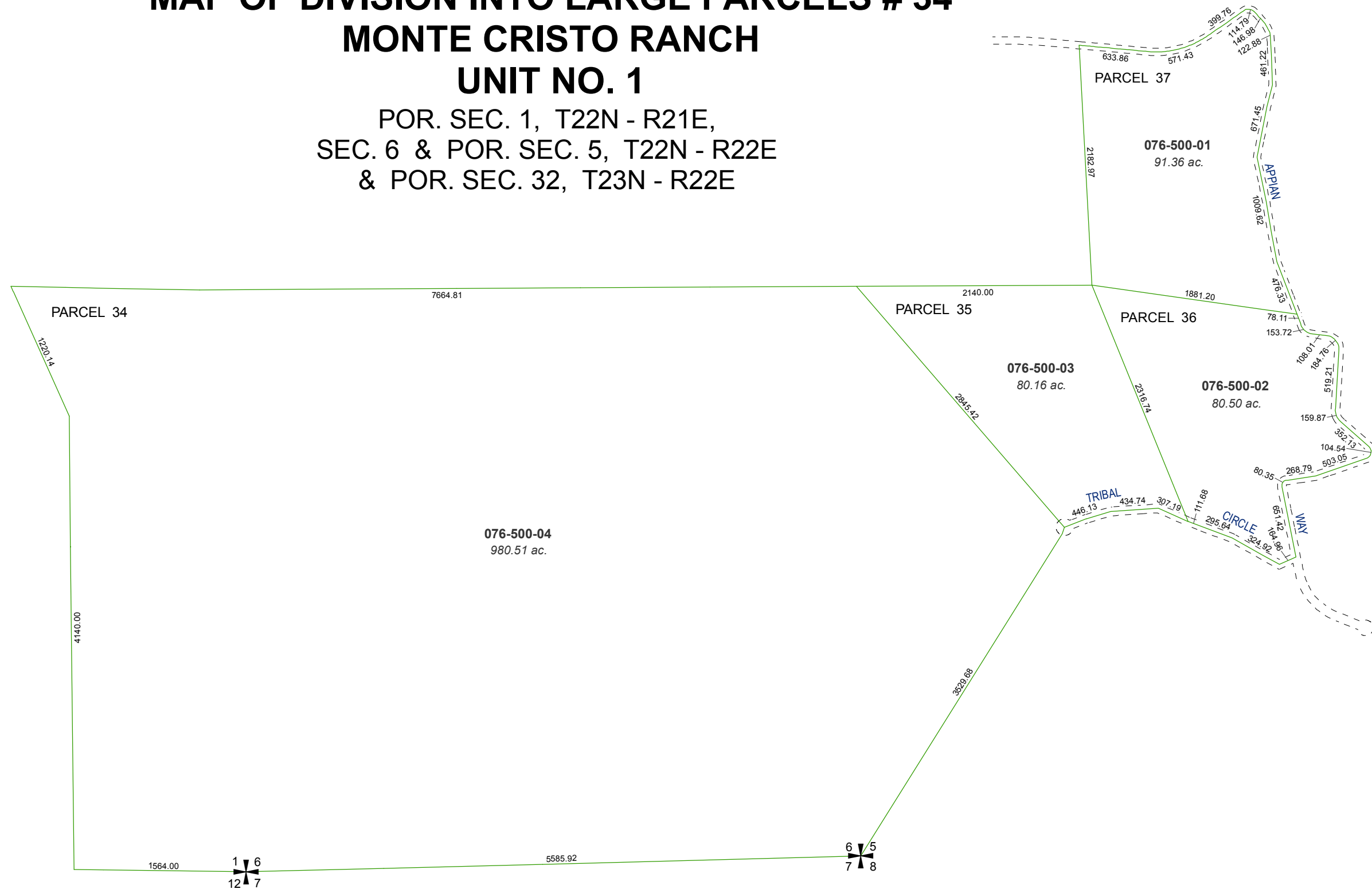


MAP OF DIVISION INTO LARGE PARCELS # 34 MONTE CRISTO RANCH UNIT NO. 1

POR. SEC. 1, T22N - R21E,
SEC. 6 & POR. SEC. 5, T22N - R22E
& POR. SEC. 32, T23N - R22E



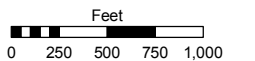
Assessor's Map Number

076-50

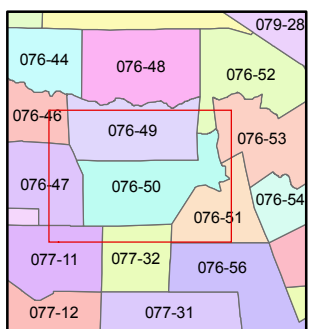
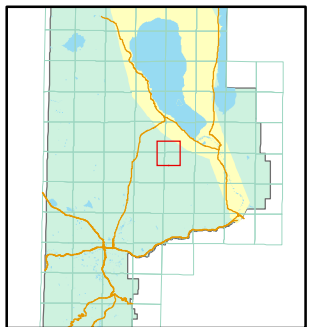
STATE OF NEVADA
WASHOE COUNTY
ASSESSOR'S OFFICE

Joshua G. Wilson, Assessor

1001 East Ninth Street
Building D
Reno, Nevada 89512
(775) 328-2231



1 inch = 1,000 feet



created by: TWT 5/17/2011

last updated: _____

area previously shown on map(s)

NOTE: This map was prepared for the use of the Washoe County Assessor for assessment and illustrative purposes only. It does not represent a survey of the premises. No liability is assumed as to the sufficiency or accuracy of the data delineated hereon.