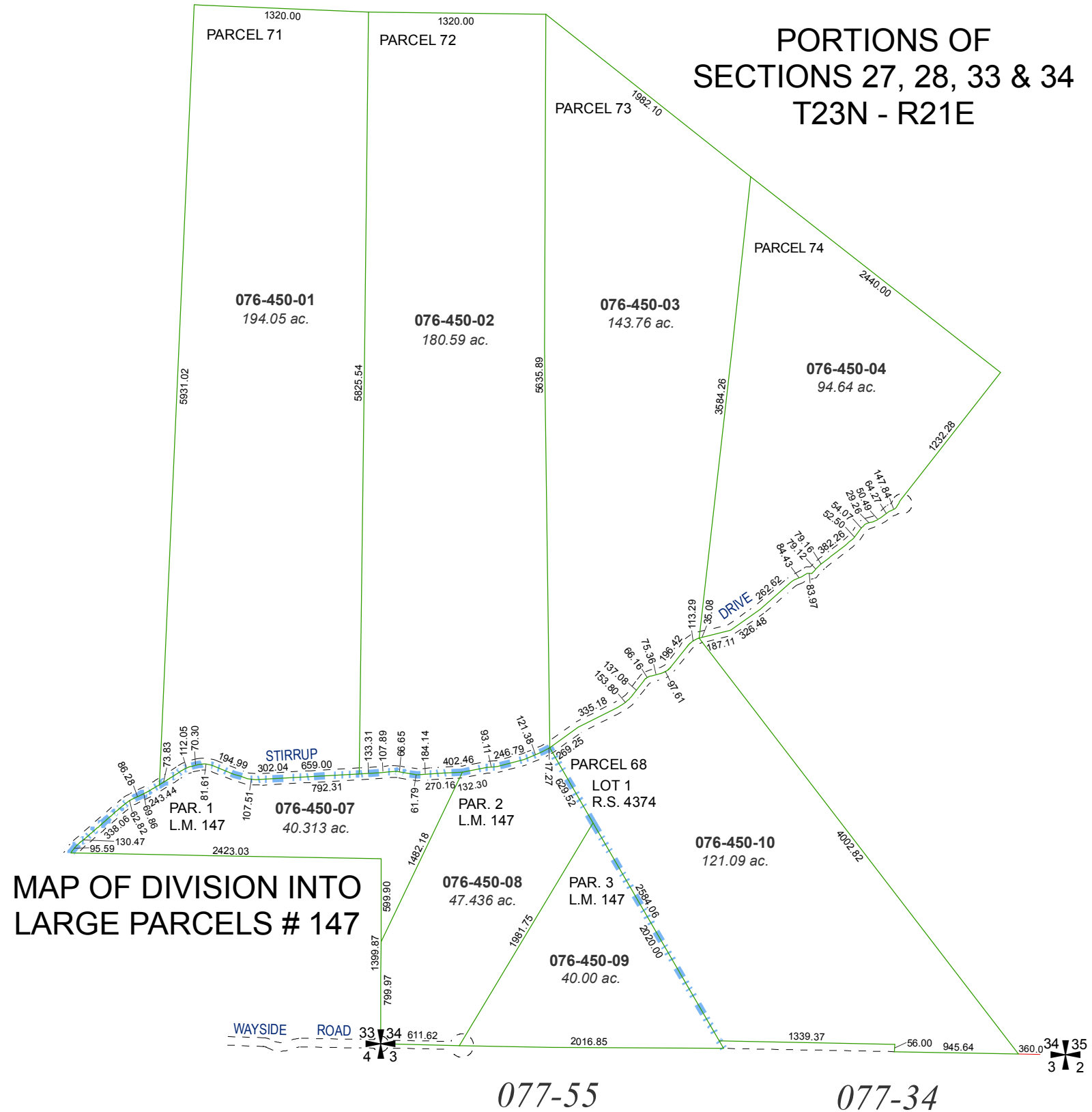


# MAP OF DIVISION INTO LARGE PARCELS # 34 MONTE CRISTO RANCH UNIT NO. 1



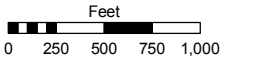
Assessor's Map Number

**076-45**

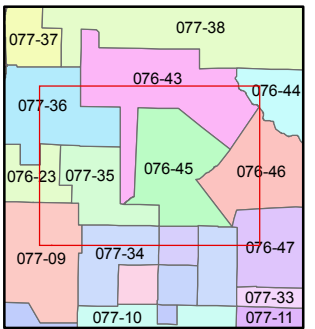
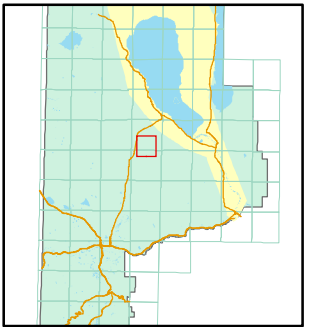
STATE OF NEVADA  
**WASHOE COUNTY  
 ASSESSOR'S OFFICE**

Joshua G. Wilson, Assessor

1001 East Ninth Street  
 Building D  
 Reno, Nevada 89512  
 (775) 328-2231



1 inch = 1,000 feet



created by: TWT 5/12/2011

last updated: \_\_\_\_\_

area previously shown on map(s)

NOTE: This map was prepared for the use of the Washoe County Assessor for assessment and illustrative purposes only. It does not represent a survey of the premises. No liability is assumed as to the sufficiency or accuracy of the data delineated hereon.