

# MAP OF DIVISION INTO LARGE PARCELS # 69

# MAP OF DIVISION INTO LARGE PARCELS # 89

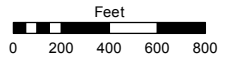
SECTIONS 8 & 9 AND PORTIONS OF SECTIONS 16 & 17, T21N - R21E

Assessor's Map Number

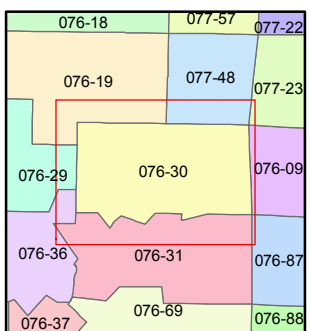
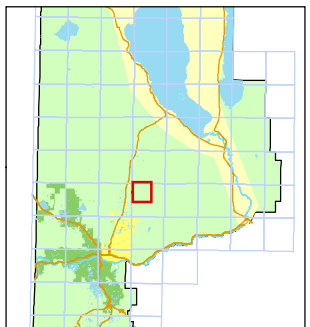
**076-30**

STATE OF NEVADA  
**WASHOE COUNTY**  
ASSESSOR'S OFFICE  
Joshua G. Wilson, Assessor

1001 East Ninth Street  
Building D  
Reno, Nevada 89512  
(775) 328-2231



1 inch = 800 feet

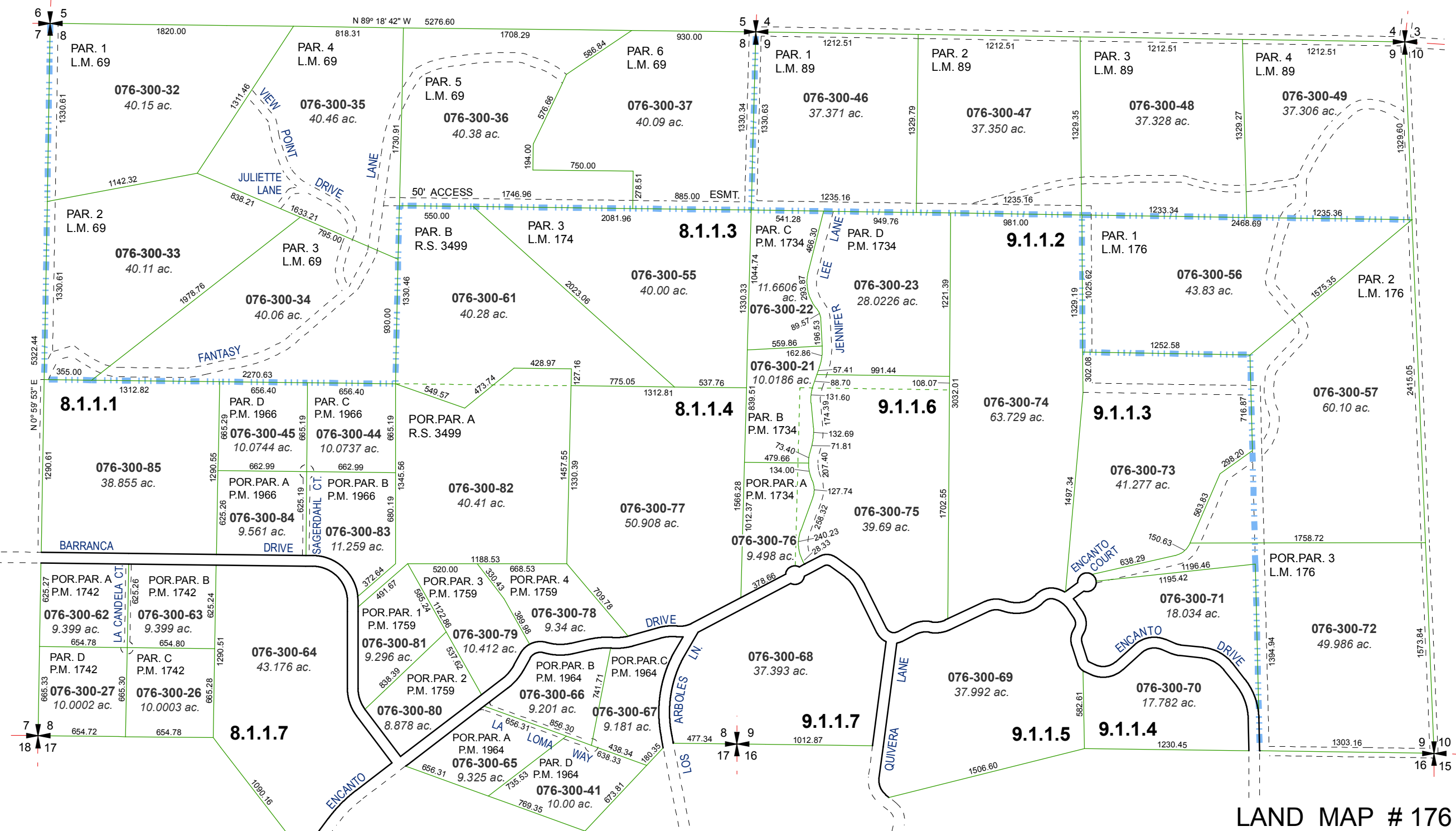


created by: TWT 6/17/2011

last updated: KSB 6/20/12

area previously shown on map(s)

NOTE: This map was prepared for the use of the Washoe County Assessor for assessment and illustrative purposes only. It does not represent a survey of the premises. No liability is assumed as to the sufficiency or accuracy of the data delineated hereon.



LAND MAP # 176

# MAP OF DIVISION INTO LARGE PARCELS # 20 SPANISH SPRINGS VALLEY RANCHES - UNIT 1 RECORD OF SURVEY # 1085