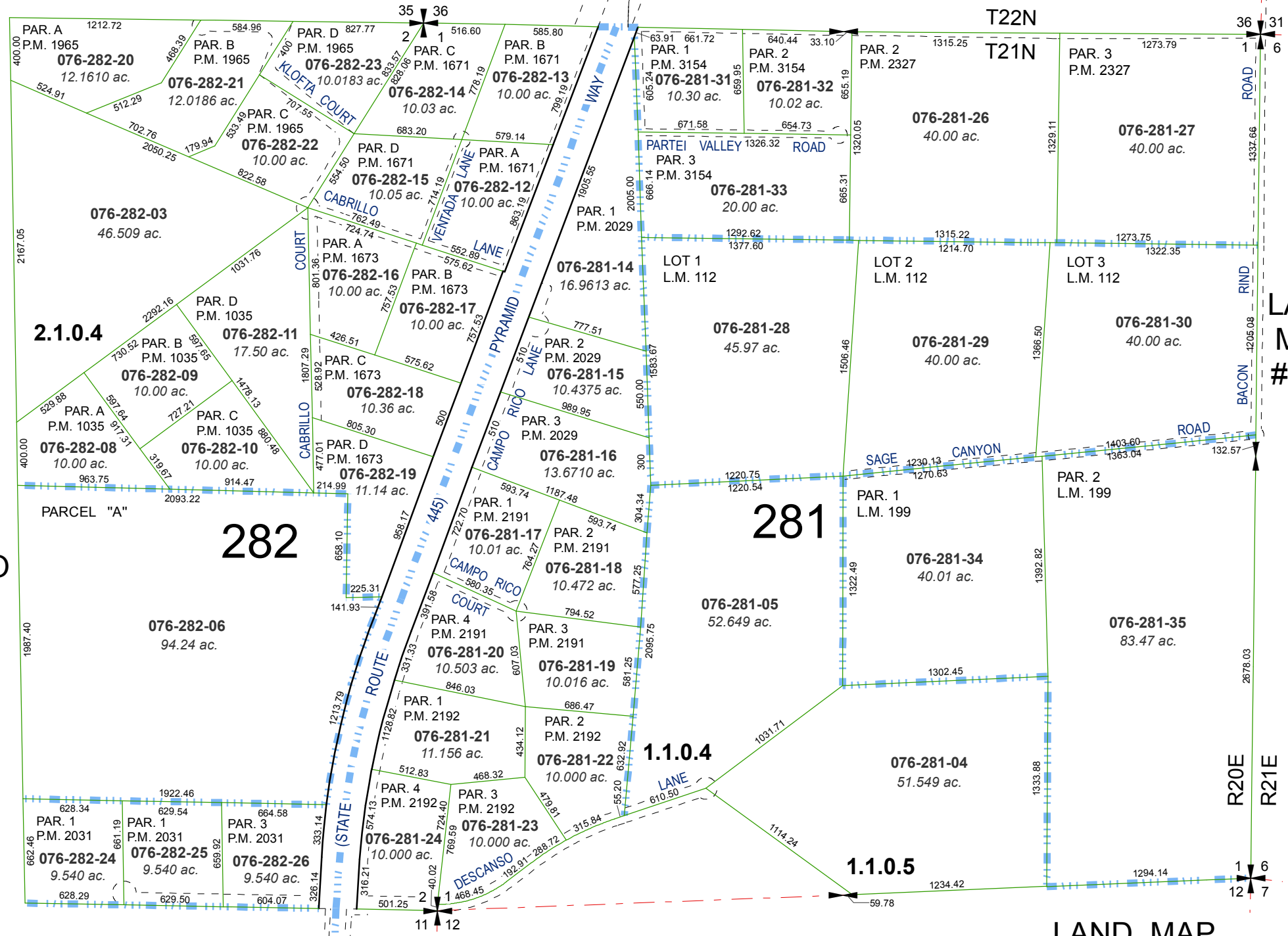


**MAP OF DIVISION INTO
LARGE PARCELS # 20
SPANISH SPRINGS VALLEY RANCHES
UNIT 1**

**MAP OF DIVISION INTO
LARGE PARCELS # 10
PALOMINO VALLEY - UNIT NO.5**

PORTIONS OF SECTIONS 1 & 2, T21N - R20E
RECORD OF SURVEY # 1083 &
AMENDED RECORD OF SURVEY # 1206

RECORD OF SURVEY # 983



**MAP OF DIVISION INTO
LARGE PARCELS # 29
SPANISH SPRINGS
VALLEY RANCHES
UNIT 3**

**MAP OF DIVISION INTO
LARGE PARCELS # 78**

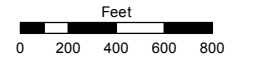
BOOK 538

LAND MAP # 199

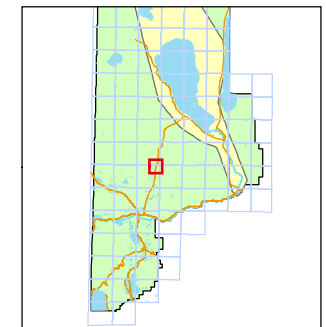
Assessor's Map Number
076-28

STATE OF NEVADA
**WASHOE COUNTY
ASSESSOR'S OFFICE**
Joshua G. Wilson, Assessor

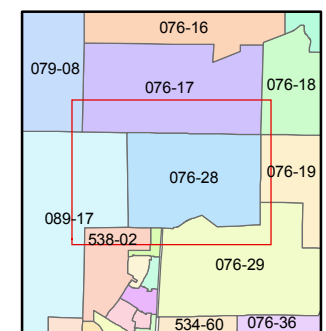
1001 East Ninth Street
Building D
Reno, Nevada 89512
(775) 328-2231



1 inch = 800 feet



LAND MAP # 112



created by: TWT 6/9/2011

last updated: CFB 10/12/2011

area previously shown on map(s)

NOTE: This map was prepared for the use of the Washoe County Assessor for assessment and illustrative purposes only. It does not represent a survey of the premises. No liability is assumed as to the sufficiency or accuracy of the data delineated hereon.