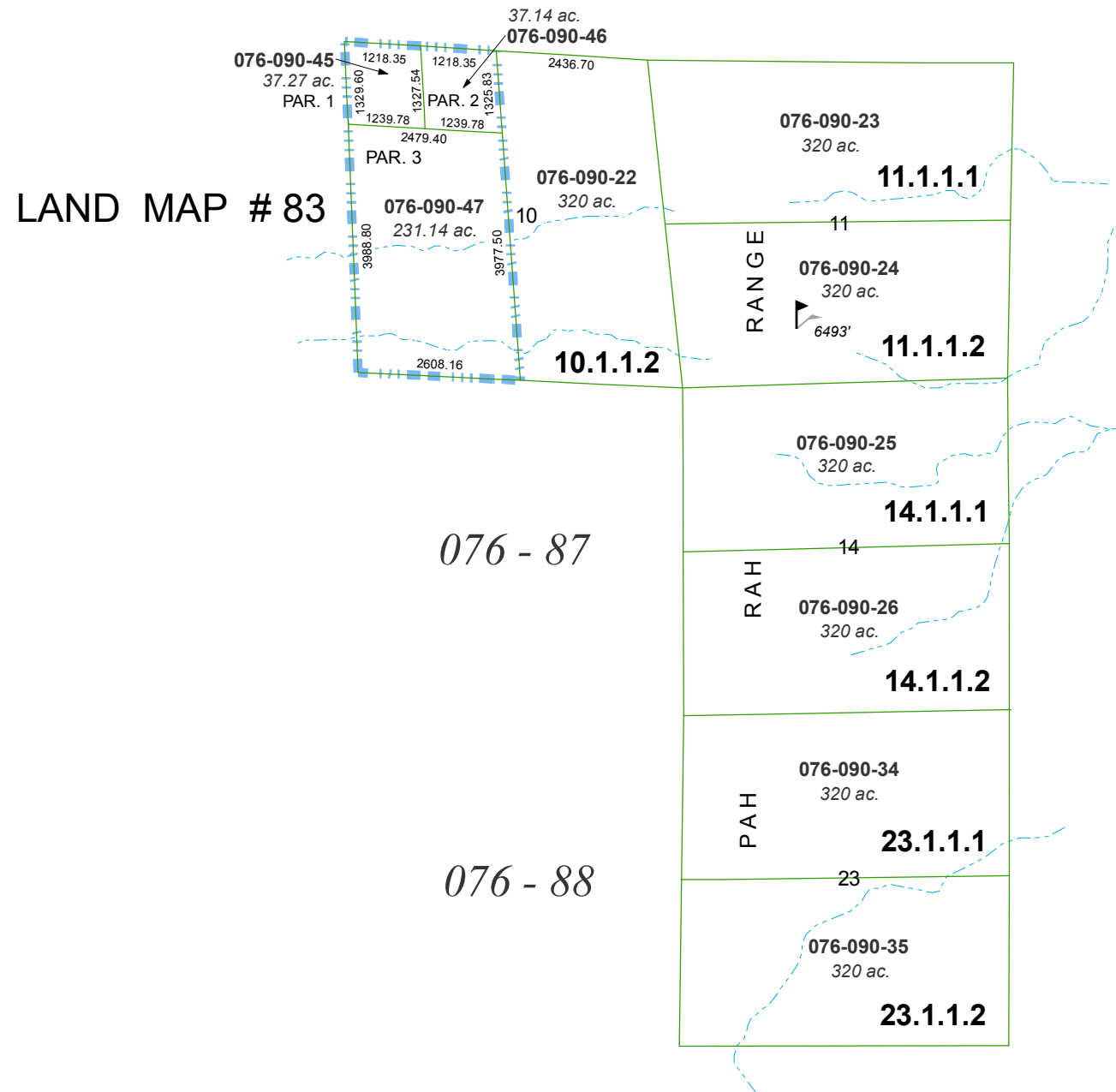


MAP OF DIVISION INTO LARGE PARCELS # 5 PALOMINO VALLEY - UNIT A

SECTIONS 10, 11, 14 & 23
T21N - R21E



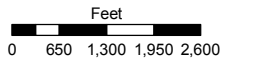
Assessor's Map Number

076-09

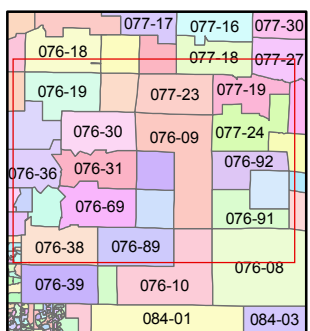
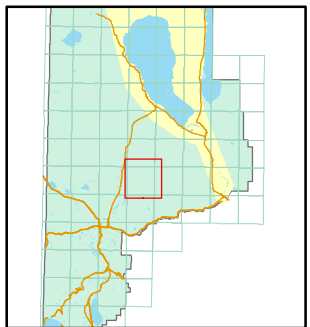
STATE OF NEVADA
WASHOE COUNTY
ASSESSOR'S OFFICE

Joshua G. Wilson, Assessor

1001 East Ninth Street
Building D
Reno, Nevada 89512
(775) 328-2231



1 inch = 2,640 feet



created by: TWT 6/15/2011

last updated: _____

area previously shown on map(s)

NOTE: This map was prepared for the use of the Washoe County Assessor for assessment and illustrative purposes only. It does not represent a survey of the premises. No liability is assumed as to the sufficiency or accuracy of the data delineated hereon.