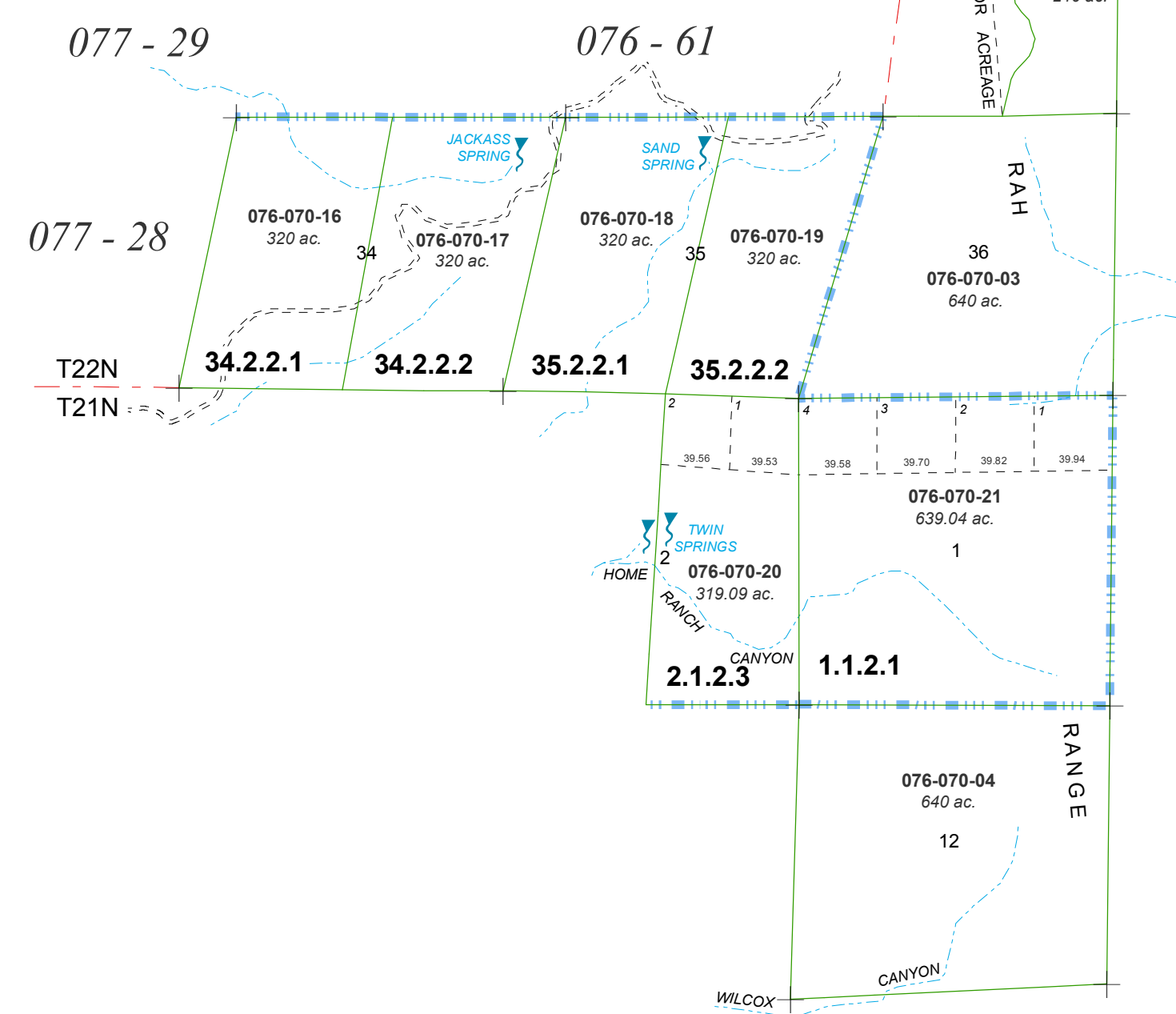


MAP OF DIVISION INTO LARGE PARCELS # 19 PALOMINO VALLEY - UNIT E

SEC. 1, 12 & E 1/2 OF SEC. 2, T21N - R22E AND
SEC. 34, 35, 36 & POR. SEC. 25, T22N - R22E

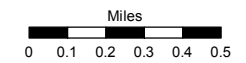


076 - 58

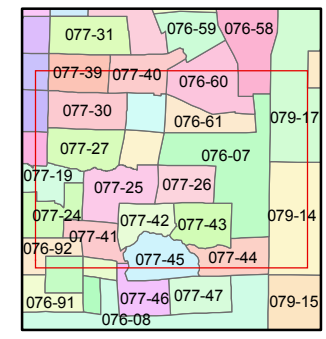
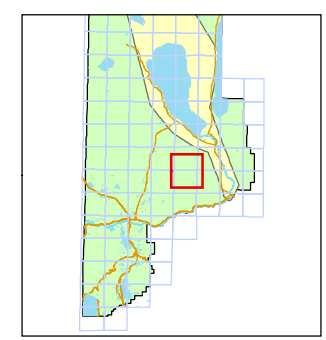
Assessor's Map Number
076-07

STATE OF NEVADA
WASHOE COUNTY
ASSESSOR'S OFFICE
Joshua G. Wilson, Assessor

1001 East Ninth Street
Building D
Reno, Nevada 89512
(775) 328-2231



1 inch = 2,640 feet



created by: TWT 6/10/2011
last updated: CFB 10/11/2011

area previously shown on map(s)

NOTE: This map was prepared for the use of the Washoe County Assessor for assessment and illustrative purposes only. It does not represent a survey of the premises. No liability is assumed as to the sufficiency or accuracy of the data delineated hereon.