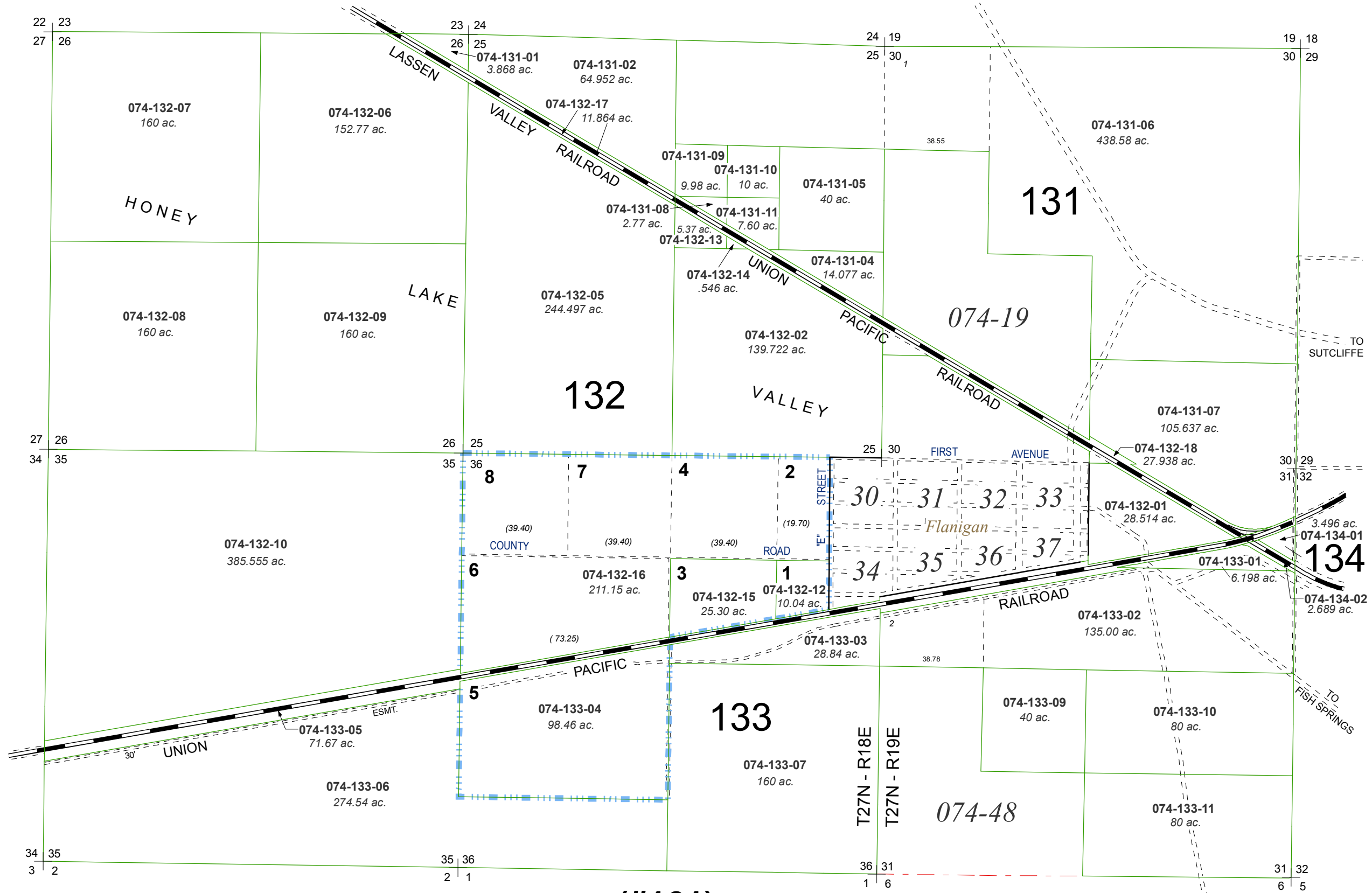


SEC'S. 25, 26, 35 & PORT. SEC. 36
T27N - R18E

PORTIONS OF SEC'S. 30 & 31
T27N - R19E



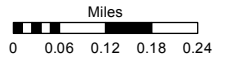
**(#161)
FLANIGAN ACRES**

Assessor's Map Number

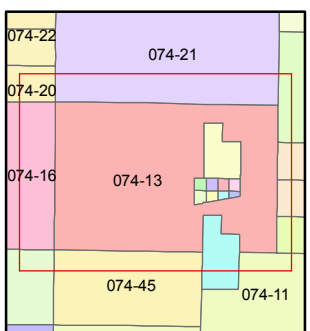
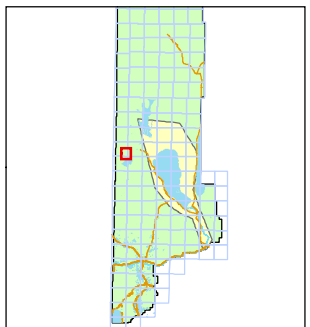
074-13

STATE OF NEVADA
WASHOE COUNTY
ASSESSOR'S OFFICE
Joshua G. Wilson, Assessor

1001 East Ninth Street
Building D
Reno, Nevada 89512
(775) 328-2231



1 inch = 1,320 feet



created by: TWT 12/28/2010

last updated: CFB 11/03/2011

area previously shown on map(s)

NOTE: This map was prepared for the use of the Washoe County Assessor for assessment and illustrative purposes only. It does not represent a survey of the premises. No liability is assumed as to the sufficiency or accuracy of the data delineated hereon.