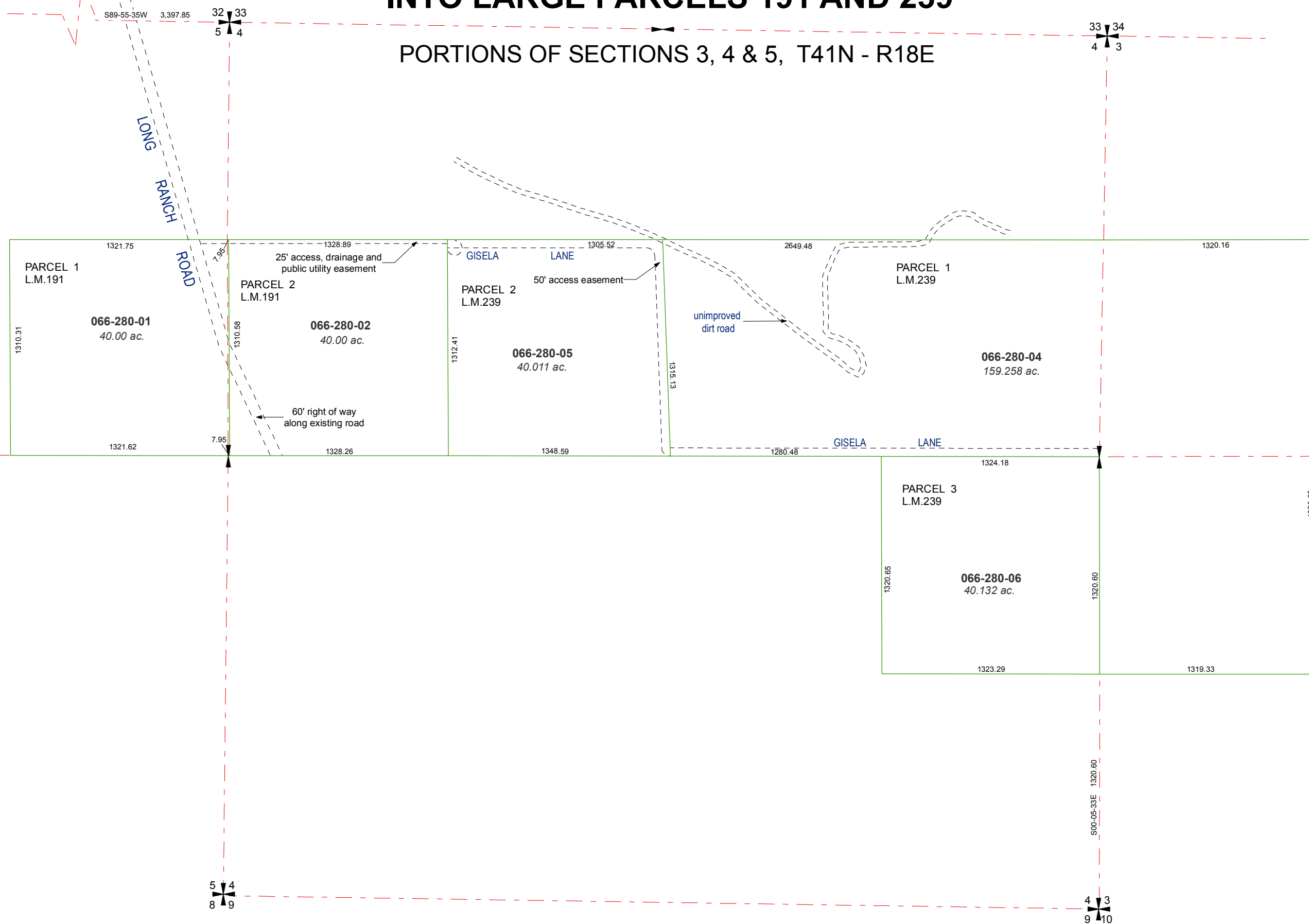


CALIFORNIA
NEVADA

MAP OF DIVISION INTO LARGE PARCELS 191 AND 239

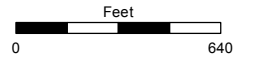
PORTIONS OF SECTIONS 3, 4 & 5, T41N - R18E



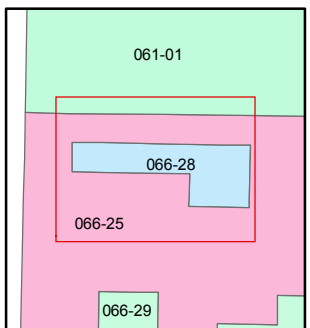
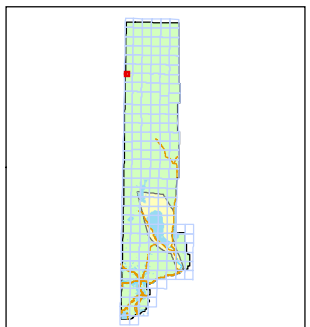
Assessor's Map Number
066-28

STATE OF NEVADA
WASHOE COUNTY
ASSESSOR'S OFFICE
Joshua G. Wilson, Assessor

1001 East Ninth Street
Building D
Reno, Nevada 89512
(775) 328-2231



1 inch = 600 feet



created by: TWT 1/04/2010

last updated: CFB 01/31/2012

area previously shown on map(s)

NOTE: This map was prepared for the use of the Washoe County Assessor for assessment and illustrative purposes only. It does not represent a survey of the premises. No liability is assumed as to the sufficiency or accuracy of the data delineated hereon.