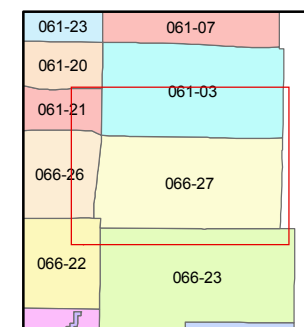
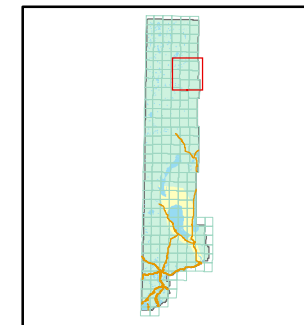


1 inch = 5,280 feet



created by: TWT 1/14/2010

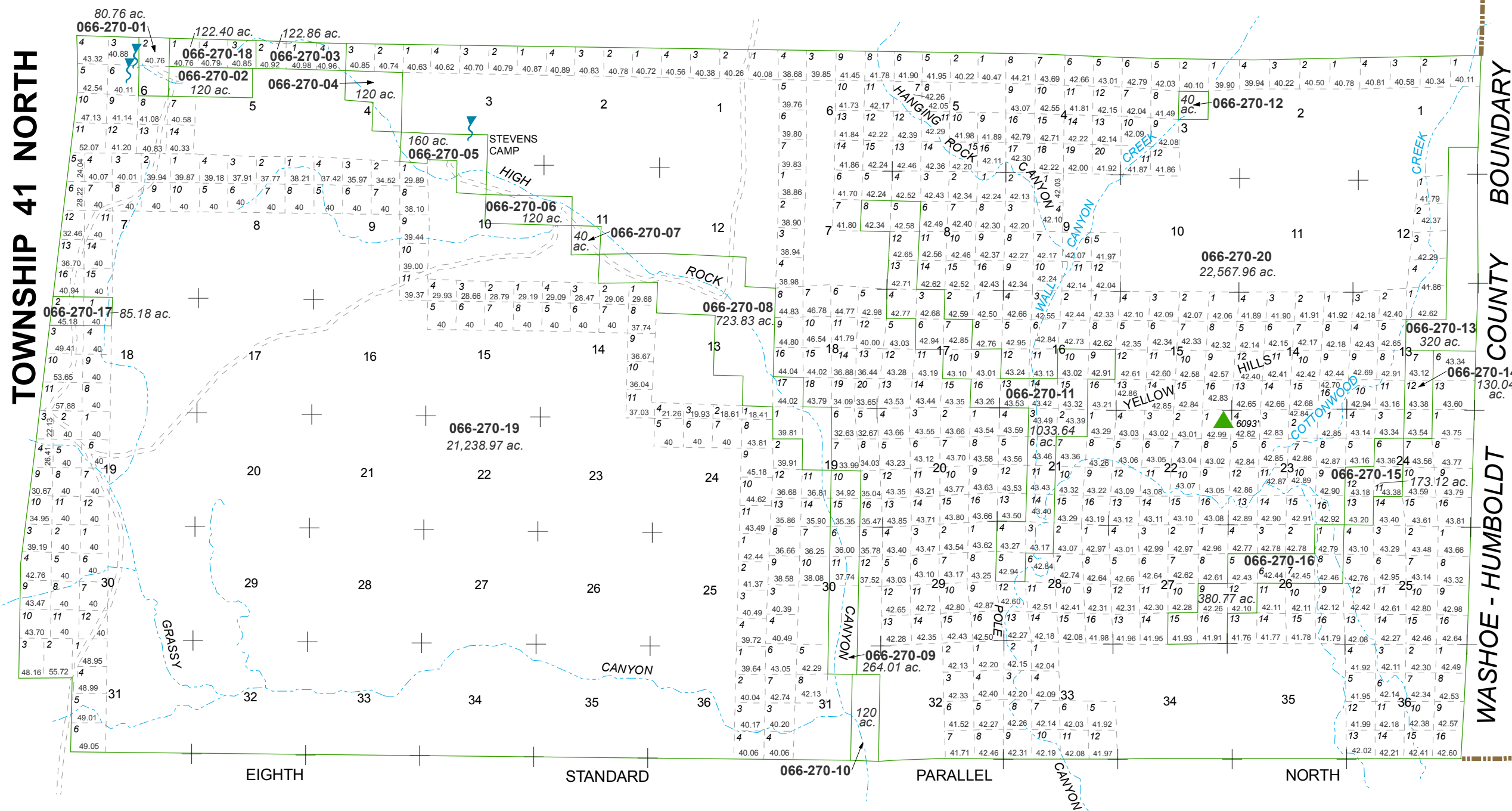
last updated: CFB 11/23/2010

area previously shown on map(s)

NOTE: This map was prepared for the use of the Washoe County Assessor for assessment and illustrative purposes only. It does not represent a survey of the premises. No liability is assumed as to the sufficiency or accuracy of the data delineated hereon.

RANGE 22 EAST

RANGE 23 EAST



TOWNSHIP 41 NORTH

WASHOE - HUMBOLDT COUNTY BOUNDARY

EIGHTH

STANDARD

066-270-10

PARALLEL

NORTH