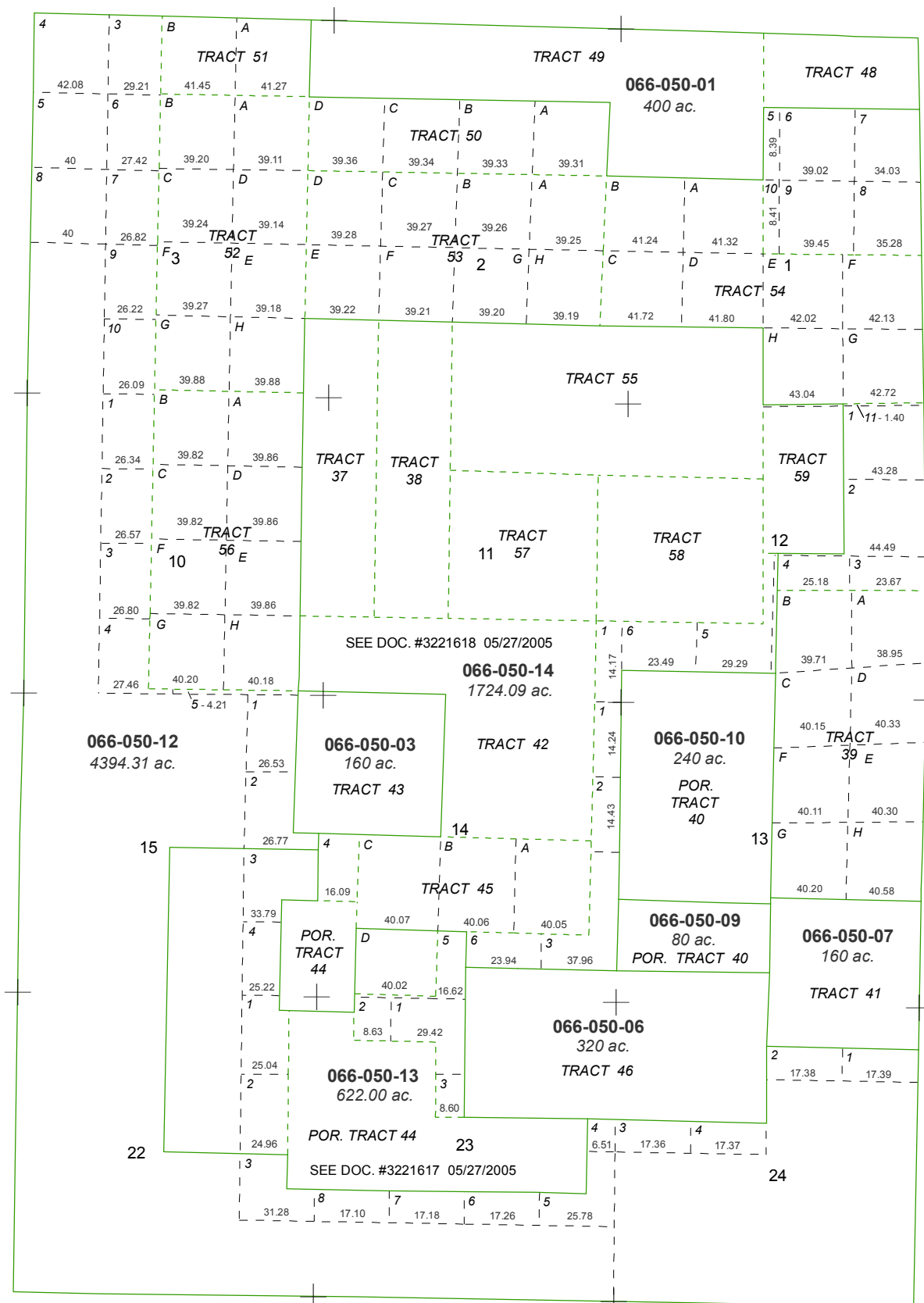


SECTIONS 1 - 3, 10 - 15 & 22 - 24 T36N - R18E



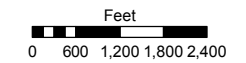
----- Boundary of re-surveyed government segregated tracts

Assessor's Map Number

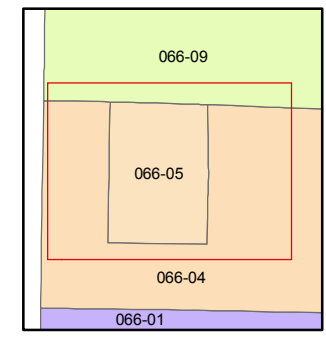
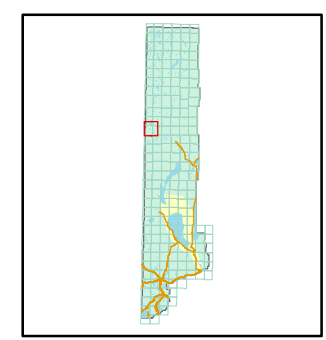
066-05

STATE OF NEVADA
WASHOE COUNTY
ASSESSOR'S OFFICE
 Joshua G. Wilson, Assessor

1001 East Ninth Street
 Building D
 Reno, Nevada 89512
 (775) 328-2231



1 inch = 2,640 feet



created by: TWT 03/05/2010

last updated: CFB 11/23/2010

area previously shown on map(s)

NOTE: This map was prepared for the use of the Washoe County Assessor for assessment and illustrative purposes only. It does not represent a survey of the premises. No liability is assumed as to the sufficiency or accuracy of the data delineated hereon.