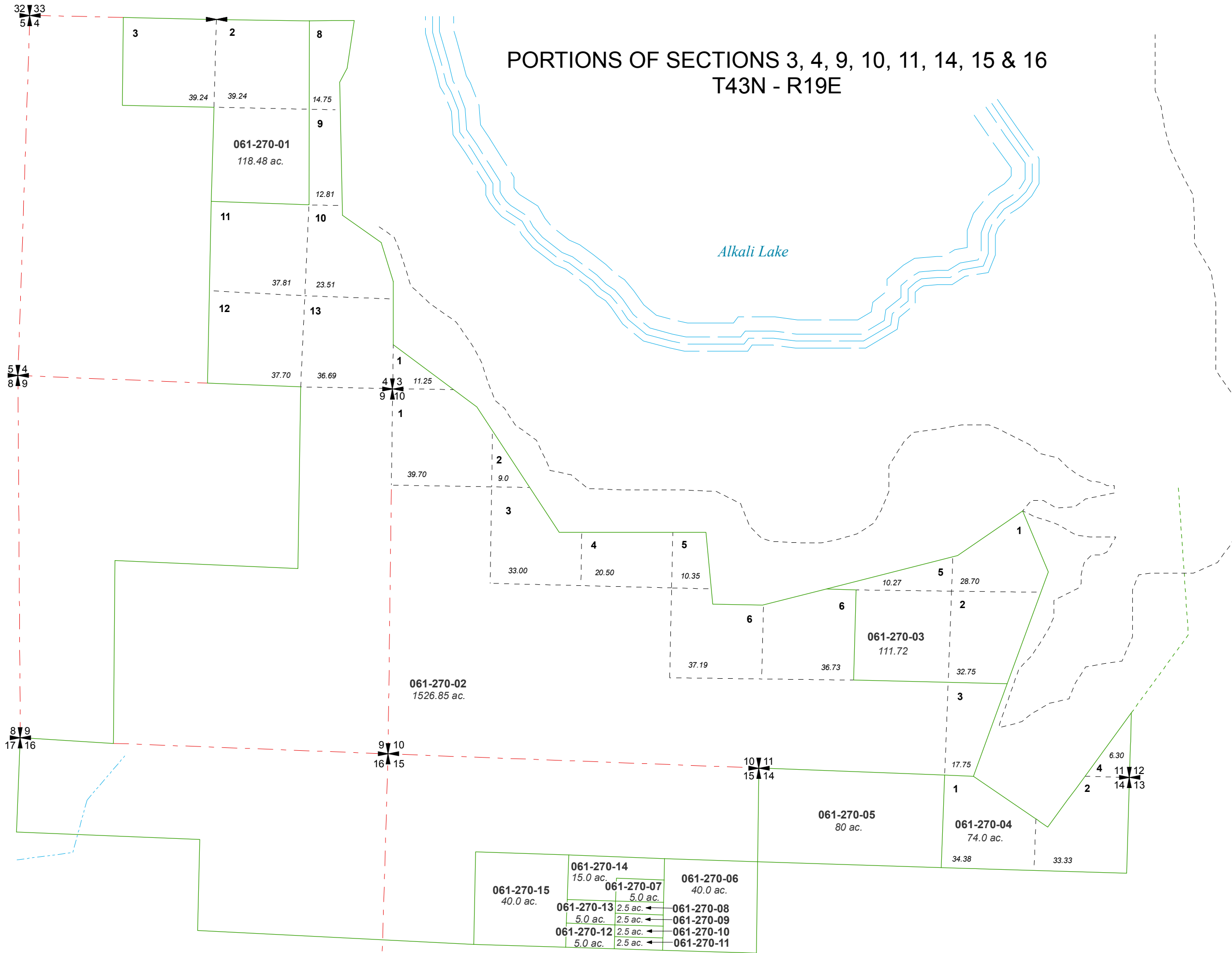


PORTIONS OF SECTIONS 3, 4, 9, 10, 11, 14, 15 & 16 T43N - R19E

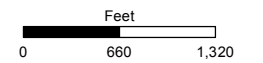


Assessor's Map Number

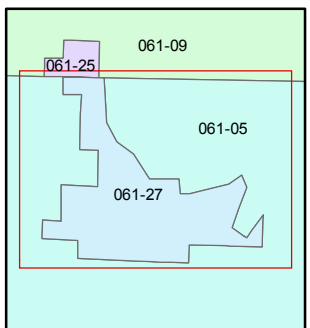
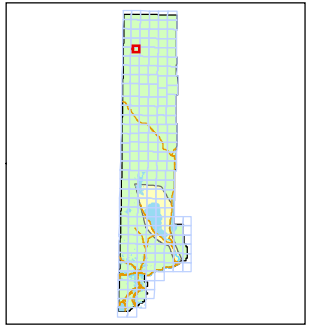
061-27

STATE OF NEVADA
WASHOE COUNTY
ASSESSOR'S OFFICE
 Joshua G. Wilson, Assessor

1001 East Ninth Street
 Building D
 Reno, Nevada 89512
 (775) 328-2231



1 inch = 1,320 feet



created by: CFB 02/05/2010

last updated: CFB 05/05/2014

area previously shown on map(s)
061-05

NOTE: This map was prepared for the use of the Washoe County Assessor for assessment and illustrative purposes only. It does not represent a survey of the premises. No liability is assumed as to the sufficiency or accuracy of the data delineated herein.