

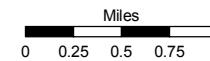
RANGE 22 EAST OREGON - NEVADA BORDER RANGE 23 EAST

Assessor's Map Number

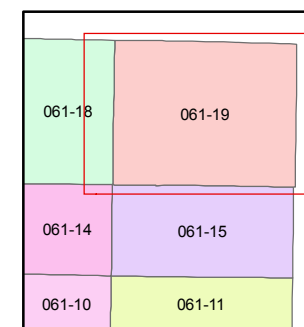
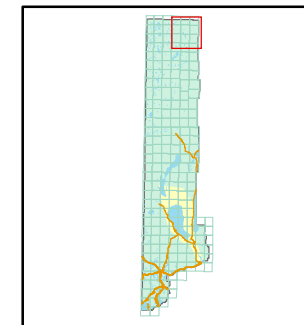
**061-19**

STATE OF NEVADA  
**WASHOE COUNTY**  
**ASSESSOR'S OFFICE**  
 Joshua G. Wilson, Assessor

1001 East Ninth Street  
 Building D  
 Reno, Nevada 89512  
 (775) 328-2231



1 inch = 5,280 feet

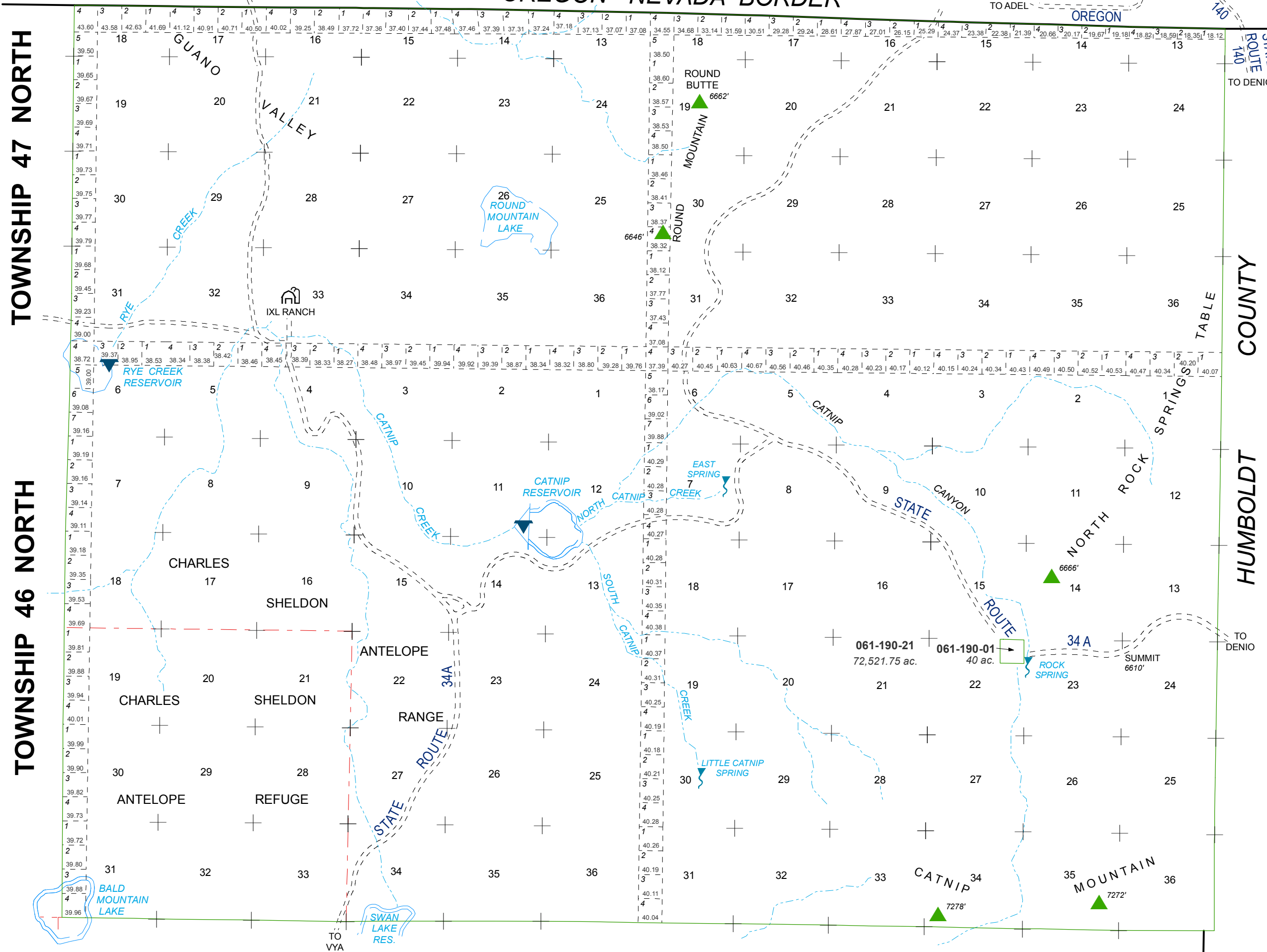


created by: TWT 5/11/2010

last updated: \_\_\_\_\_

area previously shown on map(s) \_\_\_\_\_

NOTE: This map was prepared for the use of the Washoe County Assessor for assessment and illustrative purposes only. It does not represent a survey of the premises. No liability is assumed as to the sufficiency or accuracy of the data delineated hereon.



TOWNSHIP 47 NORTH

TOWNSHIP 46 NORTH

HUMBOLDT COUNTY