

RANGE 18 EAST

OREGON - NEVADA BOUNDARY

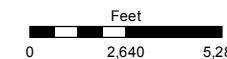
RANGE 19 EAST

Assessor's Map Number

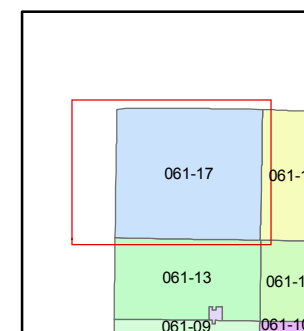
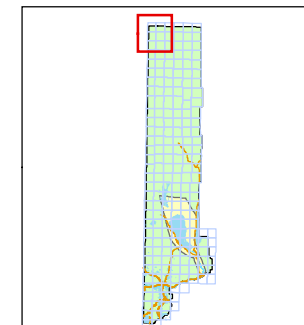
061-17

STATE OF NEVADA
WASHOE COUNTY
ASSESSOR'S OFFICE
Joshua G. Wilson, Assessor

1001 East Ninth Street
Building D
Reno, Nevada 89512
(775) 328-2231



1 inch = 5,280 feet

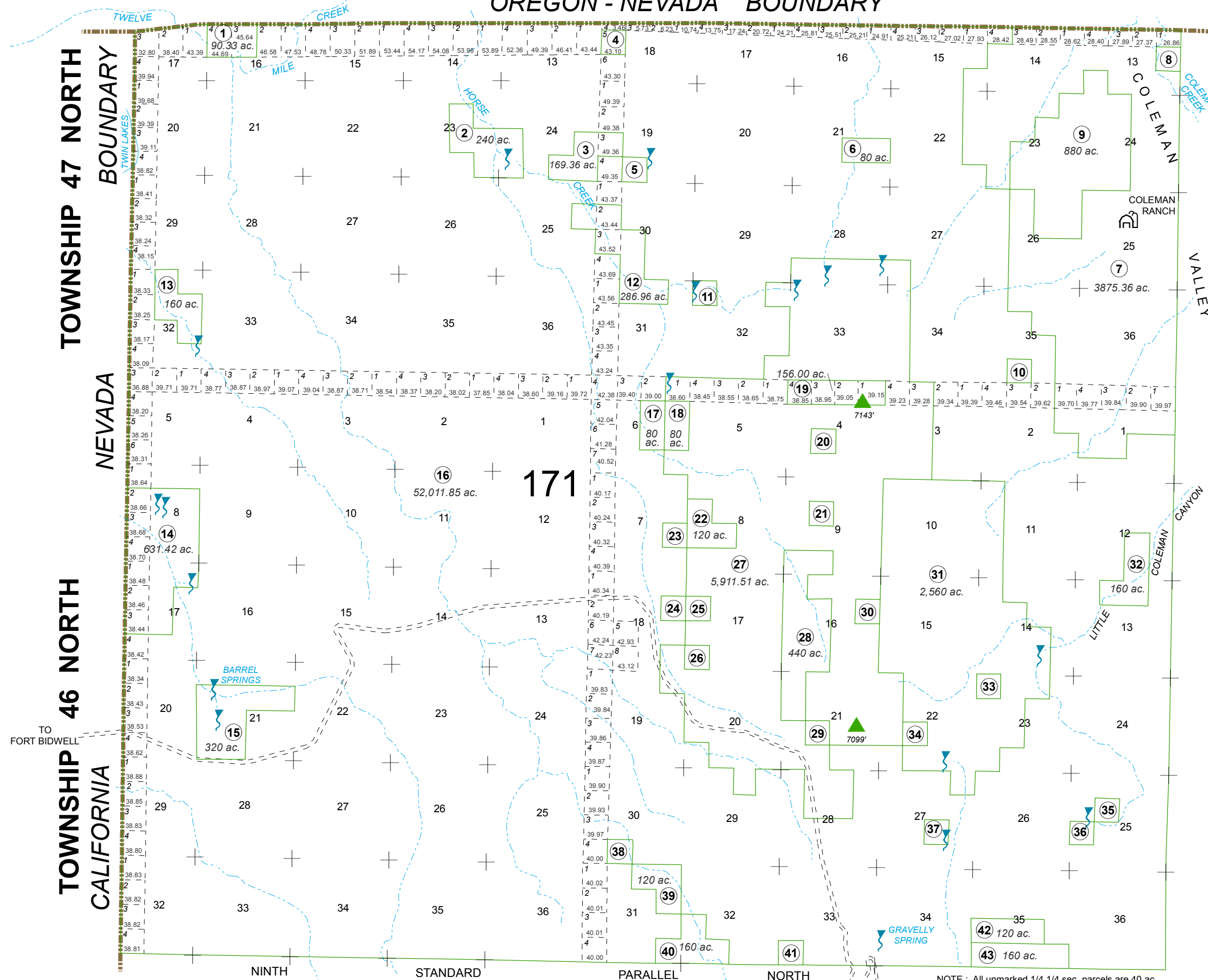


created by: TWT 5/5/2010

last updated: CFB 02/03/2012

area previously shown on map(s)

NOTE: This map was prepared for the use of the Washoe County Assessor for assessment and illustrative purposes only. It does not represent a survey of the premises. No liability is assumed as to the sufficiency or accuracy of the data delineated hereon.



TOWNSHIP 47 NORTH

BOUNDARY

NEVADA

TOWNSHIP 46 NORTH

CALIFORNIA

TO FORT BIDWELL

NINTH

STANDARD

PARALLEL

NORTH

TO VYA

NOTE: All unmarked 1/4 1/4 sec. parcels are 40 ac.