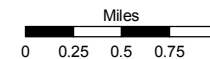


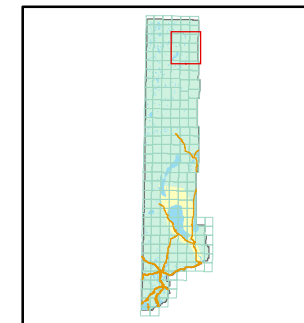
STATE OF NEVADA
WASHOE COUNTY
ASSESSOR'S OFFICE

Joshua G. Wilson, Assessor

1001 East Ninth Street
Building D
Reno, Nevada 89512
(775) 328-2231



1 inch = 5,280 feet



061-18	061-19
061-14	061-15
061-10	061-11
061-22	061-07
061-23	061-07
061-20	061-03



created by: TWT 5/21/2010

last updated: _____

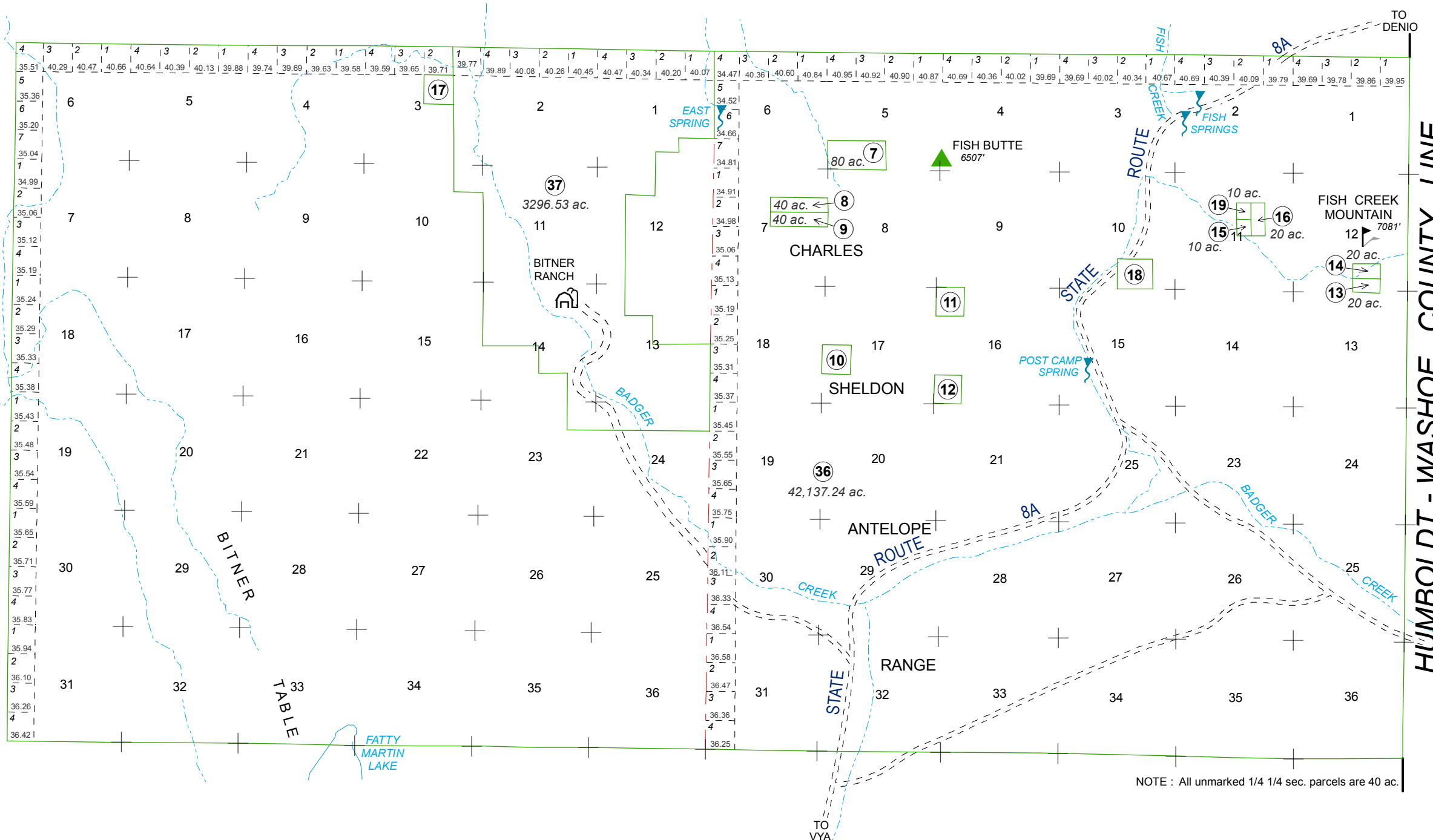
area previously shown on map(s) _____

NOTE: This map was prepared for the use of the Washoe County Assessor for assessment and illustrative purposes only. It does not represent a survey of the premises. No liability is assumed as to the sufficiency or accuracy of the data delineated hereon.

RANGE 22 EAST

RANGE 23 EAST

TOWNSHIP 44 NORTH



NOTE : All unmarked 1/4 1/4 sec. parcels are 40 ac.