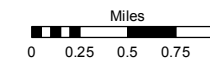
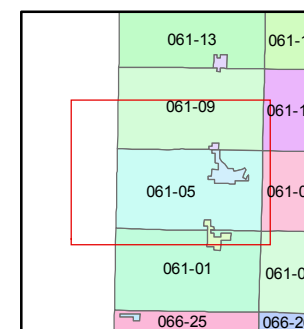
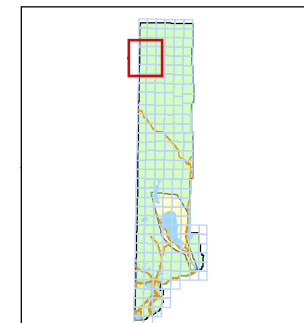


STATE OF NEVADA  
**WASHOE COUNTY**  
ASSESSOR'S OFFICE  
Michael E. Clark, Assessor

1001 East Ninth Street  
Building D  
Reno, Nevada 89512  
(775) 328-2231



1 inch = 5,280 feet



created by: CFB 02/04/2010

last updated: TWT 6/2/10 EMG 4/10/15

area previously shown on map(s)

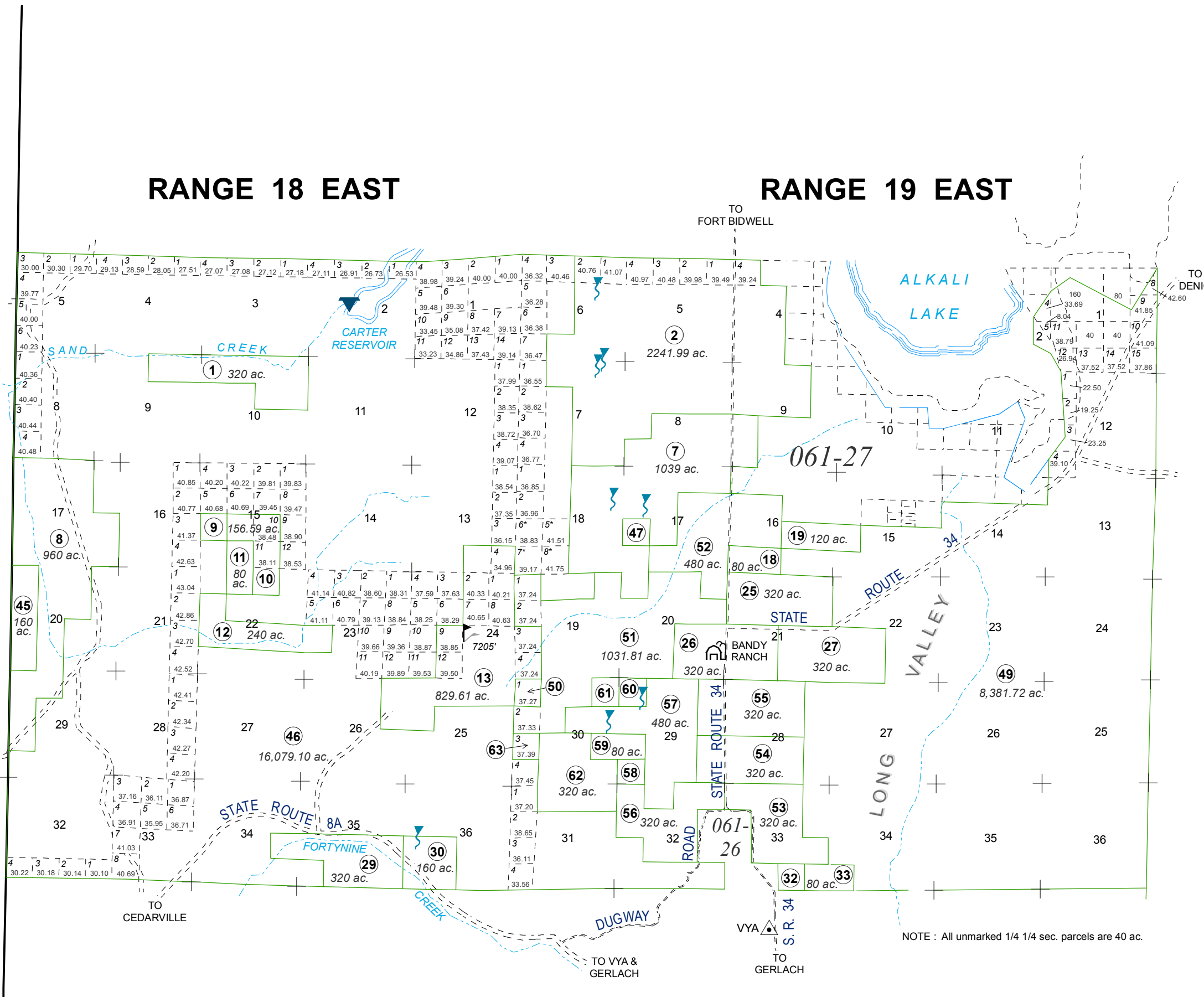
NOTE: This map was prepared for the use of the Washoe County Assessor for assessment and illustrative purposes only. It does not represent a survey of the premises. No liability is assumed as to the sufficiency or accuracy of the data delineated hereon.

**RANGE 18 EAST**

**RANGE 19 EAST**

**TOWNSHIP  
43 NORTH**

CALIFORNIA - NEVADA STATE LINE



NOTE: All unmarked 1/4 1/4 sec. parcels are 40 ac.