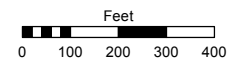


PORTION OF THE S 1/2 OF SECTION 3, T17N - R20E

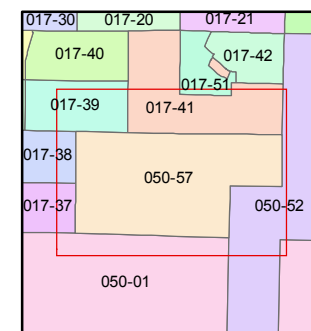
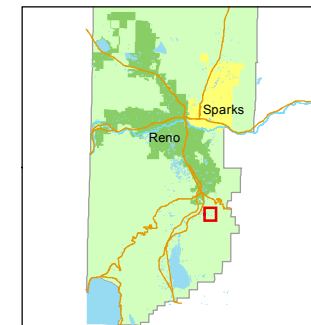
Assessor's Map Number
050-57

STATE OF NEVADA
WASHOE COUNTY
ASSESSOR'S OFFICE
Joshua G. Wilson, Assessor

1001 East Ninth Street
Building D
Reno, Nevada 89512
(775) 328-2231



1 inch = 400 feet



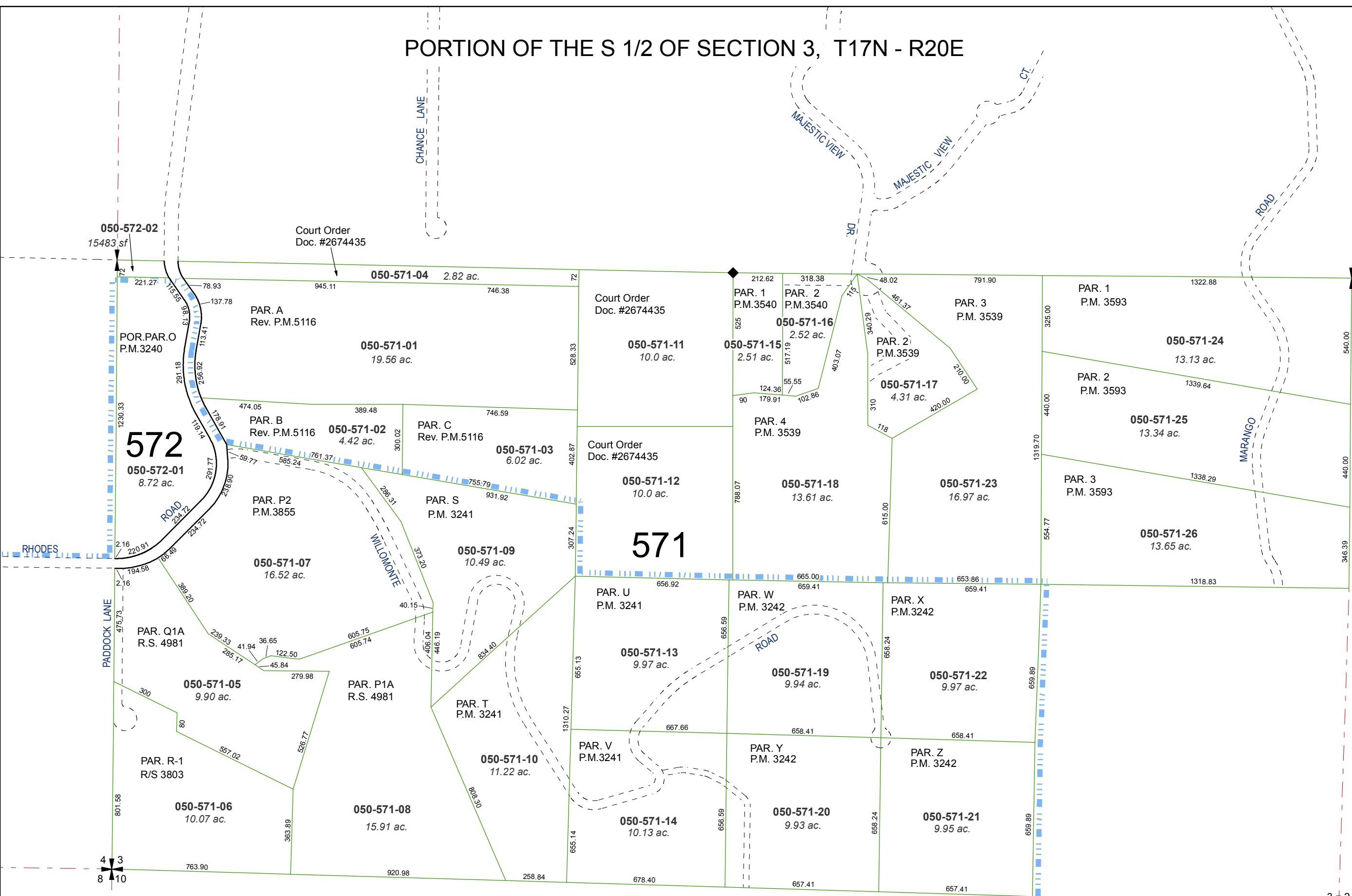
created by: CFB 03/24/2014

last updated: _____

area previously shown on map(s)

050-52

NOTE: This map was prepared for the use of the Washoe County Assessor for assessment and illustrative purposes only. It does not represent a survey of the premises. No liability is assumed as to the sufficiency or accuracy of the data delineated hereon.



MAP OF DIVISION INTO LARGE PARCELS NO. 158

050-572-02
15483 sf

Court Order
Doc. #2674435

Court Order
Doc. #2674435

Court Order
Doc. #2674435

572

571

4 3
8 10

3 2
10 11