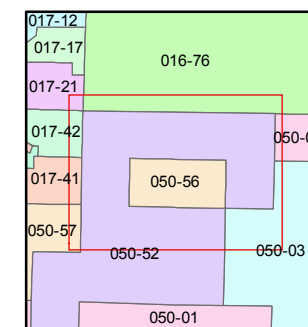
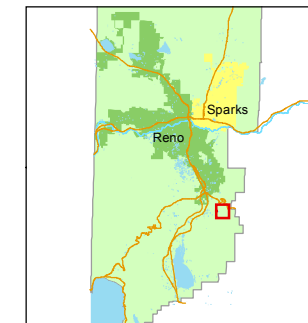


STATE OF NEVADA
WASHOE COUNTY
ASSESSOR'S OFFICE
Joshua G. Wilson, Assessor

1001 East Ninth Street
Building D
Reno, Nevada 89512
(775) 328-2231



1 inch = 400 feet



created by: CFB 03/28/2014

last updated: _____

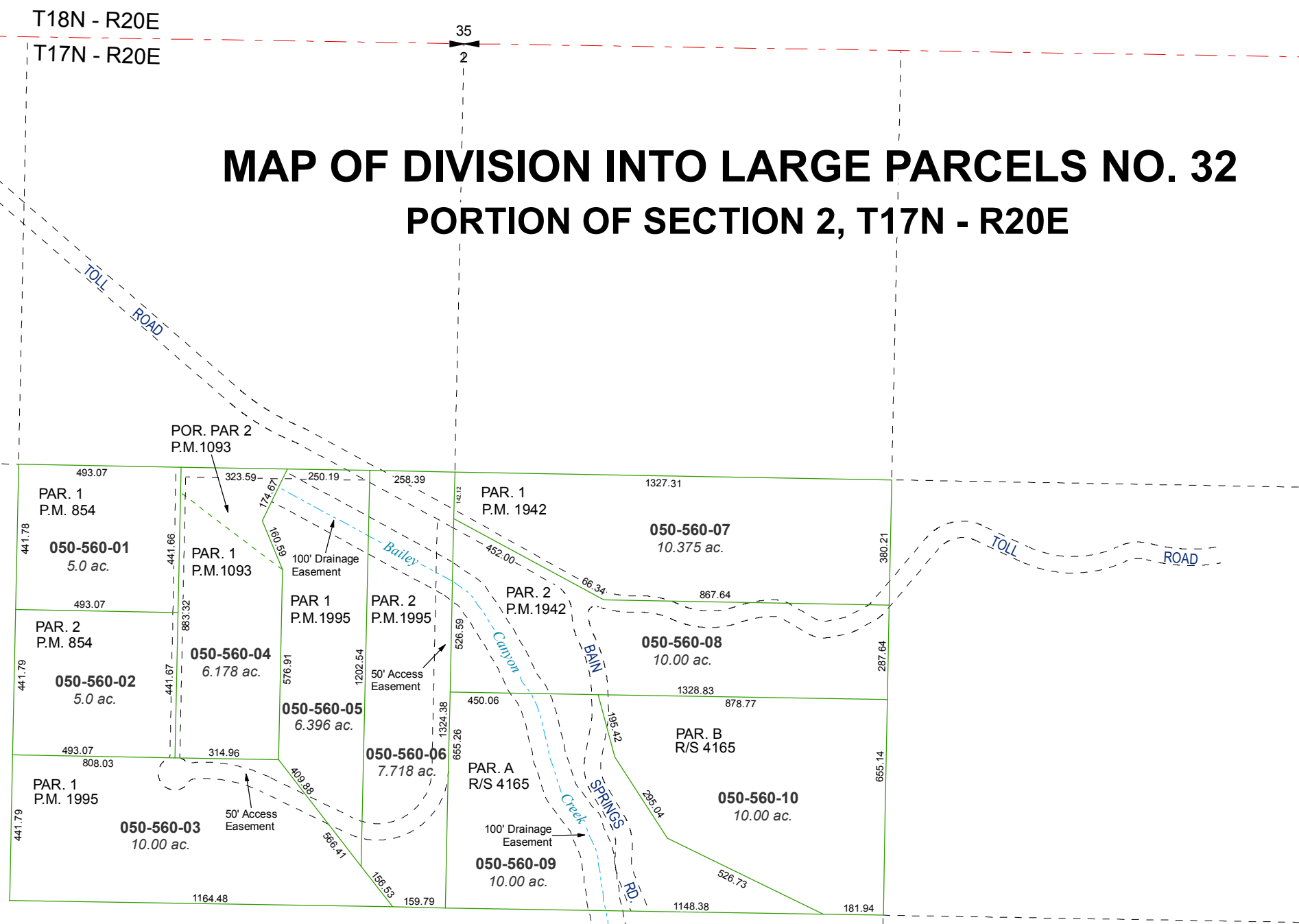
area previously shown on map(s)

050-52

NOTE: This map was prepared for the use of the Washoe County Assessor for assessment and illustrative purposes only. It does not represent a survey of the premises. No liability is assumed as to the sufficiency or accuracy of the data delineated hereon.

MAP OF DIVISION INTO LARGE PARCELS NO. 32

PORTION OF SECTION 2, T17N - R20E



34 35
3 2

T18N - R20E
T17N - R20E

35
2

35 36
2 1