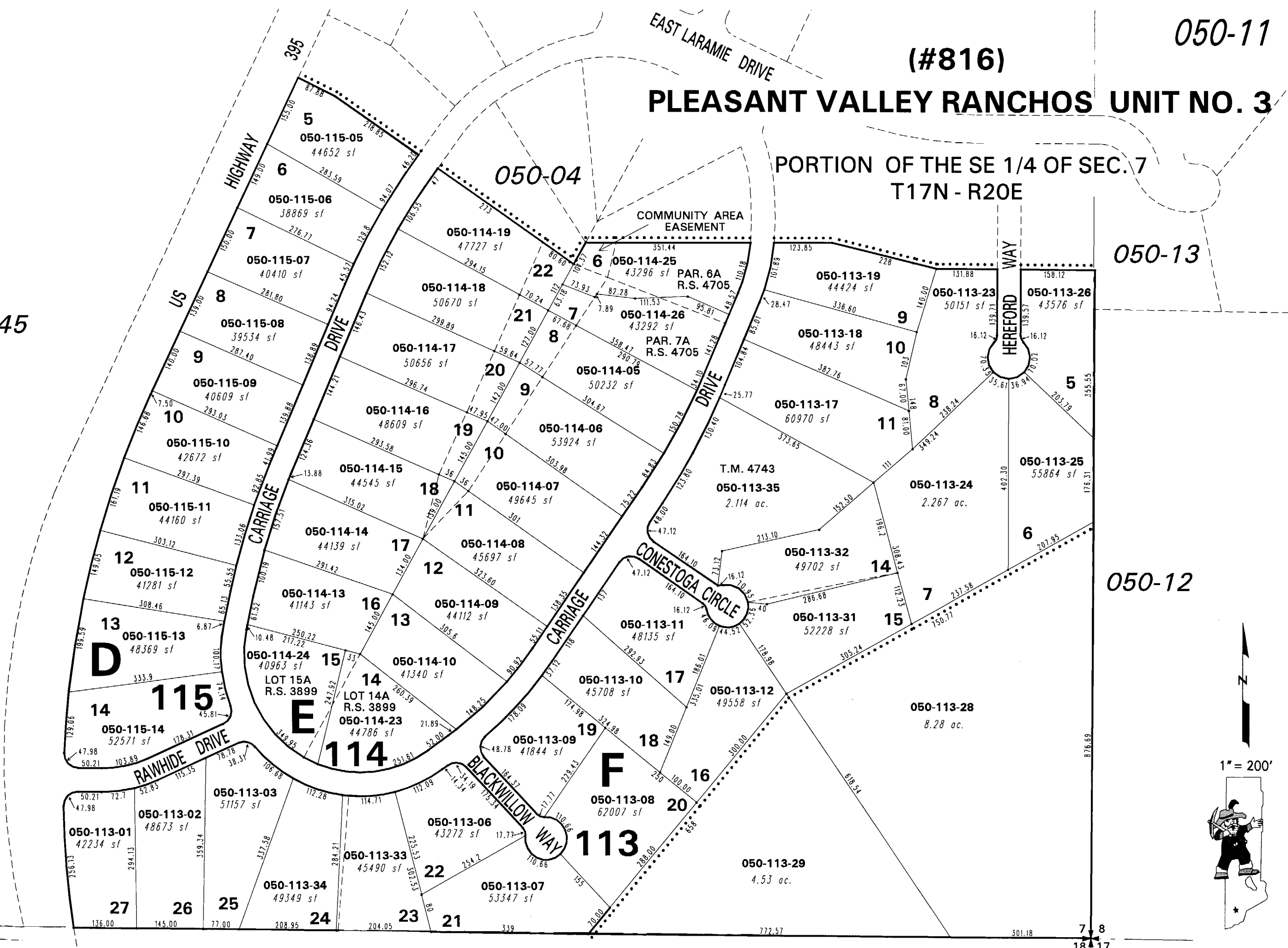


PLEASANT VALLEY RANCHOS UNIT NO. 3

PORTION OF THE SE 1/4 OF SEC. 7
T17N - R20E

BOOK 45



NOTE: This map is prepared for the use of the Washoe County Assessor for assessment and illustrative purposes only. It does not represent a survey of the premises. No liability is assumed as to the sufficiency or the accuracy of the data delineated hereon.

050-15
Office of Washoe County Assessor, Nevada - Joshua G. Wilson

This area previously shown on 050-11

NOTE: Areas of parcels which are less than 2 acres are shown in square feet.

Drawn by JL 03/21/07
Revised