

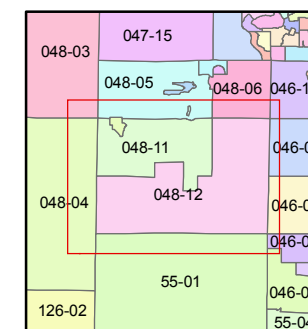
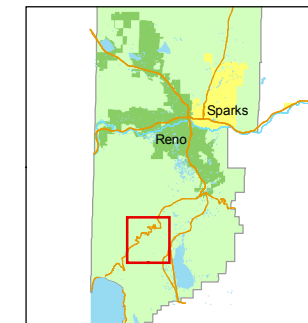
STATE OF NEVADA
WASHOE COUNTY
ASSESSOR'S OFFICE
Joshua G. Wilson, Assessor

1001 East Ninth Street
Building D
Reno, Nevada 89512
(775) 328-2231



Feet
0 165330 660 990 1,320

1 inch = 1,320 feet



created by: TWT 10/14/2009

last updated: _____

area previously shown on map(s)

NOTE: This map was prepared for the use of the Washoe County Assessor for assessment and illustrative purposes only. It does not represent a survey of the premises. No liability is assumed as to the sufficiency or accuracy of the data delineated hereon.

SECTIONS 21, 28 & 30 AND PORTIONS OF SECTIONS 20 & 29 T17N - R19E

