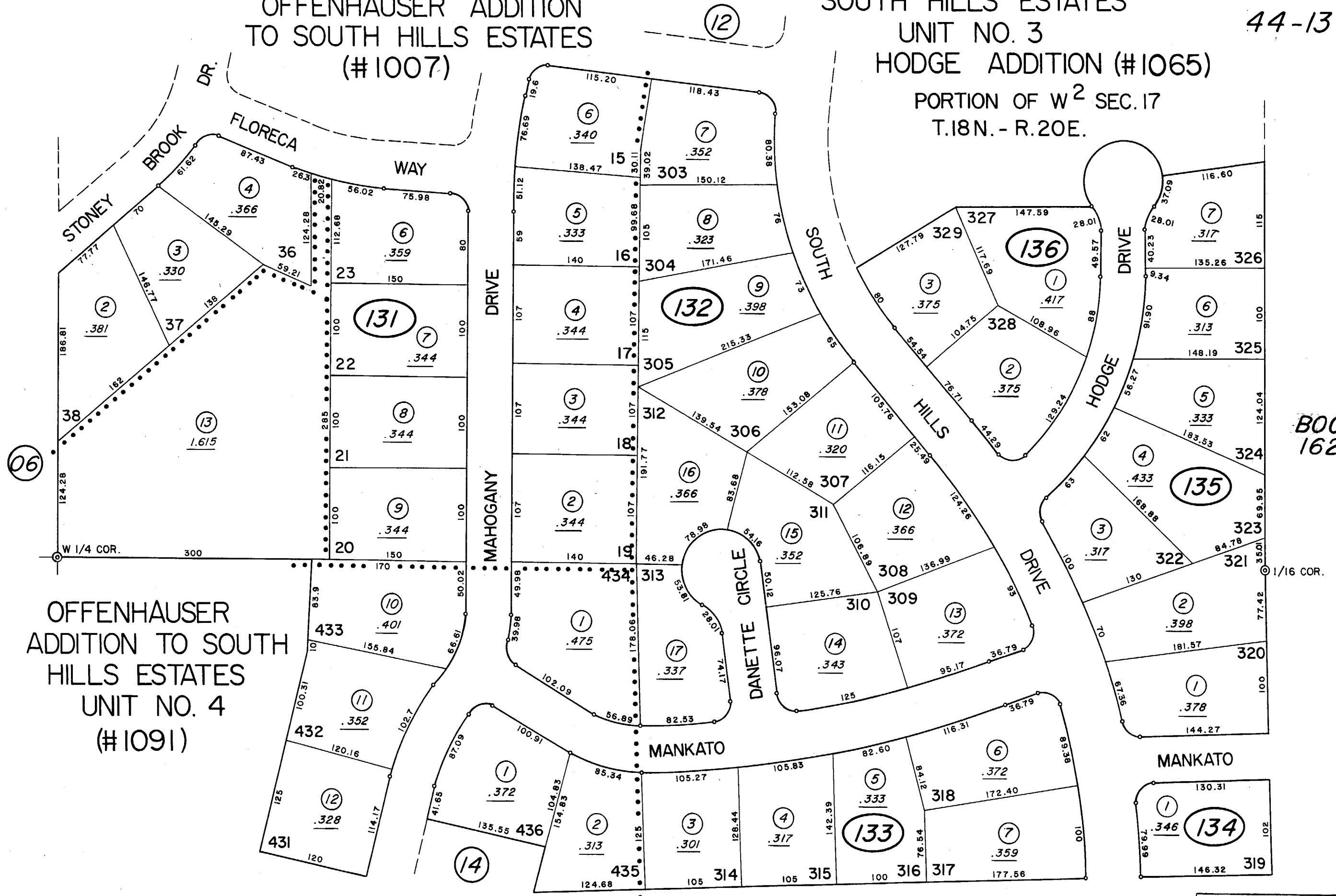


OFFENHAUSER ADDITION
TO SOUTH HILLS ESTATES
(#1007)

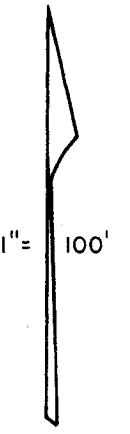
SOUTH HILLS ESTATES
UNIT NO. 3
HODGE ADDITION (#1065)
PORTION OF W² SEC. 17
T.18N. - R.20E.

44-13



BOOK
162

OFFENHAUSER
ADDITION TO SOUTH
HILLS ESTATES
UNIT NO. 4
(#1091)



NOTE: This Map is prepared for the use of the Washoe County Assessor for Assessment and illustrative purposes only, it does not represent survey of the premises. No liability is assumed as to the sufficiency or accuracy of the data delineated hereon.

Assessor's Map County of Washoe, Nevada
NOTE - ASSESSOR'S BLOCK NUMBERS SHOWN IN ELLIPSES
ASSESSOR'S PARCEL NUMBERS SHOWN IN CIRCLES

drawn by G.S. 2/81
revised 5/95 TWT 1/31/07
superseded