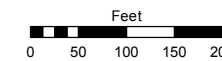
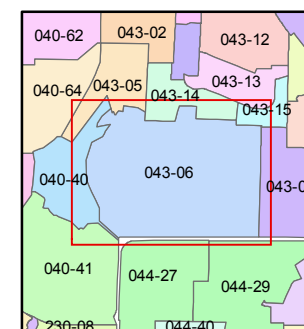
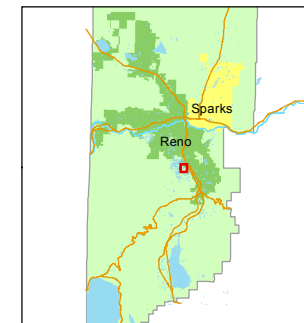


STATE OF NEVADA
WASHOE COUNTY
ASSESSOR'S OFFICE
Michael E. Clark, Assessor

1001 East Ninth Street
Building D
Reno, Nevada 89512
(775) 328-2231



1 inch = 200 feet



created by: NLH 10/28/2009

last updated: EMG 9/14/15

area previously shown on map(s)

NOTE: This map was prepared for the use of the Washoe County Assessor for assessment and illustrative purposes only. It does not represent a survey of the premises. No liability is assumed as to the sufficiency or accuracy of the data delineated hereon.

POR. SEC'S. 1 & 12, T18N - R19E
POR. SEC'S. 6 & 7, T18N - R20E

BOOK 40

BOOK 44

043-05

043-14

043-15

043-07

061

062

043-061-05
21.975 ac.

043-061-07
2.40 ac.

043-061-08
2.40 ac.

043-061-01
5.447 ac.

043-061-02
3.4 ac.

043-061-04
5.791 ac.

043-061-03
3.5 ac.

PAR. 3
P.M. 942

043-062-03
2.50 ac.

PAR. 1
P.M. 1587

043-062-16
2.5 ac.

PAR. 2
P.M. 1587

043-062-17
2.5 ac.

PAR. 4
P.M. 931

043-062-01
2.50 ac.

PAR. 1
R.S. 4293

043-062-06
4.628 ac.

PAR. 1
P.M. 942

043-062-05
2.50 ac.

PAR. 2
P.M. 942

043-062-04
2.50 ac.

043-062-20
5.16 ac.

043-062-08
4.001 ac.

PAR. A2
R.S. 5659

043-062-22
2.539 ac.

043-062-15
2.09 ac.

043-062-14
2.0 ac.

PAR. A1
R.S. 5659

043-062-21
2.917 ac.

043-062-13
2.51 ac.

043-062-12
3.0 ac.

PAR. 1
P.M. 2479

043-062-18
3.8588 ac.

PAR. 2
P.M. 2479

043-062-19
2.5001 ac.

043-062-12
3.0 ac.



R. 18 E.
R. 19 E.
Road Easement Per Doc. #1354104

MILE CIRCLE DRIVE

MILE CIRCLE DRIVE
Reno City Limits

MILE CIRCLE DRIVE

HOLCOMB RANCH LANE