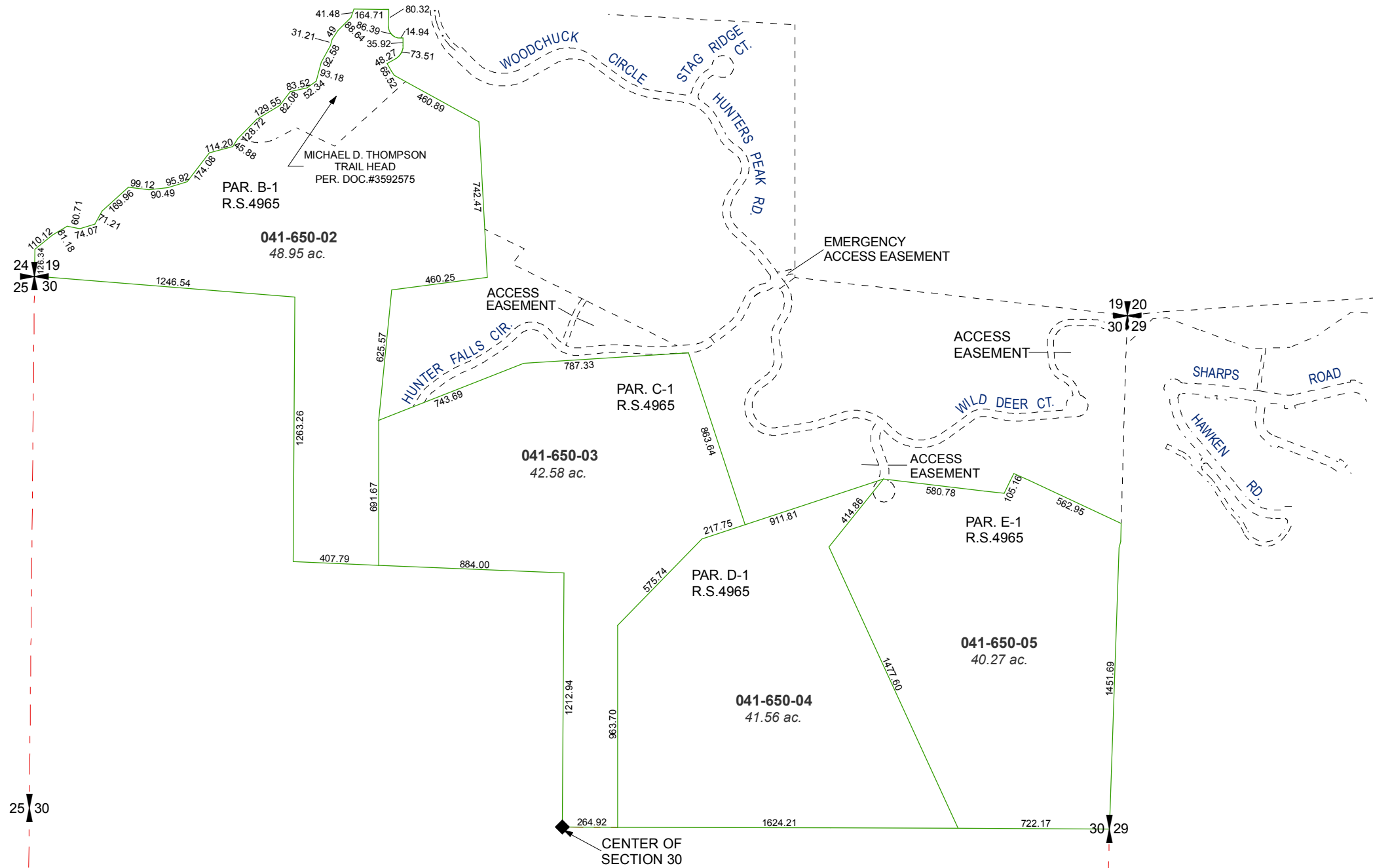


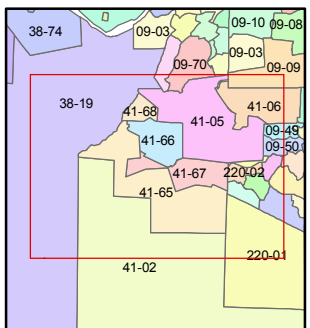
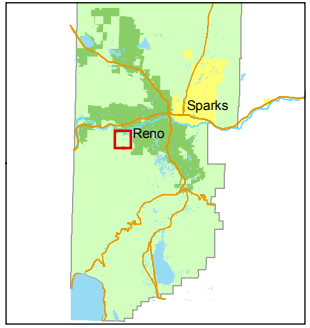
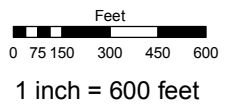
PORTIONS OF THE S 1/2 OF SECTION 19 & THE N 1/2 OF SECTION 30, T19N R19E



Assessor's Map Number
041-65

STATE OF NEVADA
WASHOE COUNTY
ASSESSOR'S OFFICE
Joshua G. Wilson, Assessor

1001 East Ninth Street
Building D
Reno, Nevada 89512
(775) 328-2231



created by: CFB 10/28/2009

last updated: _____

area previously shown on map(s)
041-05

NOTE: This map was prepared for the use of the Washoe County Assessor for assessment and illustrative purposes only. It does not represent a survey of the premises. No liability is assumed as to the sufficiency or accuracy of the data delineated hereon.