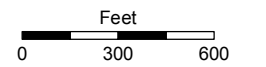
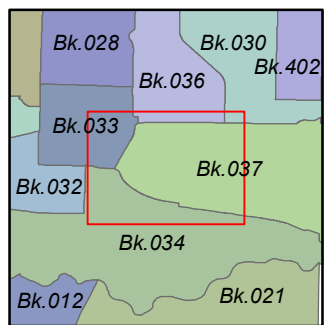
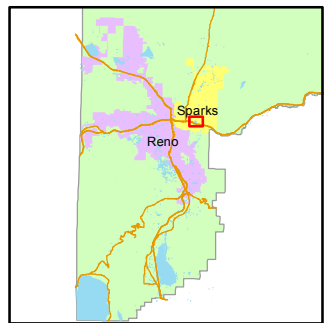


STATE OF NEVADA  
**WASHOE COUNTY**  
**ASSESSOR'S OFFICE**  
 Michael E. Clark, Assessor

1001 East Ninth Street  
 Building D  
 Reno, Nevada 89512  
 (775) 328-2231



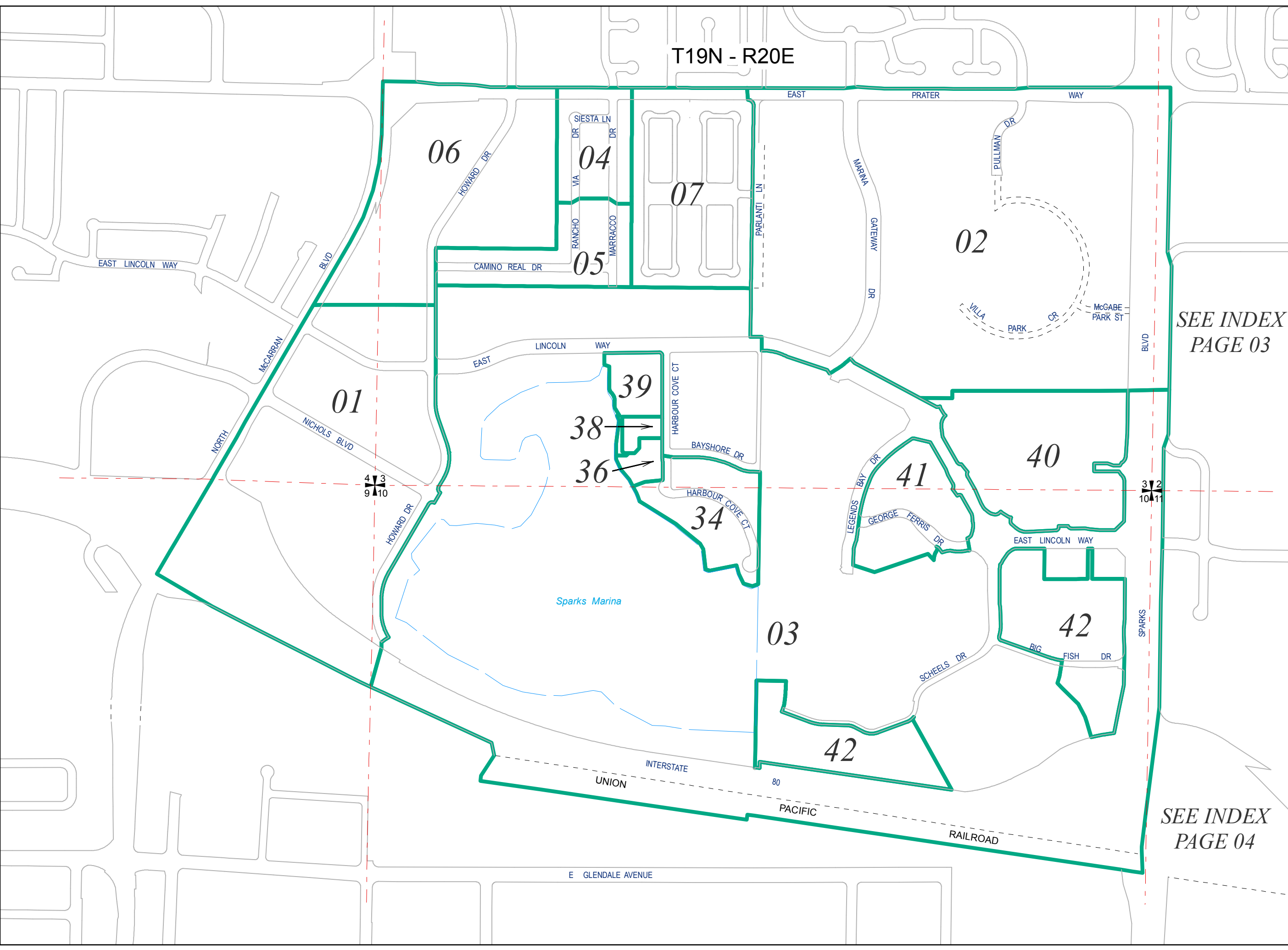
1 inch = 600 feet



created by: NLH 4/13/2011  
 last updated: EMG 2/22/16 EMG 3/4/16

NOTE: This map was prepared for the use of the Washoe County Assessor for assessment and illustrative purposes only. It does not represent a survey of the premises. No liability is assumed as to the sufficiency or accuracy of the data delineated herein.

T19N - R20E



SEE INDEX  
 PAGE 03

SEE INDEX  
 PAGE 04

4 3  
 9 10

3 2  
 10 11