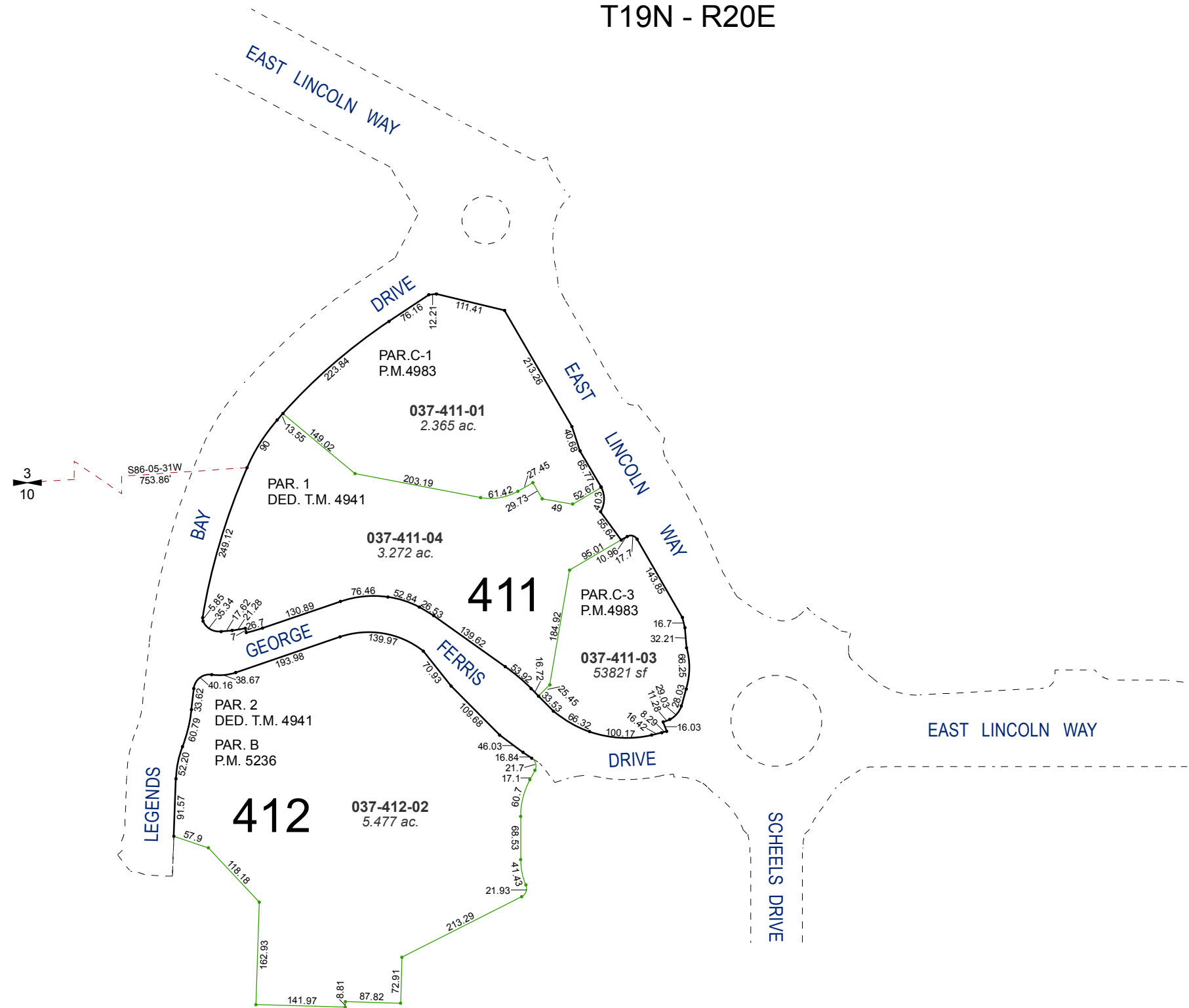


PORTIONS OF THE SE ¼ OF SEC. 3
AND OF THE NE ¼ OF SEC. 10
T19N - R20E

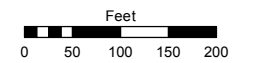


Assessor's Map Number

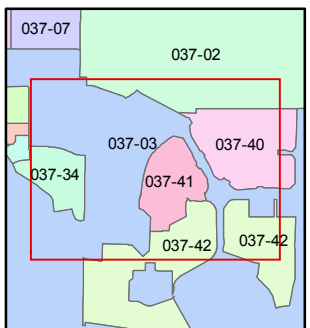
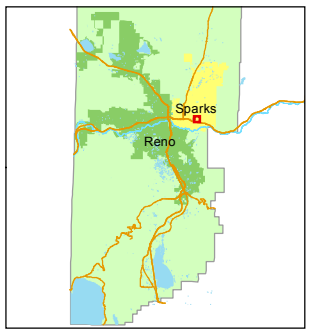
037-41

STATE OF NEVADA
WASHOE COUNTY
ASSESSOR'S OFFICE
Michael E. Clark, Assessor

1001 East Ninth Street
Building D
Reno, Nevada 89512
(775) 328-2231



1 inch = 200 feet



created by: NLH 7/06/2010

last updated: EMG 6/23/16

area previously shown on map(s)
037-03

NOTE: This map was prepared for the use of the Washoe County Assessor for assessment and illustrative purposes only. It does not represent a survey of the premises. No liability is assumed as to the sufficiency or accuracy of the data delineated hereon.