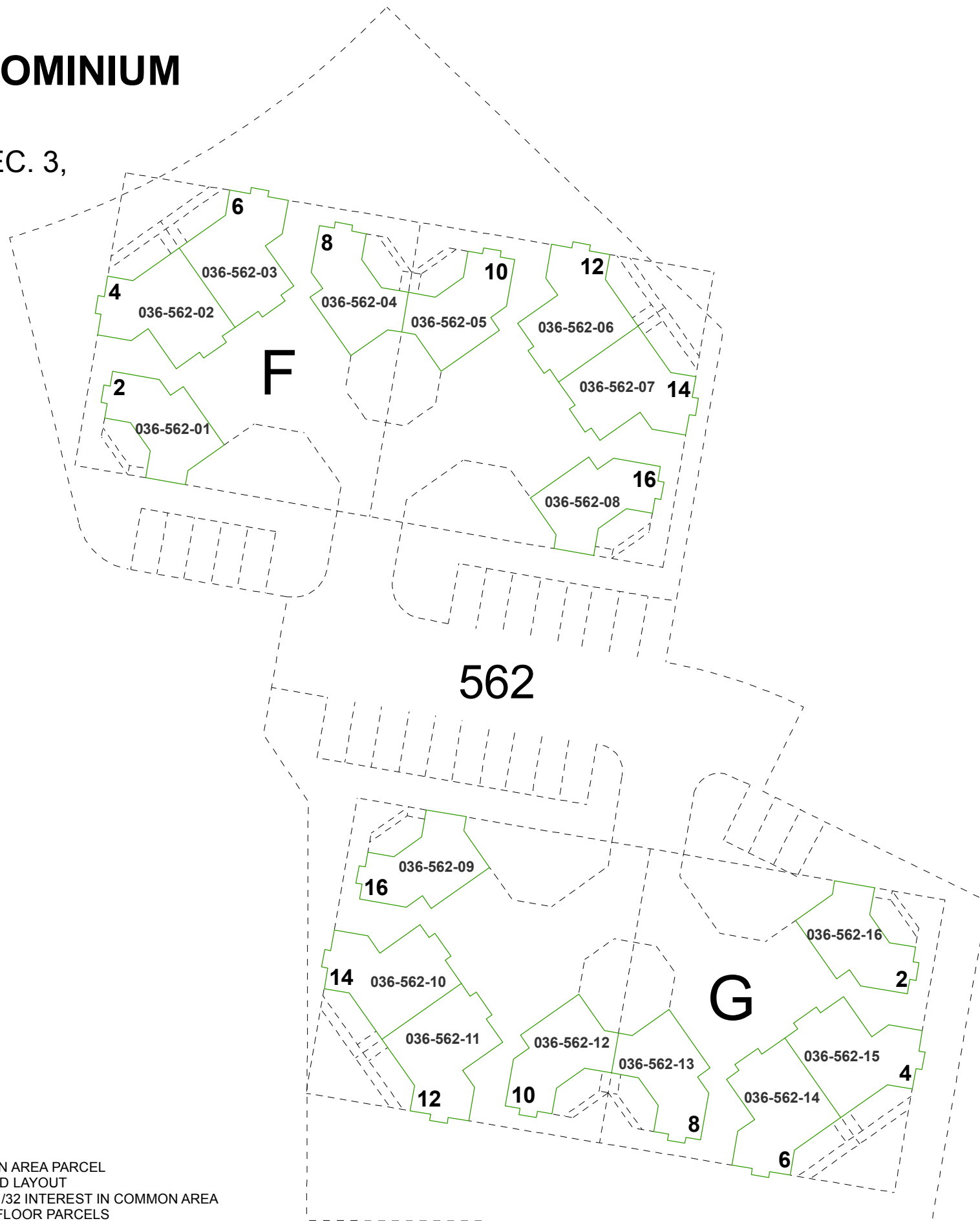


(#2333)
AMENDED WILLOW CREEK CONDOMINIUM
UNIT NO. 3

A POR. OF THE S 1/2 OF THE NE 1/4 OF SEC. 3,
 T19N - R20E

SECOND FLOOR



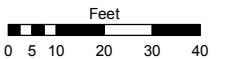
NOTES:
 SEE PAGE 036-56 FOR COMMON AREA PARCEL
 AND TYPICAL UNIT DETAILS AND LAYOUT
 TO EACH UNIT AN UNDIVIDED 1/32 INTEREST IN COMMON AREA
 SEE PG. 036-56-S1 FOR FIRST FLOOR PARCELS

Assessor's Map Number

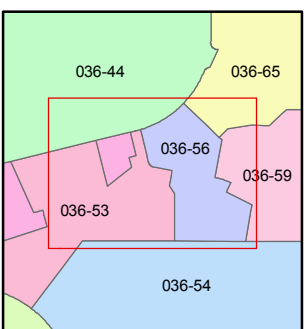
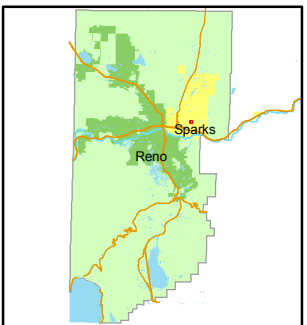
036-56-S2

STATE OF NEVADA
WASHOE COUNTY
ASSESSOR'S OFFICE
 Joshua G. Wilson, Assessor

1001 East Ninth Street
 Building D
 Reno, Nevada 89512
 (775) 328-2231



1 inch = 40 feet



created by: NLH 6/24/2010

last updated: _____

area previously shown on map(s)

NOTE: This map was prepared for the use of the Washoe County Assessor for assessment and illustrative purposes only. It does not represent a survey of the premises. No liability is assumed as to the sufficiency or accuracy of the data delineated hereon.