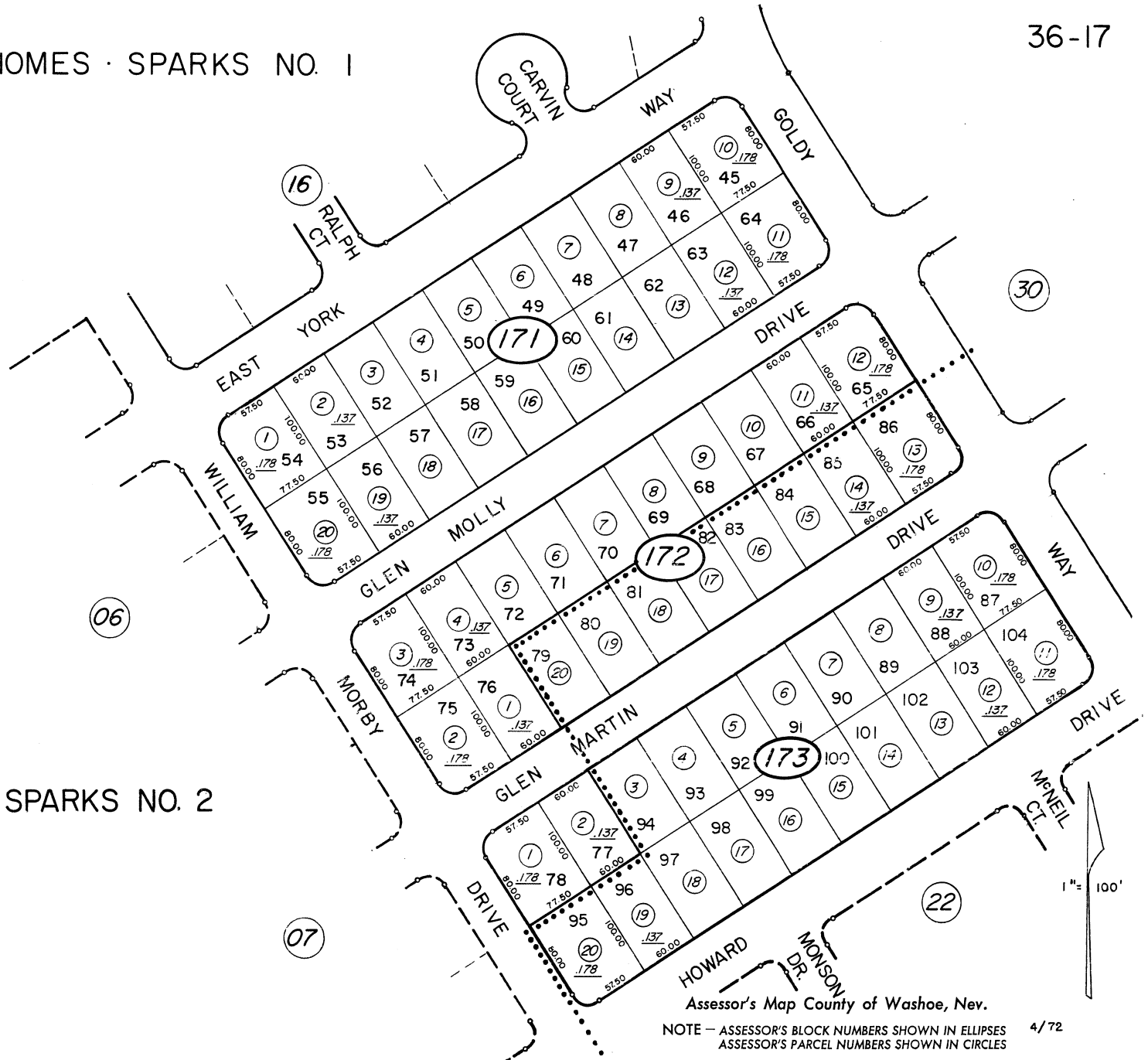


LEWIS HOMES · SPARKS NO. 1



LEWIS HOMES · SPARKS NO. 2

NOTE: This Map is prepared for the use of the Washoe County Assessor, for Assessment and Illustrative purposes only. It does not represent survey of the Premises. No Liability is assumed as to the sufficiency or accuracy of the Data delineated hereon.

Assessor's Map County of Washoe, Nev.

NOTE - ASSESSOR'S BLOCK NUMBERS SHOWN IN ELLIPSES
ASSESSOR'S PARCEL NUMBERS SHOWN IN CIRCLES