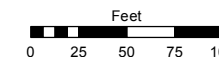
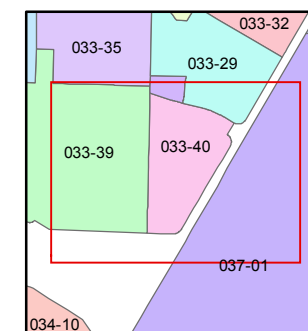
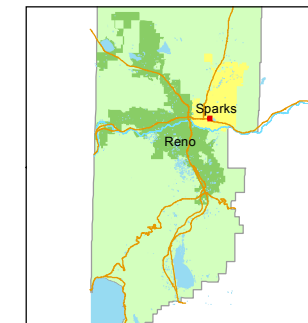


STATE OF NEVADA
WASHOE COUNTY
ASSESSOR'S OFFICE
Joshua G. Wilson, Assessor

1001 East Ninth Street
Building D
Reno, Nevada 89512
(775) 328-2231



1 inch = 100 feet

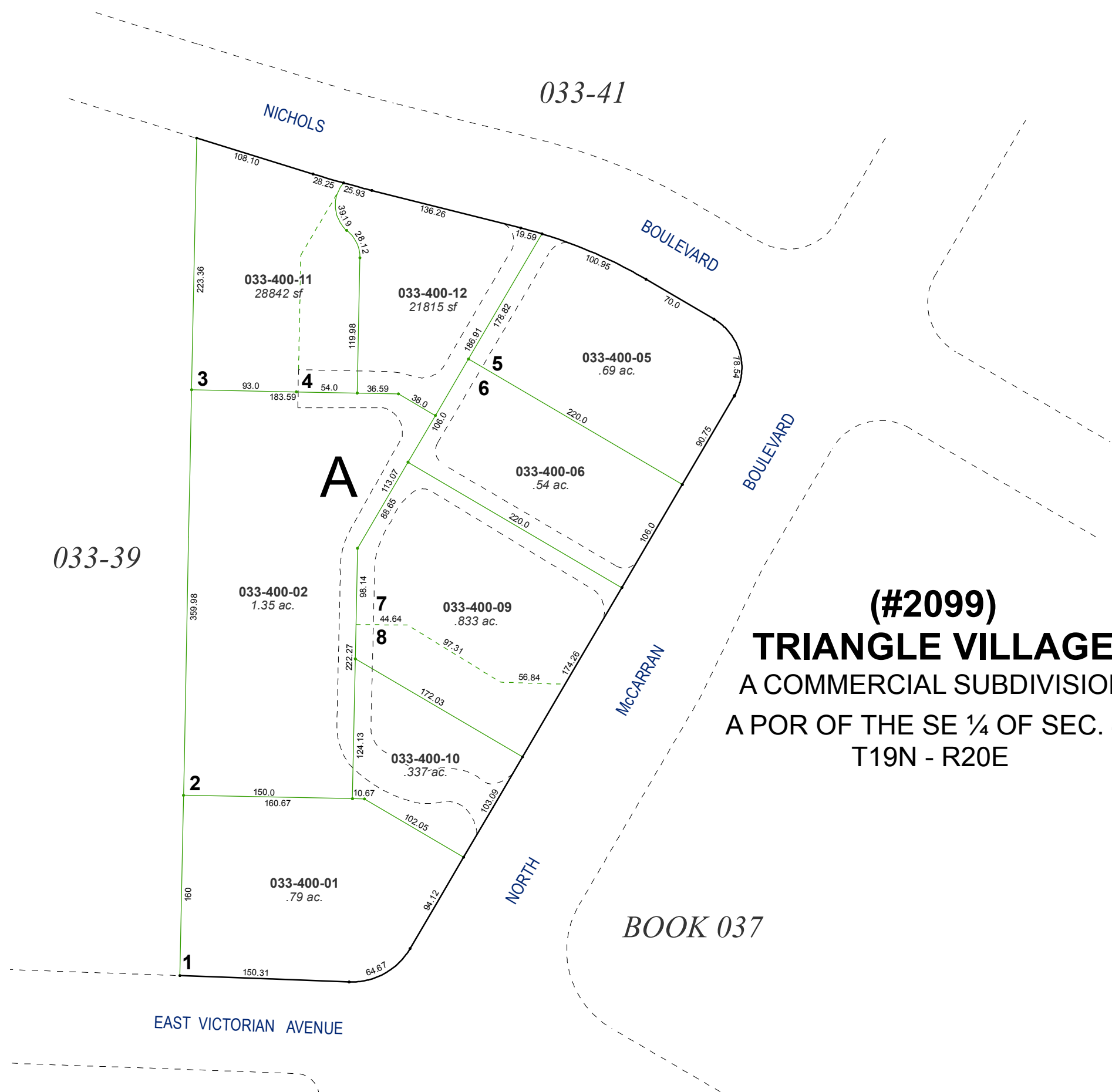


created by: NLH 6/14/2010

last updated: EMG 10/03/14

area previously shown on map(s)

NOTE: This map was prepared for the use of the Washoe County Assessor for assessment and illustrative purposes only. It does not represent a survey of the premises. No liability is assumed as to the sufficiency or accuracy of the data delineated hereon.



(#2099)
TRIANGLE VILLAGE
A COMMERCIAL SUBDIVISION
A POR OF THE SE ¼ OF SEC. 4,
T19N - R20E

BOOK 037

033-39

033-41

EAST VICTORIAN AVENUE

NICHOLS

BOULEVARD

BOULEVARD

McCARRAN

NORTH

033-400-11
28842 sf

033-400-12
21815 sf

033-400-05
.69 ac.

033-400-06
.54 ac.

033-400-02
1.35 ac.

033-400-09
.833 ac.

033-400-10
.337 ac.

033-400-01
.79 ac.

3

4

5

6

A

7

8

2

1