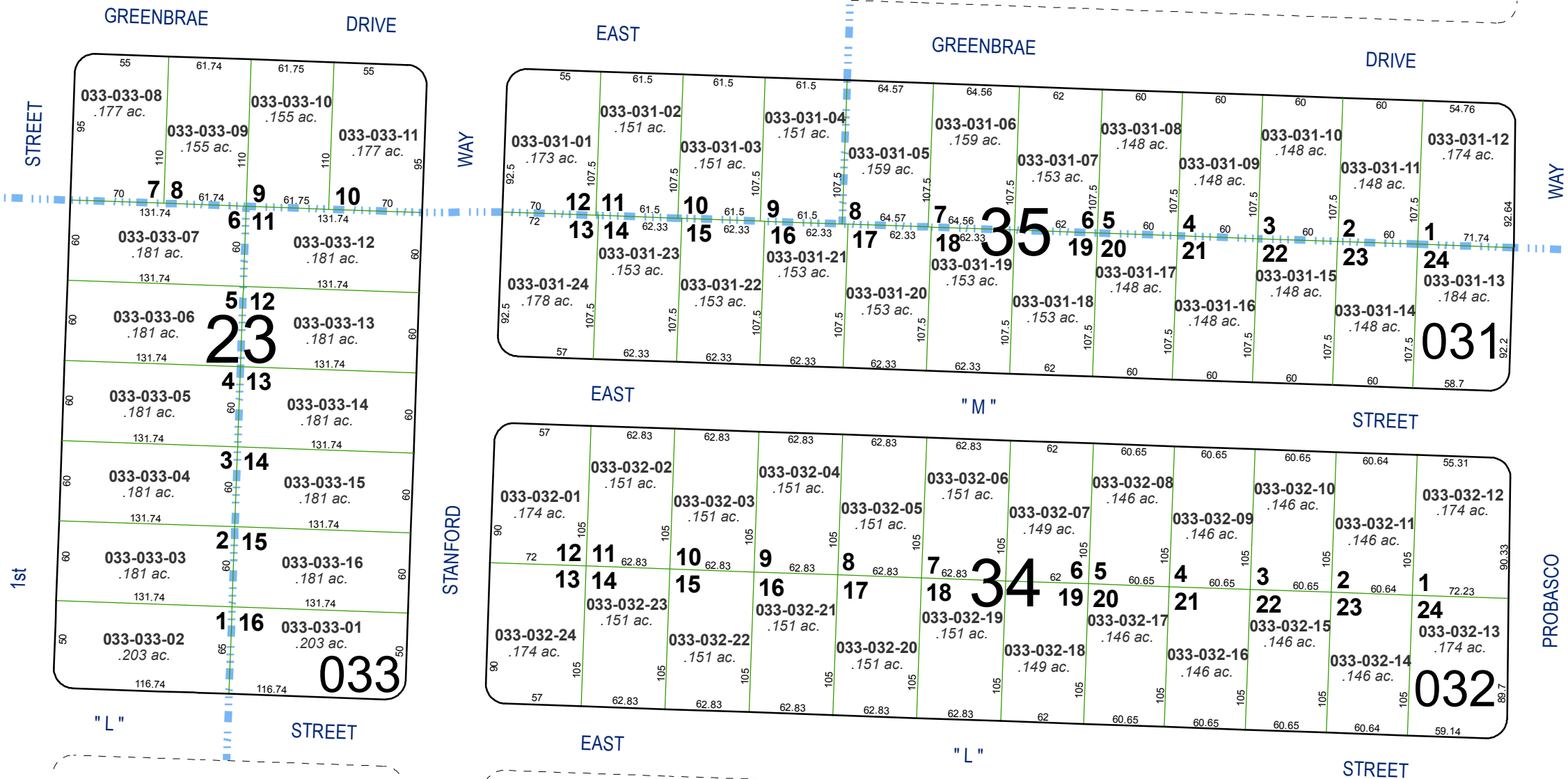


(#506)
GREENBRAE TERRACE SUB.
ADDITION NO. 8
 A POR. OF THE N ½ OF SEC. 4
 T19N - R20E

(#516)
ADDITION NO. 9

(#484)
ADDITION
NO. 6

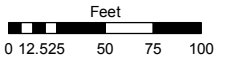
(#532)
GREENBRAE TERRACE SUB.
ADDITION NO. 10



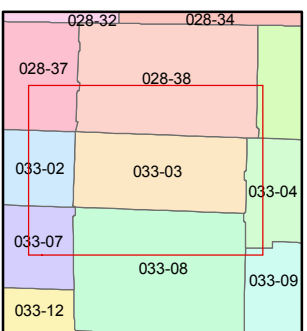
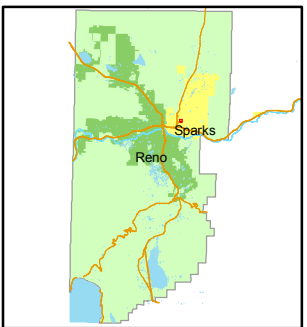
Assessor's Map Number
033-03

STATE OF NEVADA
WASHOE COUNTY
ASSESSOR'S OFFICE
 Joshua G. Wilson, Assessor

1001 East Ninth Street
 Building D
 Reno, Nevada 89512
 (775) 328-2231



1 inch = 100 feet



created by: NLH 11/01/2010

last updated: _____

area previously shown on map(s)

NOTE: This map was prepared for the use of the Washoe County Assessor for assessment and illustrative purposes only. It does not represent a survey of the premises. No liability is assumed as to the sufficiency or accuracy of the data delineated herein.