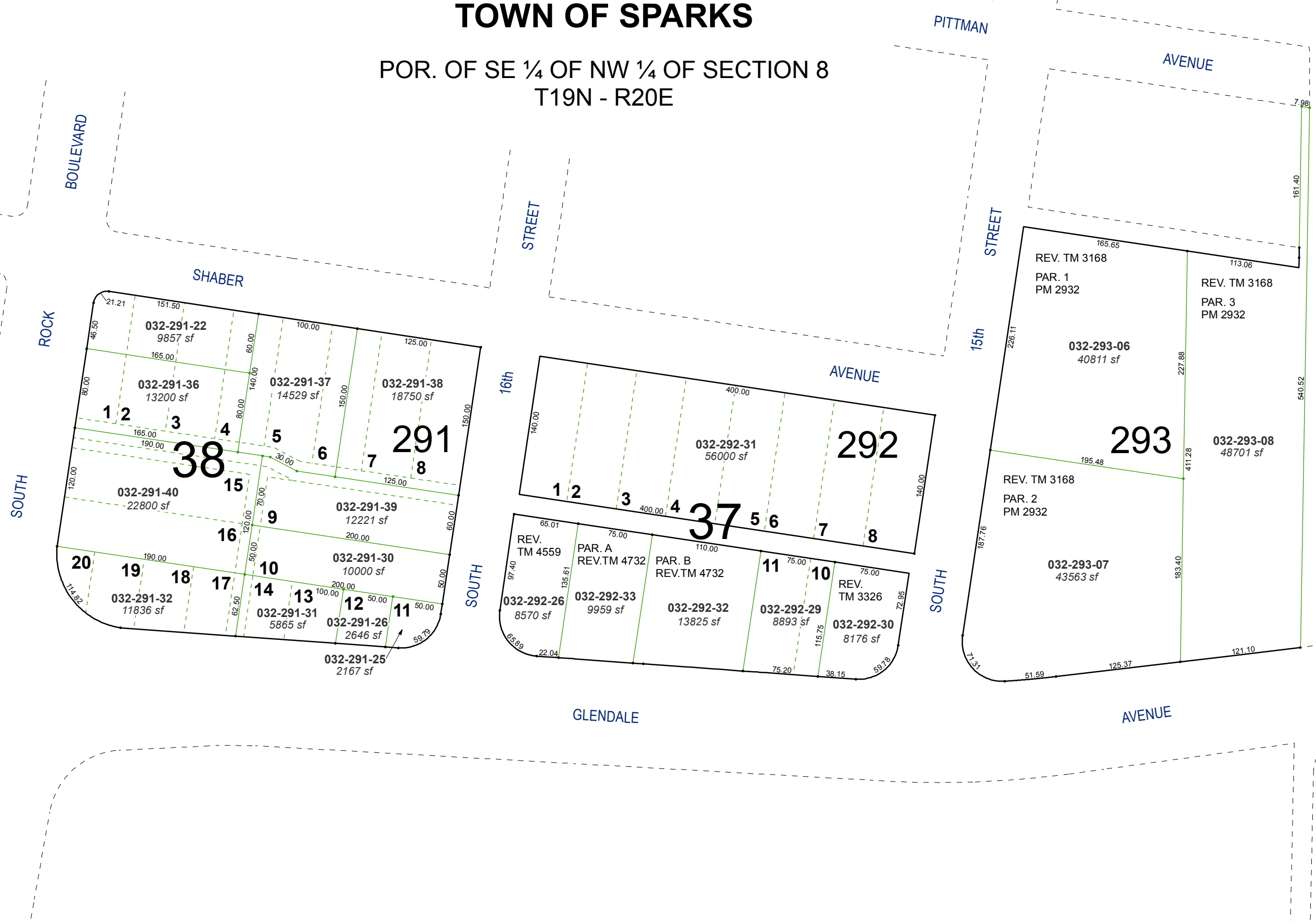


(#117) TOWN OF SPARKS

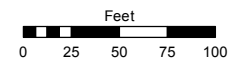
POR. OF SE ¼ OF NW ¼ OF SECTION 8
T19N - R20E



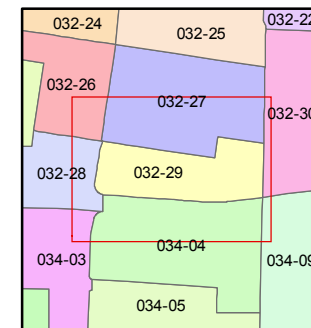
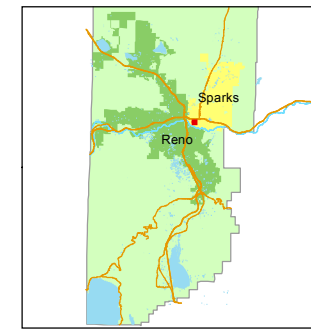
Assessor's Map Number
032-29

STATE OF NEVADA
WASHOE COUNTY
ASSESSOR'S OFFICE
Michael E. Clark, Assessor

1001 East Ninth Street
Building D
Reno, Nevada 89512
(775) 328-2231



1 inch = 100 feet



created by: NLH 10/20/2010

last updated: KSB 4/10/17

area previously shown on map(s)

NOTE: This map was prepared for the use of the Washoe County Assessor for assessment and illustrative purposes only. It does not represent a survey of the premises. No liability is assumed as to the sufficiency or accuracy of the data delineated hereon.