

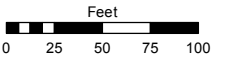
(#106)
ROBISON'S ADDITION
 A POR. OF THE SE ¼ OF SEC. 5
 T19N - R20E

Assessor's Map Number

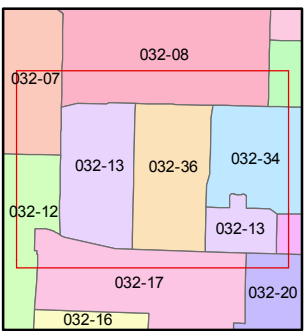
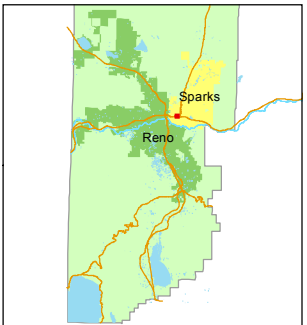
032-13

STATE OF NEVADA
WASHOE COUNTY
ASSESSOR'S OFFICE
 Michael E. Clark, Assessor

1001 East Ninth Street
 Building D
 Reno, Nevada 89512
 (775) 328-2231



1 inch = 100 feet

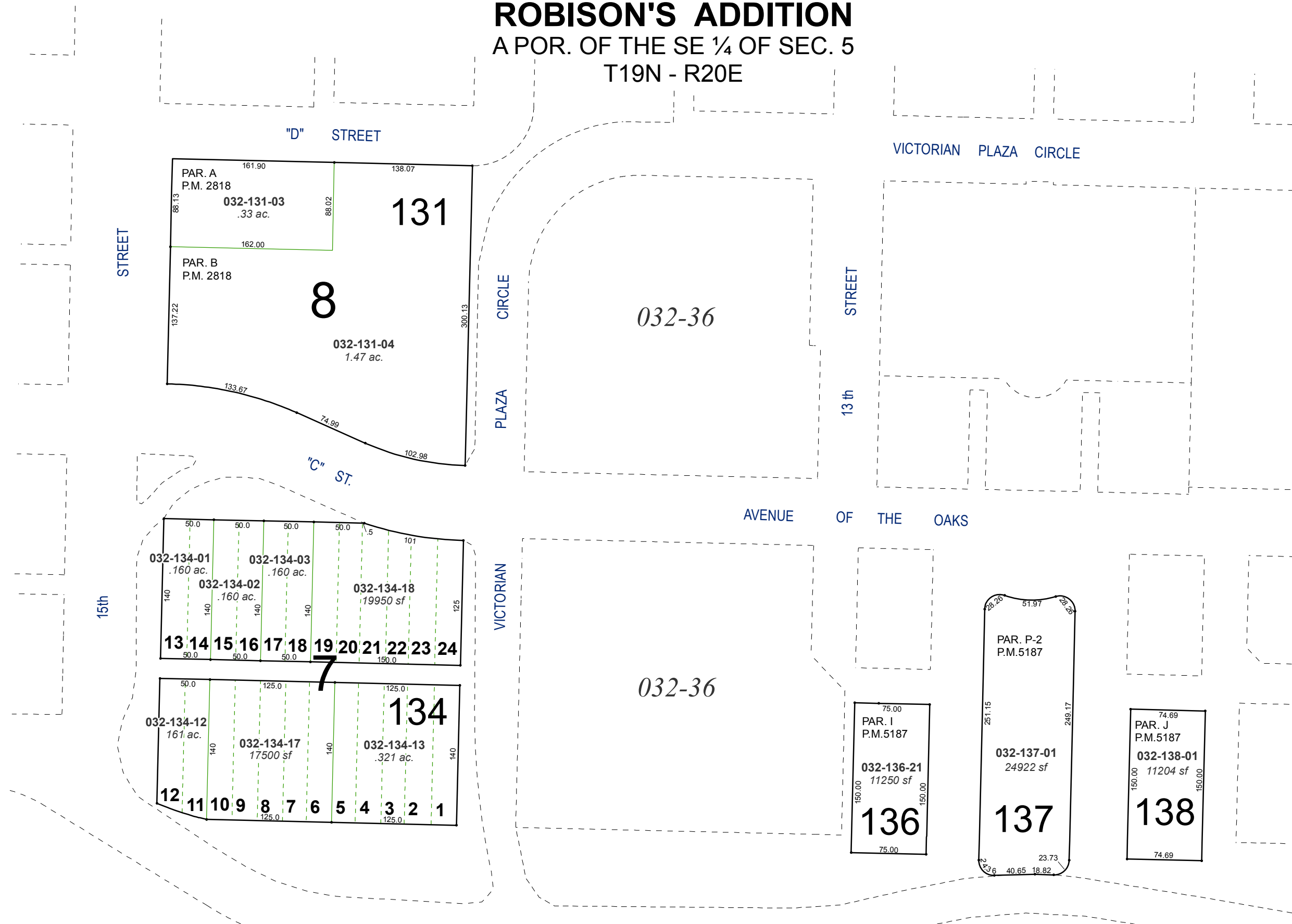


created by: NLH 5/12/2010

last updated: CFB 11/25/15 KSB 12/29/15

area previously shown on map(s)

NOTE: This map was prepared for the use of the Washoe County Assessor for assessment and illustrative purposes only. It does not represent a survey of the premises. No liability is assumed as to the sufficiency or accuracy of the data delineated hereon.



STREET

"D" STREET

VICTORIAN PLAZA CIRCLE

CIRCLE
PLAZA

STREET
13 th

"C" ST.

AVENUE OF THE OAKS

VICTORIAN

15th

VICTORIAN

AVENUE

PAR. A
P.M. 2818
032-131-03
.33 ac.

PAR. B
P.M. 2818

131

8

032-131-04
1.47 ac.

032-134-01 .160 ac.

032-134-02 .160 ac.

032-134-03 .160 ac.

032-134-18 19950 sf

13 14 15 16 17 18 19 20 21 22 23 24

032-134-12 161 ac.

032-134-17 17500 sf

032-134-13 .321 ac.

134

12 11 10 9 8 7 6 5 4 3 2 1

PAR. I
P.M.5187

032-136-21
11250 sf

136

PAR. P-2
P.M.5187

032-137-01
24922 sf

137

PAR. J
P.M.5187

032-138-01
11204 sf

138