

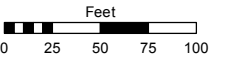
(#597)
ROSASCO SUBDIVISION
 A POR. OF THE SE 1/4 OF SEC. 6
 T19N - R20E

Assessor's Map Number

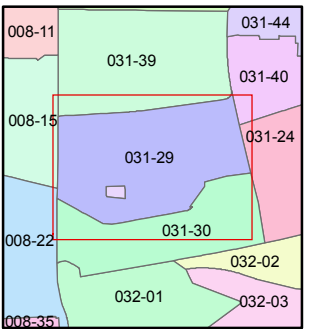
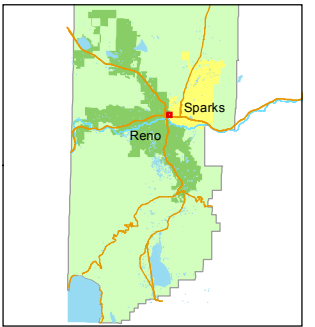
031-29

STATE OF NEVADA
WASHOE COUNTY
ASSESSOR'S OFFICE
 Joshua G. Wilson, Assessor

1001 East Ninth Street
 Building D
 Reno, Nevada 89512
 (775) 328-2231



1 inch = 100 feet

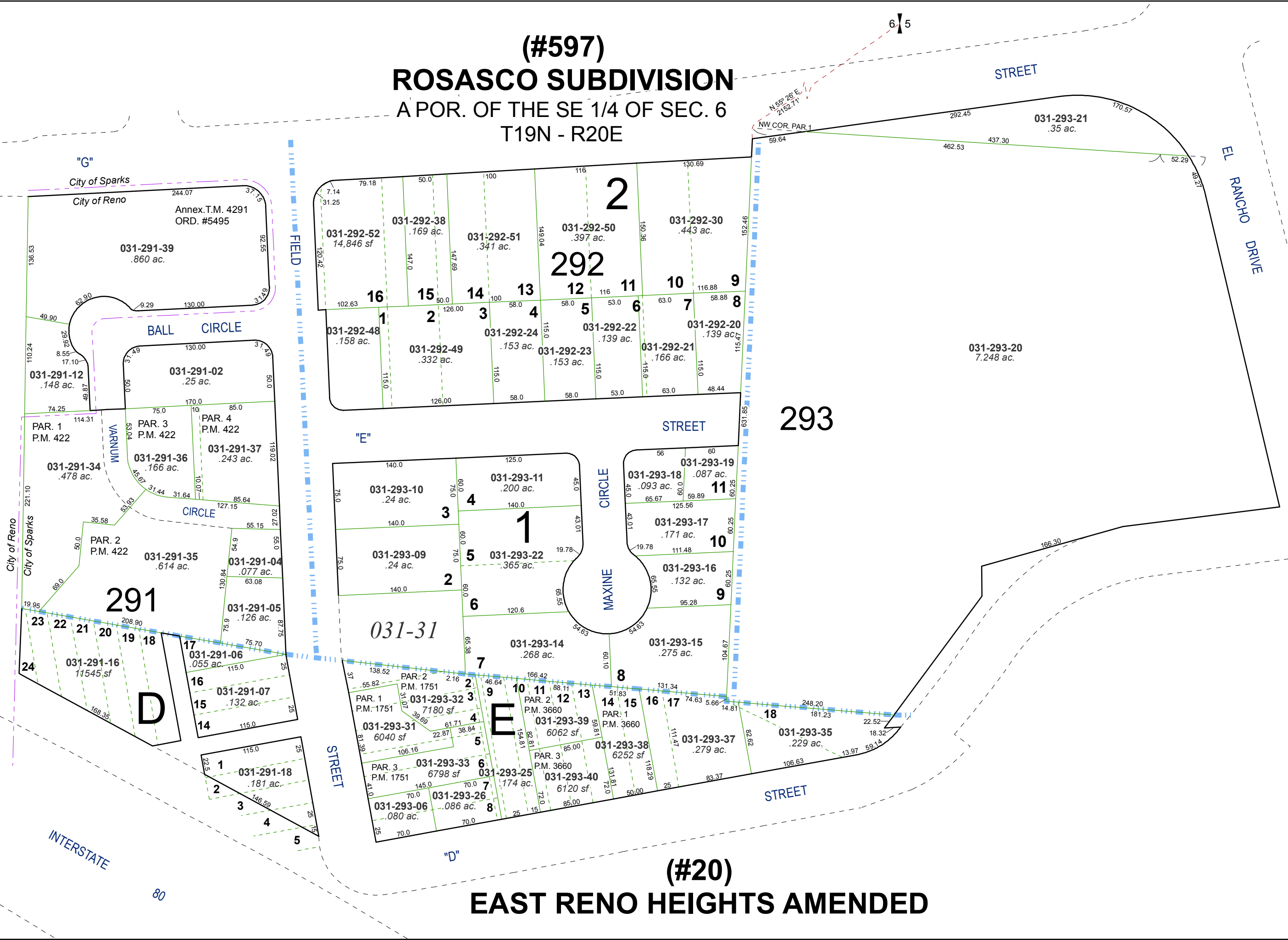


created by: NLH 4/12/2010

last updated: CFB 06/06/2012

area previously shown on map(s)

NOTE: This map was prepared for the use of the Washoe County Assessor for assessment and illustrative purposes only. It does not represent a survey of the premises. No liability is assumed as to the sufficiency or accuracy of the data delineated hereon.



(#20)
EAST RENO HEIGHTS AMENDED